

Disclosures

The views of John Blank, PhD are not necessarily the views of Zacks Investment Research. Past performance is no guarantee of future results. Inherent in any investment is the potential for loss. This material is being provided for informational purposes only and nothing herein constitutes investment, legal, accounting or tax advice, or a recommendation to buy, sell or hold a security. No recommendation or advice is being given as to whether any investment is suitable for a particular investor. It should not be assumed that any investments in securities, companies, sectors or markets identified and described were or will be profitable. All information is current as of the date herein and is subject to change without notice. Any views or opinions expressed may not reflect those of the firm as a whole. Zacks Investment Research is not a licensed securities dealer, broker or US investment adviser or investment bank.

What are the Best Consumer Staples ETFs?

Part One: [Top Stocks in Top 10 Consumer Staples ETFs](#)

Part Two: [Returns on the Largest Consumer Staples ETFs](#)

Part Three: [Consumer Staples ETF Valuation Metrics](#)

Presented by:

John Blank, PhD

Zacks Chief Equity Strategist and Economist

10/23/2023



Part One: Top Stocks in Top 10 Consumer Staples ETFs

What broad current conditions should traders and investors be made aware of?

Top Stocks in Various Consumer Staples Industries Using Market Capitalization

Match the company names with their tickers

Fomento Economico Mexicano SAB de CV, alias FEMSA, is headquartered in Monterrey, Mexico. (Ticker FMX)

Its core businesses include retail, Coca-Cola FEMSA and Digital@FEMSA. It participates in the beverage industry through Coca-Cola FEMSA, which is the world's largest franchise bottler for Coca-Cola products.

Kenvue Inc. (KVUE) is a pure-play consumer health company.

Its brand portfolio includes AVEENO(R), BAND-AID(R) Brand Adhesive Bandages, JOHNSON'S(R), LISTERINE(R), NEUTROGENA(R), TYLENOL(R) and ZYRTEC(R).

Kenvue Inc. is based in SKILLMAN, N.J.

Some of the Top Stocks by Market Capitalisation			Market Capitalisation as on		
Tickers	Company Name	Industry Name	09/20/23	10/06/23	% Change
NKE	Nike Inc-B	Apparel	137958	148576	7.7
LULU	Lululemon Athlt	Apparel	48369	46661	-3.5
KO	Coca Cola Co	Beverages	244455	229796	-6.0
PEP	Pepsico Inc	Beverages	237488	220652	-7.1
FMX	Fomento Eco-Adr	Beverages	191318	N/A	N/A
BUD	Anheuser-Bu Adr	Beverages	94260	91724	-2.7
DEO	Diageo Plc-Adr	Beverages	84607	85208	0.7
MDLZ	Mondelez Intl	Food	96005	86196	-10.2
KHC	Kraft Heinz	Food	42376	39342	-7.2
HSY	Hershey Co/The	Food	41957	39879	-5.0
ADM	Archer Daniels	Food	40781	39060	-4.2
GIS	Genl Mills	Food	37911	36324	-4.2
CTVA	Corteva Inc	Food	36049	35524	-1.5
SY	Sysco Corp	Food	33441	31741	-5.1
NYT	Ny Times A	Publishing	6648	6743	1.4
WLYB	Wiley (John) B	Publishing	2069	2047	-1.1
WLY	Wiley (John) A	Publishing	2027	1892	-6.7
SCHL	Scholastic Corp	Publishing	1182	1147	-3.0
PG	Procter & Gambl	Soaps-Cosmetics	351993	339664	-3.5
UL	Unilever Plc	Soaps-Cosmetics	124023	121281	-2.2
CL	Colgate Palmoli	Soaps-Cosmetics	59522	57397	-3.6
EL	Estee Lauder	Soaps-Cosmetics	49941	51958	4.0
PM	Philip Morris	Tobacco	141372	143080	1.2
MO	Altria Group	Tobacco	74356	74658	0.4
BTI	British Am Tob	Tobacco	64607	61483	-4.8
KMB	Kimberly Clark	Cons Prod-MISC. STAPLES	41777	40180	-3.8
KVUE	Kenvue Inc	Cons Prod-MISC. STAPLES	39523	38432	-2.8
IFF	Intl Flvrs&Frag	Cons Prod-MISC. STAPLES	17127	16078	-6.1
ACI	Albertsons Cos	Cons Prod-MISC. STAPLES	13258	13022	-1.8
SCI	Service Corp In	Cons Prod-MISC. STAPLES	8707	8222	-5.6

Source : Zacks Investment Research

Top 10 Holdings in the Top 10 Consumer Staples ETFs

Assets Under Management -- AuM (\$M)

Top 10 Holdings in Top 10 by AuM (\$Million) of Consumer Staples ETFs

Ticker : XLP, AuM (\$Million) : 15971.7		Ticker : VDC, AuM (\$Million) : 6359.14		Ticker : IEV, AuM (\$Million) : 1614.73		Ticker : IYK, AuM (\$Million) : 1382.17		Ticker : FSTA, AuM (\$Million) : 1048.78	
Holding	Allocation %	Holding	Allocation %	Holding	Allocation %	Holding	Allocation %	Holding	Allocation %
Procter & Gamble Company	14.89%	Procter & Gamble Company	12.48%	Novo Nordisk A/S Class B3.	3.46%	Procter & Gamble Co.	16.59%	Procter & Gamble Co.	12.82%
Costco Wholesale Corporation	10.97%	Costco Wholesale Corporation	8.77%	Nestle S.A.	3.25%	PepsiCo, Inc.	10.70%	Costco Wholesale Corporation	9.12%
Walmart Inc.	9.95%	Walmart Inc.	8.27%	ASML Holding NV	2.60%	Coca-Cola Company	10.21%	Walmart Inc.	8.55%
PepsiCo, Inc.	9.59%	PepsiCo, Inc.	8.18%	Shell Plc	2.40%	Philip Morris International Inc.	7.10%	PepsiCo, Inc.	7.98%
Philip Morris International Inc.	4.73%	Coca-Cola Company	8.08%	AstraZeneca PLC	2.22%	CVS Health Corporation	4.61%	Coca-Cola Company	7.91%
Coca-Cola Company	4.36%	Philip Morris International Inc.	4.60%	Novartis AG	2.15%	Mondelez International, Inc.	4.30%	Philip Morris International Inc.	4.74%
Mondelez International, Inc. Cl A	4.25%	Mondelez International, Inc. Cl A	3.80%	Roche Holding Ltd Dividend Right Cert.	2.10%	Altria Group, Inc.	3.87%	Mondelez International, Inc. Cl A	3.52%
Altria Group, Inc.	3.80%	Altria Group, Inc.	3.03%	LVMH Moet Hennessy Louis Vuitton SE	1.96%	McKesson Corporation	3.16%	Altria Group, Inc.	3.17%
Colgate-Palmolive Company	2.98%	Colgate-Palmolive Company	2.29%	HSBC Holdings Plc	1.70%	Colgate-Palmolive Co.	3.02%	Colgate-Palmolive Company	2.38%
Target Corporation	2.56%	Constellation Brands, Inc.	1.73%	TotalEnergies SE	1.65%	Kimberly-Clark Corporation	2.10%	Target Corporation	1.78%
Ticker : KXI, AuM (\$Million) : 885.22		Ticker : FXG, AuM (\$Million) : 553.63		Ticker : RSPS, AuM (\$Million) : 545.14		Ticker : PBJ, AuM (\$Million) : 189.16		Ticker : FTXG, AuM (\$Million) : 103.18	
Holding	Allocation %	Holding	Allocation %	Holding	Allocation %	Holding	Allocation %	Holding	Allocation %
Procter & Gamble Company	8.97%	McKesson Corporation	4.49%	Costco Wholesale Corporation	2.96%	Chipotle Mexican Grill, Inc.	5.19%	Kraft Heinz Company	8.39%
Nestle S.A.	7.94%	Celsius Holdings, Inc.	4.35%	Walgreens Boots Alliance, Inc.	2.96%	Kraft Heinz Company	5.03%	Archer-Daniels-Midland Co.	8.36%
Costco Wholesale Corporation	6.33%	Casey's General Stores, Inc.	4.33%	Philip Morris International Inc.	2.84%	Archer-Daniels-Midland Co.	4.94%	Coca-Cola Company	7.96%
Walmart Inc.	4.69%	Archer-Daniels-Midland Co.	4.27%	Dollar Tree, Inc.	2.83%	Constellation Brands, Inc. Cl A	4.91%	PepsiCo, Inc.	7.94%
PepsiCo, Inc.	4.33%	Bunge Limited	4.16%	Walmart Inc.	2.80%	PepsiCo, Inc.	4.85%	Mondelez International, Inc. Cl A	7.86%
Coca-Cola Company	4.27%	Performance Food Group Co	4.08%	Colgate-Palmolive Company	2.80%	Mondelez International, Inc. Cl A	4.81%	US Foods Holding Corp.	4.13%
Philip Morris International Inc.	4.03%	Ingredion Incorporated	4.08%	Altria Group, Inc.	2.79%	Coca-Cola Company	4.78%	Molson Coors Beverage Co.	4.10%
Unilever PLC	3.37%	Darling Ingredients Inc	3.90%	Procter & Gamble Company	2.72%	Monster Beverage Corporation	4.61%	General Mills, Inc.	4.10%
L'Oreal S.A.	2.63%	Cencora, Inc.	3.57%	Kraft Heinz Company	2.72%	Sprouts Farmers Market, Inc.	3.23%	Constellation Brands, Inc.	4.02%
Mondelez International, Inc. Cl A	2.37%	Albertsons Companies, Inc.	3.41%	Kimberly-Clark Corporation	2.72%	BellRing Brands, Inc.	3.23%	Hershey Company	3.91%

*Note : Allocation % as on 10/16/23.

Source : www.etf.com

Miscellaneous Data Points for Consumer Staples ETFs

<https://institutional.vanguard.com/iippdf/pdfs/FS955R.pdf>

Ticker, Name, Industry, Sponsor, Benchmark, Inception Date, Expense Ratio (%)

Miscellaneous Data Points for Consumer Staples ETFs

ETF Ticker	Name of the ETF	Industry	Sponsor	Benchmark	Inception Date	Expense Ratio in %
XLP	SPDR - CONSUMER STAPLES	Broad Consumer Staples	STATE STREET GLOBAL ADVISORS	CONSUMER STAPLES SELECT SECTOR INDEX	19981216	0.10
VDC	VIPERS - CONSUMER STAPLES	Broad Consumer Staples	VANGUARD	MSCI US INVESTABLE MKT CONS STP 25/50 ID	20040126	0.10
IEV	ISHARES - EUROPE	Broad Consumer Staples	BLACKROCK	S&P EUROPE 350 INDEX	20000725	0.67
IYK	ISHARES - US CONSUMER STAPLES	Consumer Goods	BLACKROCK	RUSSELL 1000 CONS STPL RIC 22.5/45 CP ID	20000612	0.40
KXI	ISHARES - GLOBAL CONSUMER STAPLES	Broad Consumer Staples	BLACKROCK	S&P GLBL 1200 CONSMR STAPLES SCTR CAP ID	20060912	0.41
FSTA	Fidelity MSCI Consumer Staples Index ETF	Broad Consumer Staples	FIDELITY	MSCI USA IMI CONSUMER STAPLES INDEX	20131021	0.08
FXG	First Trust Consumer Staples AlphaDEX Fund	Broad Consumer Staples	FIRST TRUST ADVISORS	STRATAQUANT CONSUMER STAPLES INDEX	20070508	0.63
RSPS	Invesco S&P 500 Equal Weight Consumer Staples ETF	Broad Consumer Staples	INVESCO	S&P 500 EQL WEIGHT CONSUMER STAPLES INDX	20061101	0.40
PBJ	Invesco Food & Beverage ETF	Food & Beverage	INVESCO	DYNAMIC FOOD & BEVERAGE INTELLIDEX INDEX	20050623	0.63
FTXG	First Trust Nasdaq Food & Beverage ETF	Food & Beverage	FIRST TRUST ADVISORS	NASDAQ US SMART FOOD & BEVERAGE INDEX	20160920	0.60
PSL	Invesco Dorsey Wright Consumer Staples Momentum ETF	Broad Consumer Staples	INVESCO	DORSEY WRIGHT CNS STPL TECHNICAL LDRS ID	20061012	0.60
PSCC	Invesco S&P SmallCap Consumer Staples ETF	Broad Consumer Staples	INVESCO	S&P SMALLCAP 600 CAPPED CONS STAP INDEX	20100407	0.29
ECON	Columbia Emerging Markets Consumer ETF	Broad Consumer Staples	COLUMBIA THREADNEEDLE	DOW JONES EM CONSUMER TITANS INDEX	20100914	0.49
WBIL	WBI BullBear Quality 3000 ETF	Broad Consumer Staples	WBI SHARES		20140827	1.25
CLIX	ProShares Long Online/Short Stores ETF	Broad Consumer Staples	PROSHARES	PROSHARES LONG ONLINE/SHORT STORES INDEX	20171114	0.65
CHIS	Global X MSCI China Consumer Staples ETF	Broad Consumer Staples	GLOBAL X MANAGEMENT	MSCI CHINA CONSUMER STAPLES 10/50 INDEX	20181207	0.65
UGE	ProShares Ultra Consumer Staples	Consumer Goods	PROSHARES	S&P CONSUMER STAPLES SELECT SECTOR INDEX	20070130	0.95
EATV	VegTech Plant-based Innovation & Climate ETF	Food & Beverage	VEGTECH INVEST		20211228	0.75
YUMY	VE - FUTURE FOOD	Food & Beverage	VAN ECK		20211130	0.69
EATZ	AdvisorShares Restaurant ETF	Food & Beverage	ADVISORSHARES		20210420	0.99
SZK	ProShares UltraShort Consumer Staples	Consumer Goods	PROSHARES	S&P CONSUMER STAPLES SELECT SECTOR INDEX	20070130	0.95

Source : www.etfdb.com

Part Two: Returns on the Largest Consumer Staples ETFs

What broad current conditions should traders and investors be made aware of?

Change in Weekly AuM (\$M) for Consumer Staples ETFs

09/28/23 to 10/20/23

Change in Weekly AuM (\$Million) Tables for the Consumer Staples ETFs

Sponsors' Weekly % change in AuM (\$Million) for Consumer Staples ETFs

Sponsors/Issuers	09/28/23	10/09/23	10/16/23	10/20/23	% Change over the Week 092823 -100923	% Change over the Week 100923 - 101623	% Change over the Week 101623 - 102023
STATE STREET GLOBAL ADVISORS	16641.7	16214.0	15971.7	18238.1	-2.6	-1.5	14.2
VANGUARD	6739.3	6453.8	6359.1	7250.5	-4.2	-1.5	14.0
BLACKROCK	4500.5	4022.7	4045.7	5048.4	-10.6	0.6	24.8
FIDELITY	1100.9	885.5	885.2	1239.3	-19.6	0.0	40.0
FIRST TRUST ADVISORS	806.0	688.0	656.8	1695.5	-14.6	-4.5	158.1
INVESCO	971.8	923.5	897.1	1216.4	-5.0	-2.9	35.6
COLUMBIA THREADNEEDLE	66.5	64.1	65.2	73.3	-3.6	1.8	12.4
WBI SHARES	41.6	40.6	41.7	46.0	-2.2	2.7	10.3
PROSHARES	30.6	30.2	29.6	29.2	-1.1	-2.0	-1.4
GLOBAL X MANAGEMENT	9.8	9.5	9.5	36.6	-3.2	0.5	285.2
VEGTECH INVEST	5.1	5.0	4.6	5.3	-2.7	-7.4	14.1
VAN ECK	3.2	3.1	3.1	3.5	-3.8	1.0	14.6
ADVISORSHARES	2.4	2.3	2.3	2.7	-2.1	-0.4	15.6
Sum of AuM	30919.2	29342.3	28971.8	34884.9			

Weekly % change in AuM (\$Million) for Consumer Staples Industries

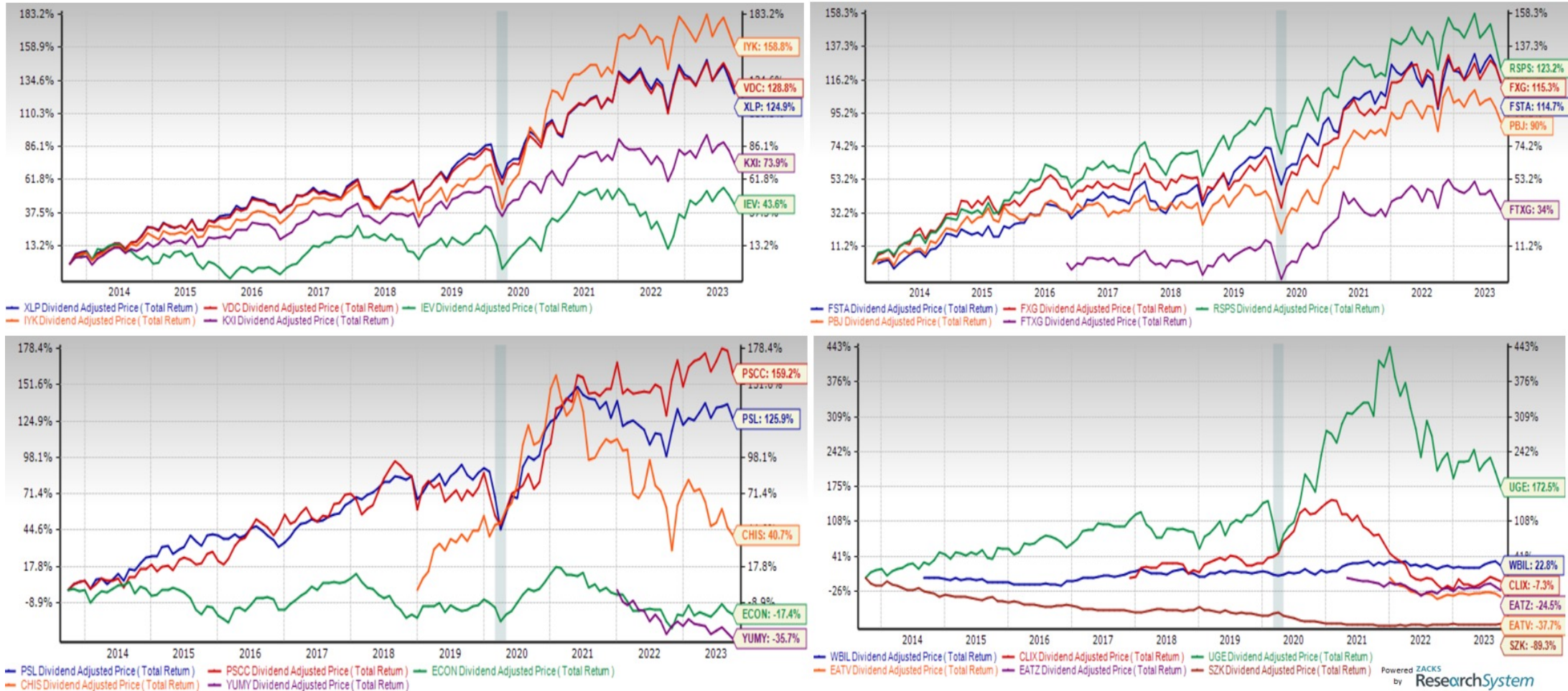
Consumer Staples Industries	09/28/23	10/09/23	10/16/23	10/20/23	% Change over the Week 092823 - 100923	% Change over the Week 100923 - 101623	% Change over the Week 101623 - 102023
Broad Consumer Staples	29037.3	27606.9	27280.3	31777.0	-4.9	-1.2	16.5
Consumer Goods	1493.3	1403.1	1388.7	1784.0	-6.0	-1.0	28.5
Food & Beverage	388.6	332.3	302.8	1323.8	-14.5	-8.9	337.2
Sum of AuM	30919.2	29342.3	28971.8	34884.9			

Source : www.etfdb.com

Total Return Charts for Consumer Staples ETFs

Over 10 years....

Total Return Charts for Consumer Staples ETFs over 10 Years



Return Analysis Table for Top Consumer Staples ETFs

From 09/30/13 to 08/31/23

Return Analysis table for Top Consumer Staples ETFs from 09/30/13 to 08/31/23

ETF Tickers	From 09/30/13 to 08/31/23				From 09/30/22 to 08/31/23				From 09/30/19 to 08/31/22				From 09/30/16 to 08/31/19				From 09/30/13 to 08/31/16			
	Cumulative Rtns.	Max	Min	Std., Dev	Cumulative Rtns.	Max	Min	Std., Dev	Cumulative Rtns.	Max	Min	Std., Dev	Cumulative Rtns.	Max	Min	Std., Dev	Cumulative Rtns.	Max	Min	Std., Dev
XLP	124.9	10.4	-8.9	3.7	5.8	9.0	-6.2	4.5	17.5	10.4	-8.2	4.3	25.4	5.6	-8.9	3.3	44.3	6.4	-6.0	3.0
VDC	128.8	9.9	-9.0	3.6	9.0	9.4	-5.4	4.5	18.1	9.9	-8.4	4.2	23.8	5.6	-9.0	3.3	43.6	6.0	-5.6	2.9
IEV	43.6	16.3	-15.4	4.7	29.7	13.5	-5.2	5.7	-5.3	16.3	-15.4	5.9	20.0	6.4	-7.7	3.5	-2.6	7.2	-7.1	3.6
IYK	158.8	12.8	-11.9	4.1	6.5	9.8	-5.9	4.5	50.3	12.8	-11.9	5.3	19.1	7.5	-9.1	3.4	35.9	6.7	-5.5	2.9
KXI	73.9	8.7	-8.8	3.5	8.6	8.3	-6.9	4.5	4.7	8.7	-8.8	4.1	18.8	5.6	-7.3	3.1	28.7	6.0	-6.5	2.9
FSTA					8.6	9.4	-5.3	4.4	18.2	9.8	-8.3	4.2	24.2	5.7	-9.1	3.3				
FXG	115.4	11.3	-9.9	3.9	8.0	11.3	-4.3	4.5	23.2	11.2	-9.2	4.6	9.4	6.7	-9.9	3.5	47.9	6.7	-5.3	3.3
RSPS	123.2	10.6	-9.6	3.7	0.1	9.4	-6.3	4.6	17.3	10.6	-9.0	4.3	22.3	7.1	-9.6	3.4	55.4	6.7	-5.0	3.0
PBJ	90.0	11.6	-10.0	3.8	3.3	11.6	-4.7	4.5	23.6	8.8	-8.8	4.4	10.9	6.0	-10.0	3.3	34.2	8.0	-5.4	3.2
FTXG					-0.8	10.3	-5.4	4.3	22.3	12.5	-10.7	5.1								
PSL	125.9	13.9	-14.1	4.0	13.8	9.5	-5.3	4.5	7.4	13.9	-14.1	5.3	31.2	4.0	-9.4	2.8	40.9	7.6	-5.2	3.3
PSCC	159.2	13.2	-13.3	4.7	13.5	11.8	-7.3	5.3	31.5	13.2	-9.1	5.4	18.7	10.1	-13.3	4.6	46.3	7.6	-5.9	3.7
ECON	-17.4	14.2	-11.5	4.8	6.8	14.2	-8.3	6.6	-9.7	6.5	-11.5	4.7	-9.8	11.1	-8.2	4.2	-5.0	13.7	-9.9	4.7
WBIL					5.6	5.0	-6.0	3.0	5.8	8.0	-7.6	3.6	27.6	9.9	-6.1	3.2				
CLIX					7.1	23.6	-10.3	9.9	-29.5	18.0	-17.3	7.4								
CHIS					-12.9	25.3	-19.7	10.8	18.2	16.2	-16.0	7.3								
UGE	172.5	27.0	-26.1	8.9	-10.7	11.1	-14.9	8.1	39.7	27.0	-26.1	12.5	26.0	15.9	-17.5	6.6	73.3	14.6	-11.2	6.2
EATV					5.6	8.3	-9.9	4.7												
YUMY					-5.6	8.6	-8.8	5.5												
EATZ					8.4	12.8	-8.4	6.8												
SZK	-89.3	19.5	-22.5	8.1	6.1	17.0	-11.1	9.1	-66.2	19.5	-22.5	10.8	-33.0	19.0	-14.4	6.6	-55.3	10.7	-15.0	5.3

Source : Zacks Investment Research

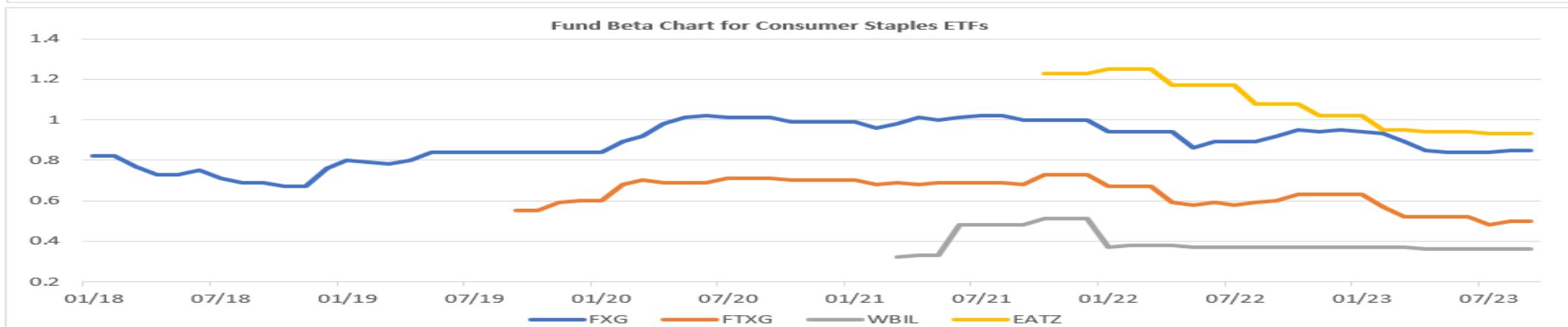
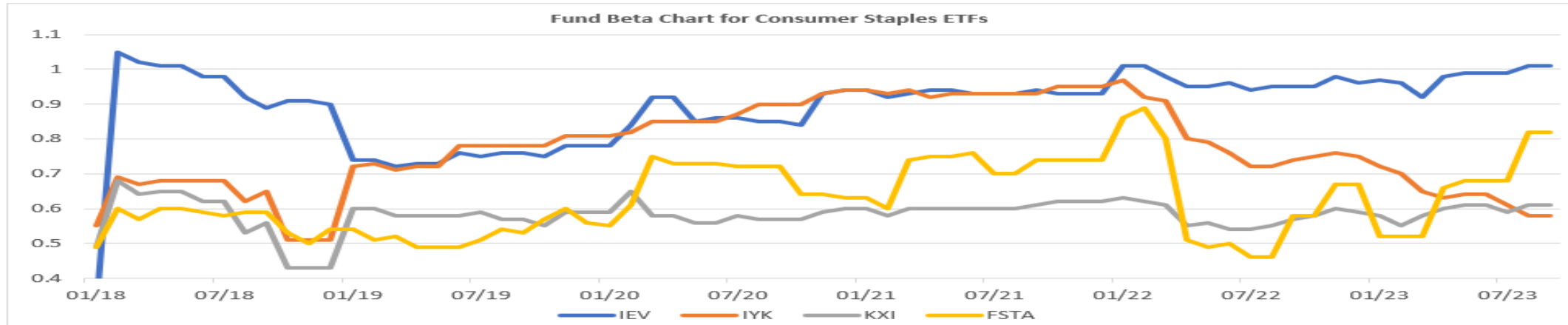
Part Three: Consumer Staples ETF Valuation Metrics

What differences should traders and investors be made aware of?

Fund Beta Charts for Consumer Staples ETFs

Over 5 Plus Years

Fund Beta Charts for Consumer Staples ETFs over 5 plus years

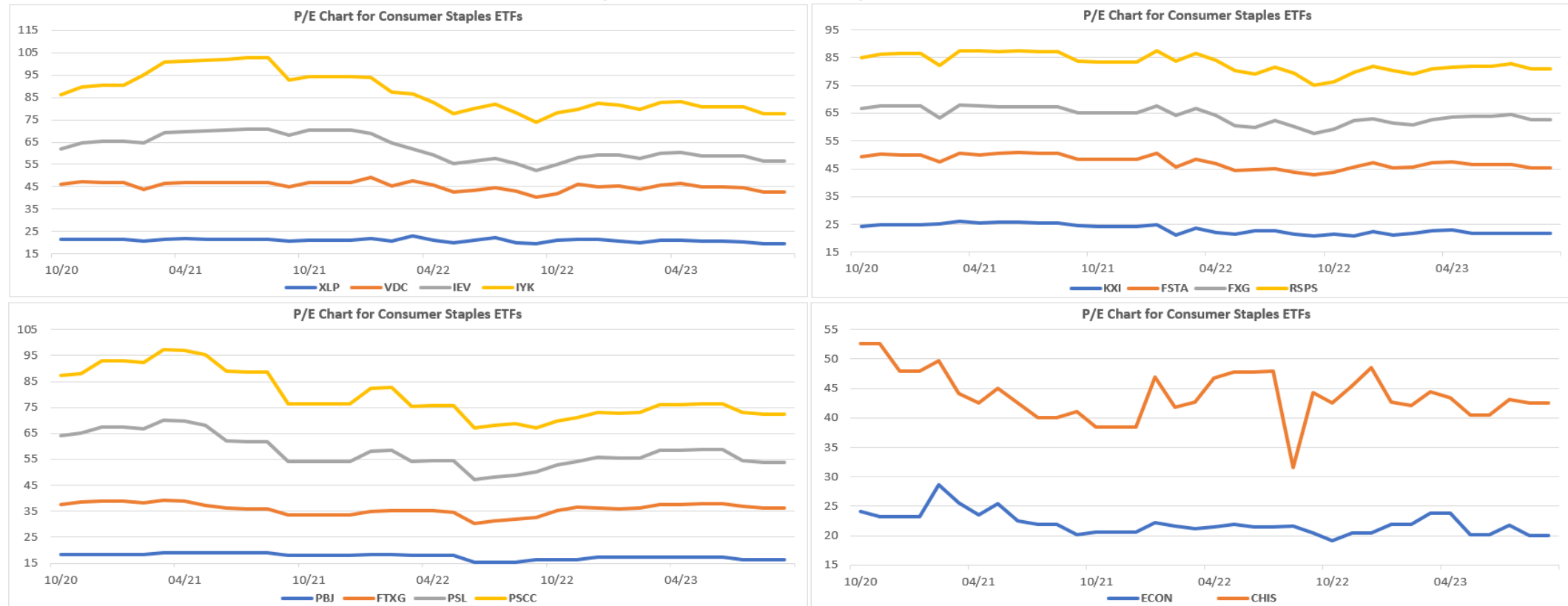


Source : Zacks Investment Research

P/E Charts for Consumer Staples ETFs

Over 5 Plus Years

P/E Charts for Consumer Staples ETFs over 5 Plus Years

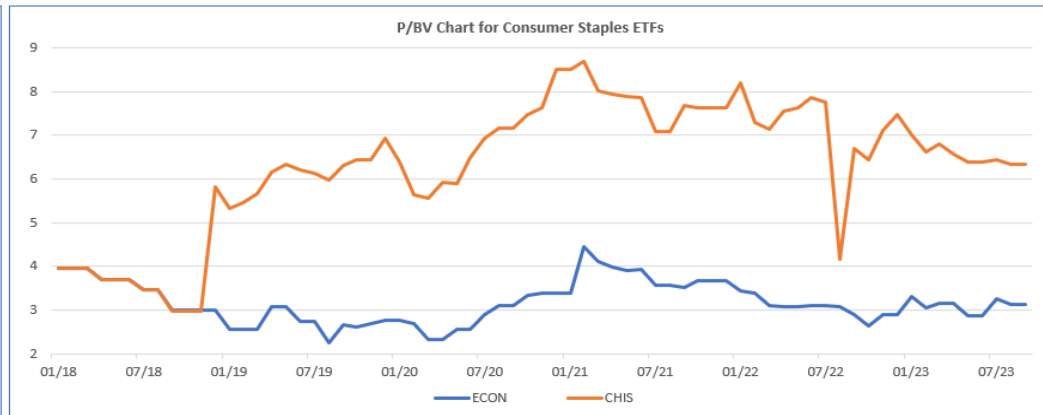
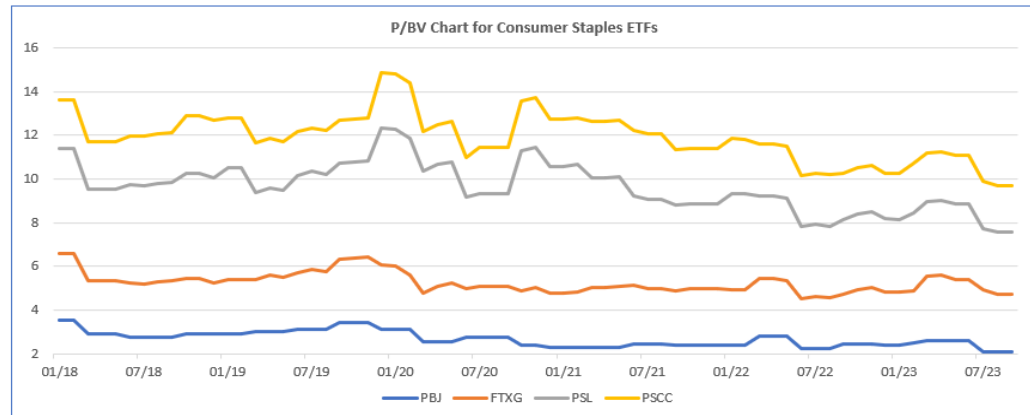
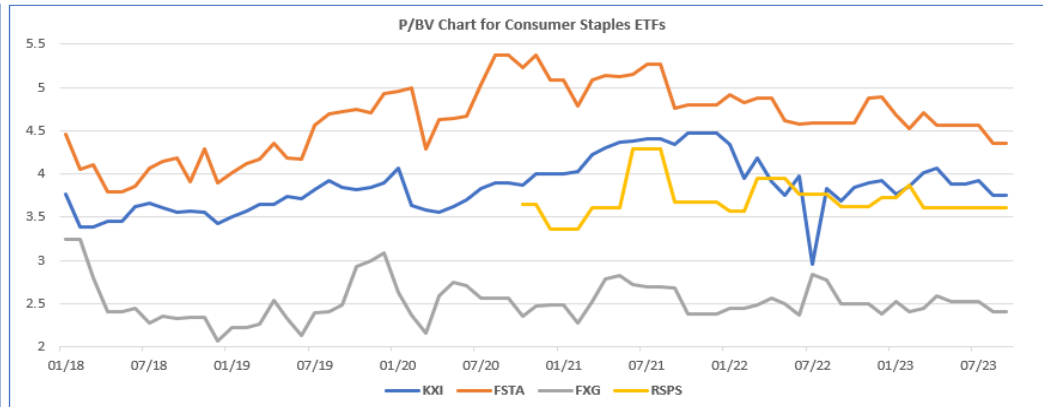
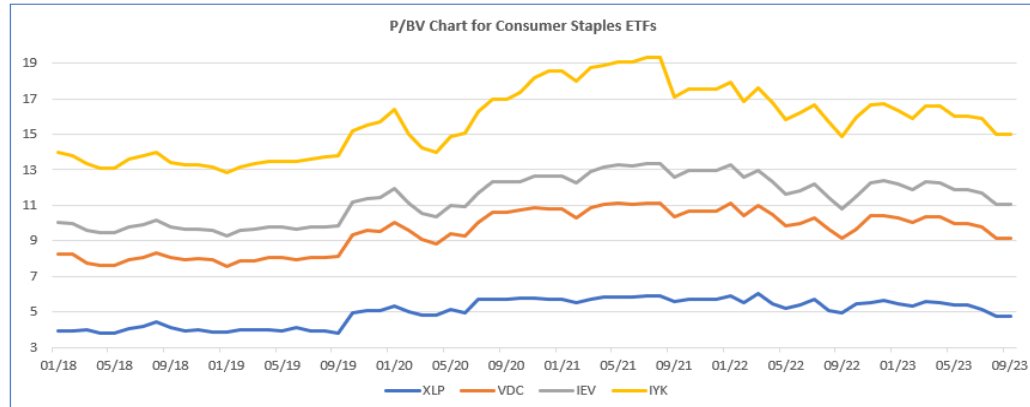


Source : Zacks Investment Research

P/BV Charts for Consumer Staples ETFs

Over 5 Plus Years

P/BV Charts for Consumer Staples ETFs over 5 Plus Years



Source : Zacks Investment Research

Thank You for Attending!

John Blank, PhD

Zacks Chief Equity Strategist and Economist

Zacks Professional Services

866-794-6065

strategycall@zackspro.com

www.zackspro.com



Zacks Professional Services



@ZATools