

Disclosures

The views of John Blank, PhD are not necessarily the views of Zacks Investment Research. Past performance is no guarantee of future results. Inherent in any investment is the potential for loss. This material is being provided for informational purposes only and nothing herein constitutes investment, legal, accounting or tax advice, or a recommendation to buy, sell or hold a security. No recommendation or advice is being given as to whether any investment is suitable for a particular investor. It should not be assumed that any investments in securities, companies, sectors or markets identified and described were or will be profitable. All information is current as of the date herein and is subject to change without notice. Any views or opinions expressed may not reflect those of the firm as a whole. Zacks Investment Research is not a licensed securities dealer, broker or US investment adviser or investment bank.

Zacks Top Finance Ideas Entering 2025

Part One: **Top Stocks by Market Capitalization**

Part Two: **Top Stocks by the Maximum Number of Analysts**

Part Three: **Top Stocks by the Largest 1 Month % Change, in Current Fiscal Year F1 EPS Estimates**

Part Four: **Top “Investment Fund” Industry Group ETFs**

Presented by:

John Blank, PhD

Zacks Chief Equity Strategist and Economist

01/27/2025



With Stock Tickers, Company Names, & Market Capitalizations

Market Cap (in \$Millions) for three remaining Finance Industry Codes (50, 51 & 52)

Tables with Tickers, Company Name, Market Cap., in \$Millions and Zacks Industry Codes

Tickers	Company Name	Market Cap ., in Mil	Industry Code	Sector : FINANCE	Industry Names	Industry Codes	Tickers	Company Name	Market Cap ., in Mil	Industry Code
JPM	Jpmorgan Chase	740519.00	50	INVEST BKRS - MGRS		50	TW	Tradeweb Markts	30216.91	50
BAC	Bank Of Amer Cp	358016.56	50	INVESTMENT FUND		51	BEN	Franklin Resour	10385.34	50
WFC	Wells Fargo-New	259200.84	50	REAL ESTATE		52	RJF	Raymond Jas Fin	34677.74	50
MS	Morgan Stanley	221195.19	50				C	Citigroup Inc	154459.59	50
GS	Goldman Sachs	199251.11	50				SCHW	Schwab(Chas)	144028.06	50
BLK	Blackrock Fin	156751.41	50				CSWC	Capital Sw Corp	1081.06	50
C	Citigroup Inc	154459.59	50				LPLA	Lpl Finl Hldgs	26237.80	50
SCHW	Schwab(Chas)	144028.06	50				MS	Morgan Stanley	221195.19	50
KKR	Kkr & Co Inc	142747.28	50				ARES	Ares Management	60958.30	50
APD	Apollo Gbl Mgt	95758.78	50				BAC	Bank Of Amer Cp	358016.56	50
SPY	Spdr-Sp 500 Tr	635543.56	51				SPY	Spdr-Sp 500 Tr	635543.56	51
IVV	Ishars-Sp500	605488.00	51				IVV	Ishars-Sp500	605488.00	51
VTI	Vipers-Tot Stk	471369.63	51				VTI	Vipers-Tot Stk	471369.63	51
QQQ	Invesco-Qqq Ts	326451.81	51				QQQ	Invesco-Qqq Ts	326451.81	51
AGG	Ishars-Cr Us Ag	120490.08	51				AGG	Ishars-Cr Us Ag	120490.08	51
IWF	Ishars-Rs 1K Gr	107070.29	51				IWF	Ishars-Rs 1K Gr	107070.29	51
IJH	Ishars-Sp Mid	100351.59	51				IJH	Ishars-Sp Mid	100351.59	51
IJR	Ishars-Sp Sc600	90899.69	51				IJR	Ishars-Sp Sc600	90899.69	51
VWO	Vangd-Ftse Em	79550.05	51				VWO	Vangd-Ftse Em	79550.05	51
GLD	Spdr-Gold Trust	77483.09	51				GLD	Spdr-Gold Trust	77483.09	51
PLD	Prologis Inc	108612.54	52				EQR	Equity Resident	26609.39	52
BN	Brookfield Corp	98486.58	52				ESS	Essex Pty Tr	18331.66	52
EQIX	Equinix Inc	90119.96	52				O	Realty Income	48364.16	52
AMT	Amer Tower Corp	88752.27	52				MAA	Mid-Amer Apt Cm	17591.65	52
WELL	Welltower Inc	83234.91	52				PSA	Public Storage	52014.28	52
DLR	Digital Rlty Tr	60889.17	52				AVB	Avalonbay Cmnty	31184.09	52
SPG	Simon Property	57411.90	52				CPT	Camden Pty Tr	12030.45	52
PSA	Public Storage	52014.28	52				DLR	Digital Rlty Tr	60889.17	52
O	Realty Income	48364.16	52				EGP	Eastgroup Pptys	8406.05	52
CBRE	Cbre Group Inc	43130.18	52				EXR	Extra Space Stg	32202.42	52

Note : List of Top Stocks by Market Capitalisation
Source : Zacks Investment Research

Note : List of Top Stocks by Largest 1 Month Change in F1 Estimate

Note : List of Top Stocks by Max., # of Analysts following these Stocks

Part One:

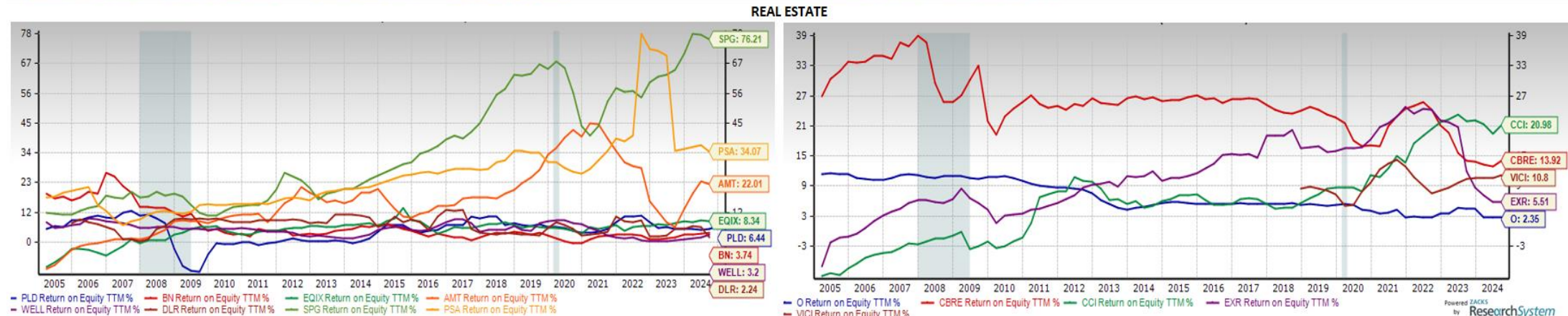
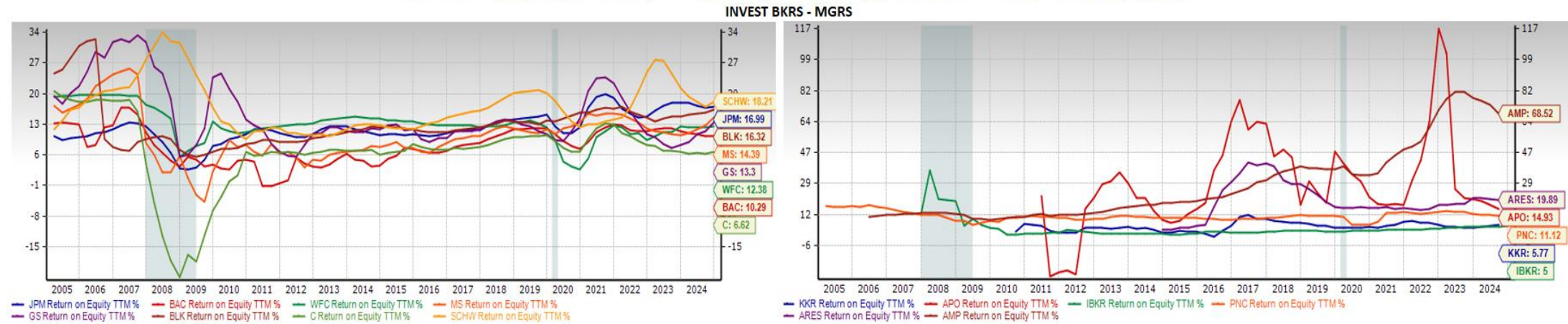
Top Stocks by Market Capitalization

What broad current conditions should traders and investors be made aware of?

Return on Equity Charts for Top 15 Stocks, by Market Capitalization

From the "Finance" Industry Groups

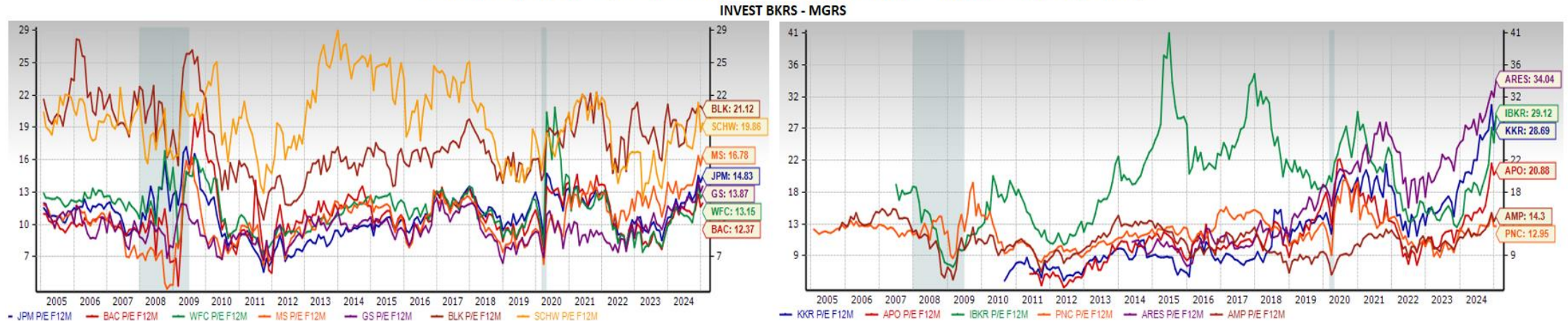
Return on Equity Charts for Top 15 Stocks by Market Cap., from the "Finance" Industry Group



P/E F12M Charts for Top 15 Stocks by Market Cap

From the "Finance" Industry Groups

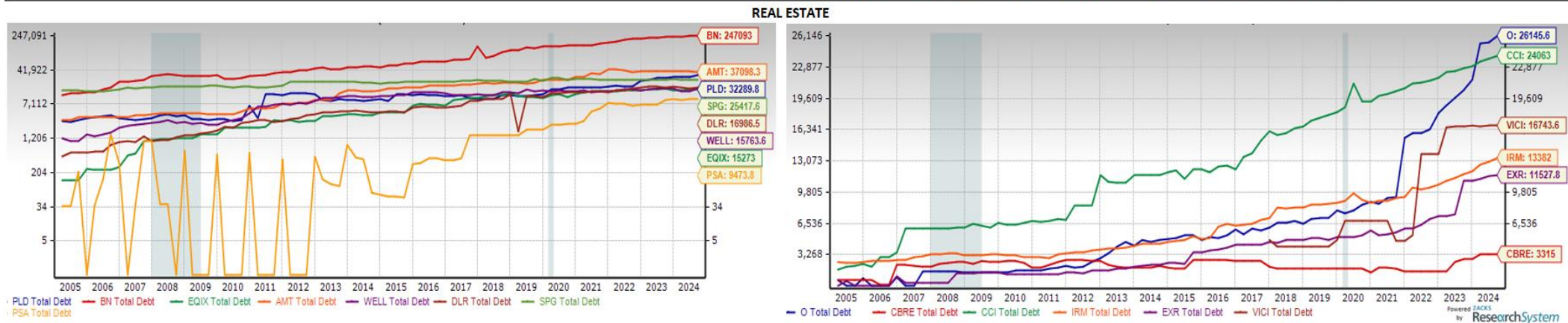
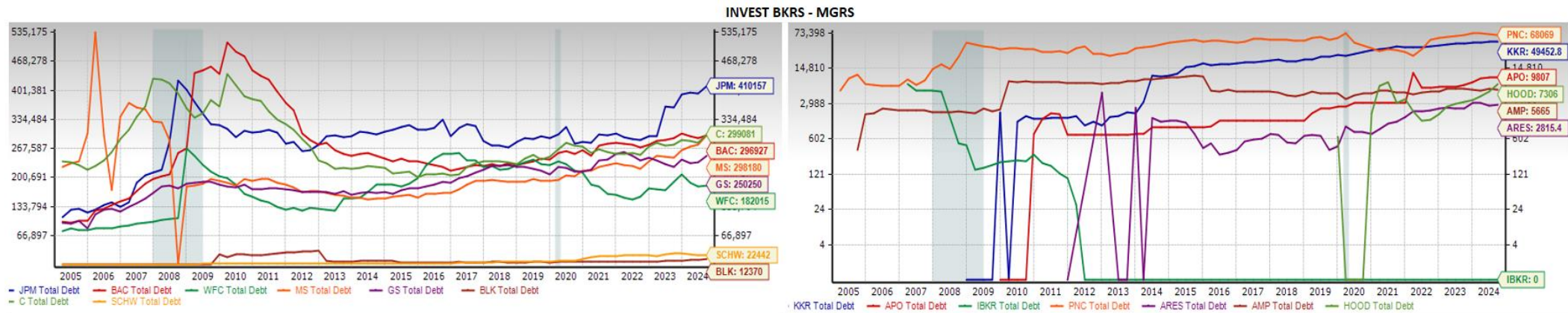
PE F12M Charts for Top 15 Stocks by Market Cap, from the "Finance" Industry Group



Total Debt Charts for Top 15 Stocks by Market Cap

From the "Finance" Industry Groups

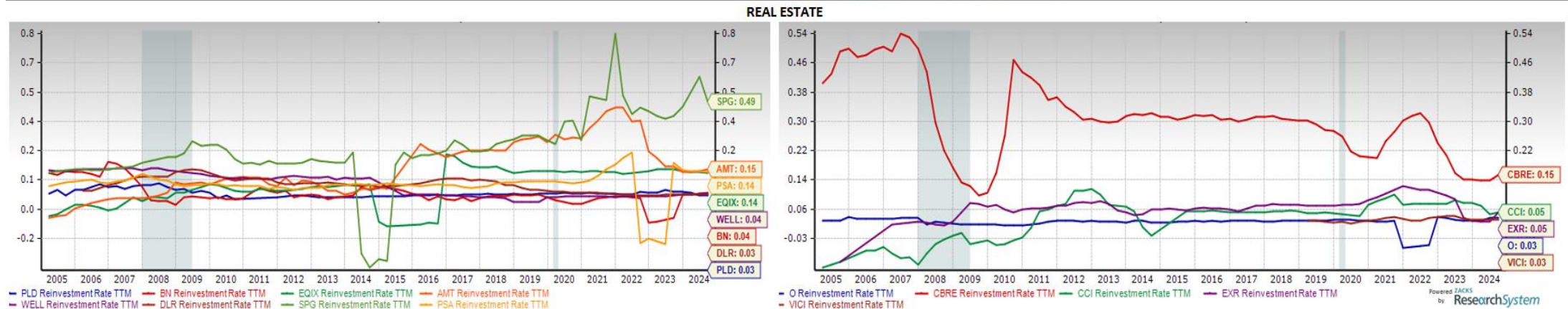
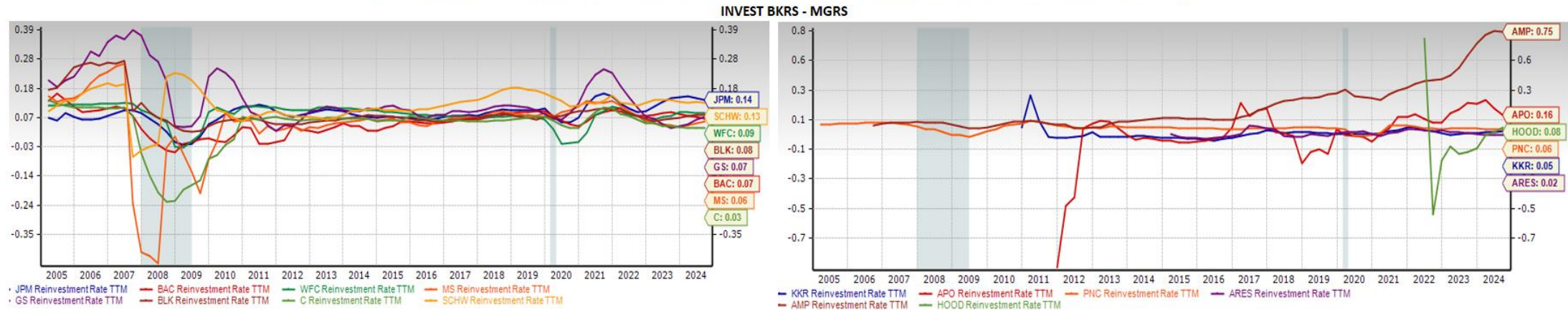
Total Debt Charts for Top 15 Stocks by Market Cap., from the "Finance" Industry Group



Reinvestment Rate for the Top 15 Stocks by Market Cap

From the Finance Industry Groups

Reinvestment Rate Charts for Top 15 Stocks by Market Cap., from the "Finance" Industry Group



Part Two:

Top Stocks by Max. Number of Analysts

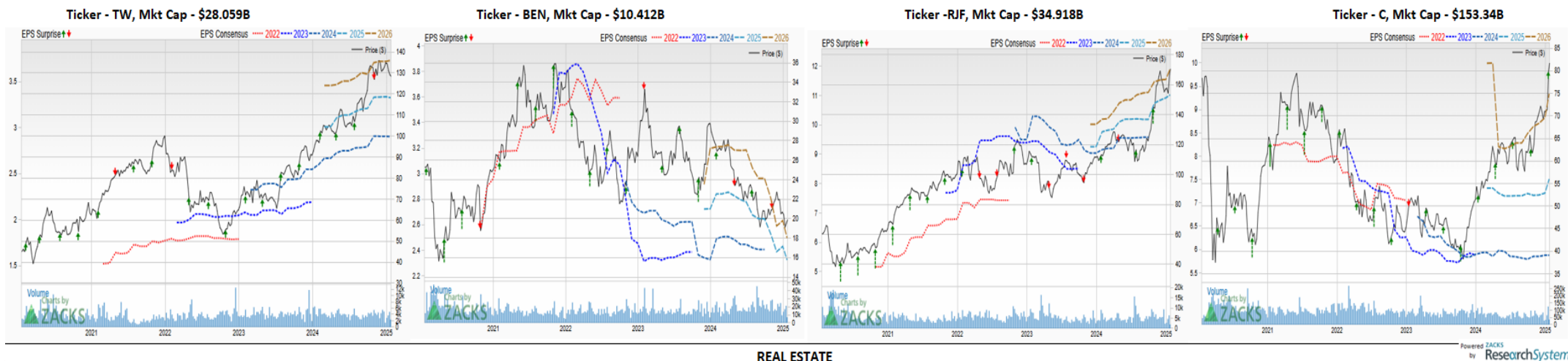
What broad current conditions should traders and investors be made aware of?

Price, EPS Consensus, and EPS Surprise Charts for Top 8 Stocks

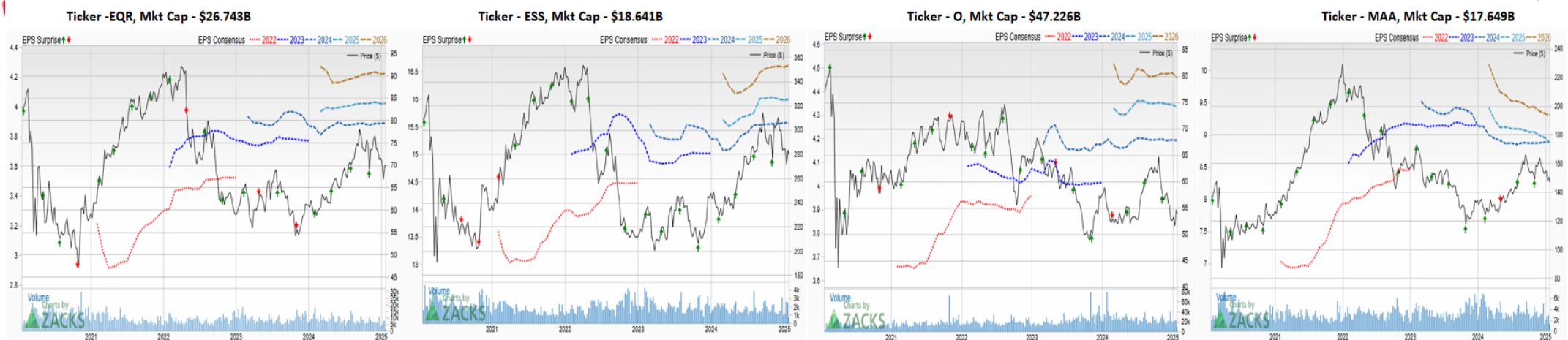
By the maximum # of analysts covering these stocks from the three "Finance" Industry Groups

Price, EPS Consensus and EPS Surprise Charts for Top 8 Stocks by Max., # of Analysts covering these Stocks from the "Finance" Industry Group

INVEST BKRS - MGRS



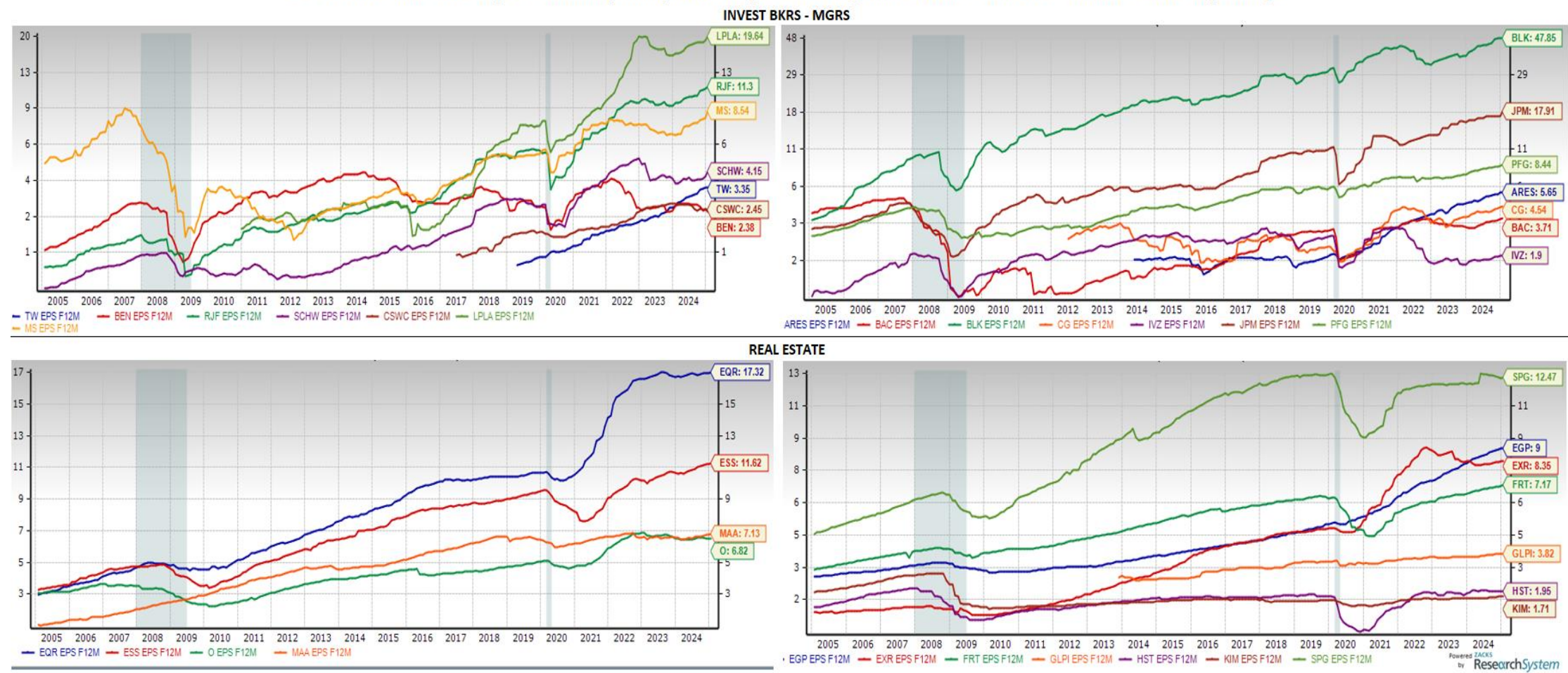
REAL ESTATE



EPS F12M Charts

EPS F12M Charts for Top 15 Stocks by Max # of Analysts from these "Finance" Industry Groups

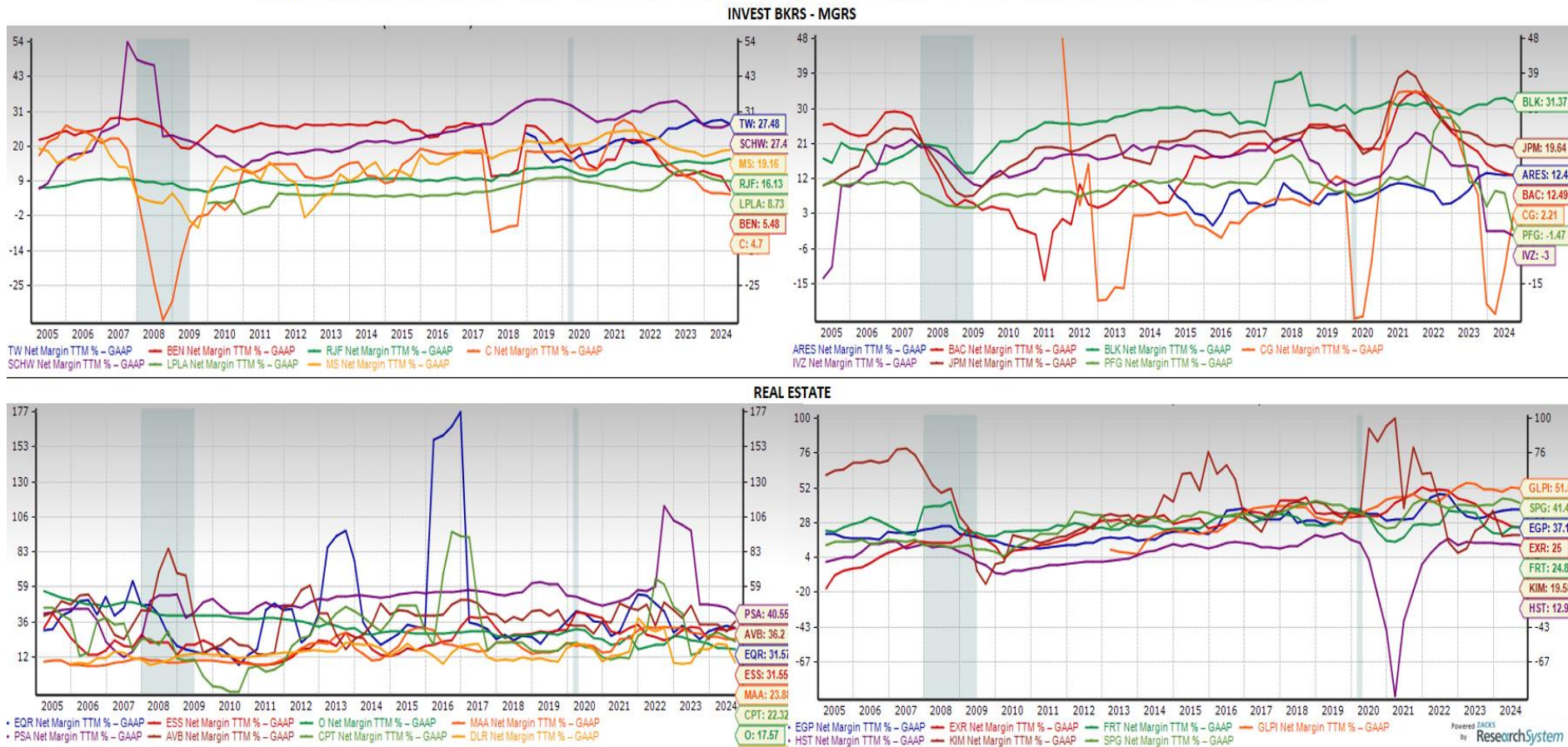
EPS F12M Charts for Top 15 Stocks by Max., # of Analysts covering these stocks from the "Finance" Industry Group



Net Margin TTM % for Top 15 Stocks -

For Top 15 Stocks by Max. # of Analysts Covering These Stocks from the three "Finance" Industry Groups

Net Margin TTM % Charts for Top 15 Stocks by Max., # of Analysts covering these stocks from the "Finance" Industry Group



Tradeweb Markets Inc. (TW) is an operator of electronic marketplaces for the trading of products across the rates, credit, money markets and equities asset classes.

The Company provides access to markets, data and analytics, electronic trading, straight-through-processing and reporting to clients in the institutional, wholesale and retail markets.

Tradeweb Markets Inc. (TW) is based in New York, United States.

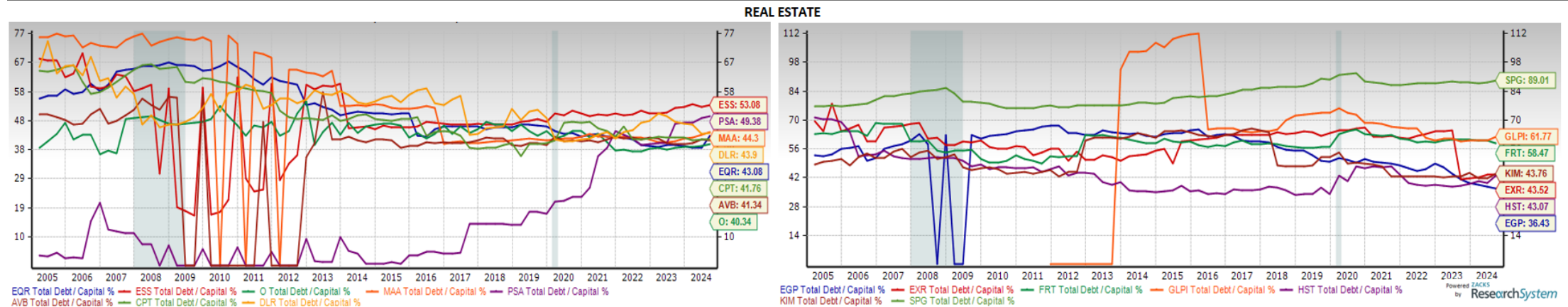
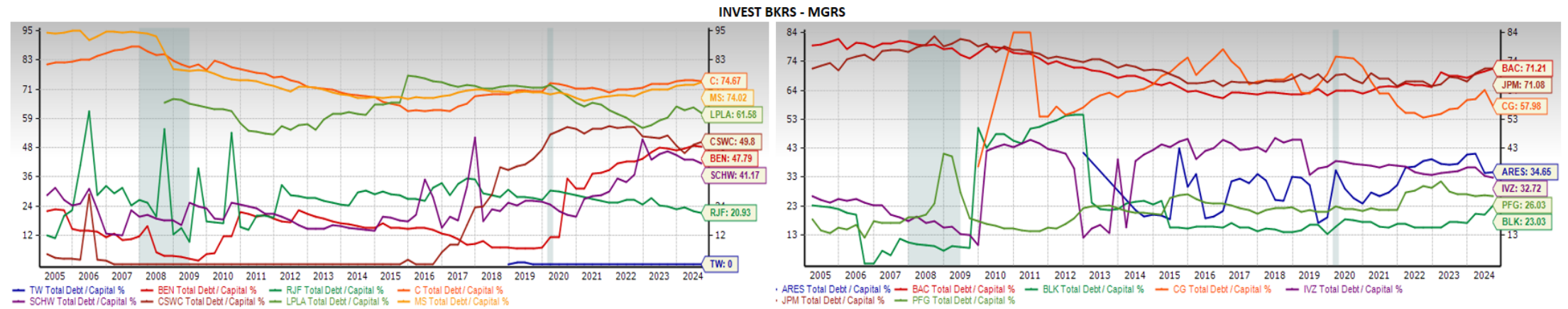
Gaming and Leisure Properties, Inc. (GLPI) is a self-administered, self-managed REIT primarily engaged in the property business, which will consist of owning, acquiring, developing, expanding, managing, and leasing gaming and related facilities.

Gaming and Leisure Properties, Inc. is based in United States.

Total Debt to Capital % Charts

For Top 15 Stocks by Max. # of Analysts Covering These Stocks from these "Finance" Industry Groups

Total Debt to Capital % Charts for Top 15 Stocks by Max. # of Analysts covering these stocks from the "Finance" Industry Group



Part Three:

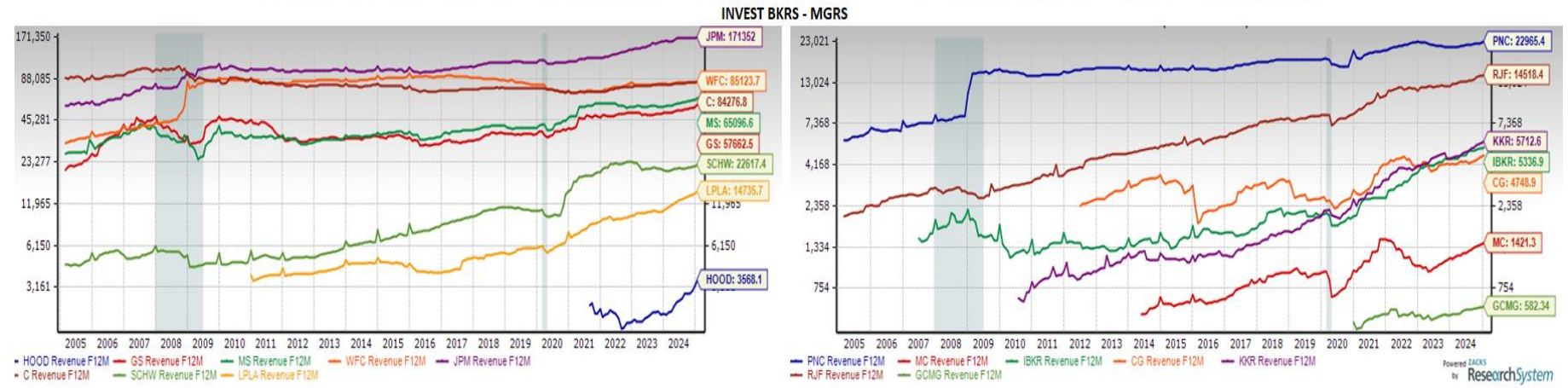
Top Stocks by Largest 1 Month % Change in Current Fiscal Year F1 EPS Estimates

What broad current conditions should traders and investors be made aware of?

Revenue F12M Charts

For Top 15 Stocks by Largest 1 Month % Change in Current Fiscal Yest F1 EPS Estimate from the “Finance” Industry Groups

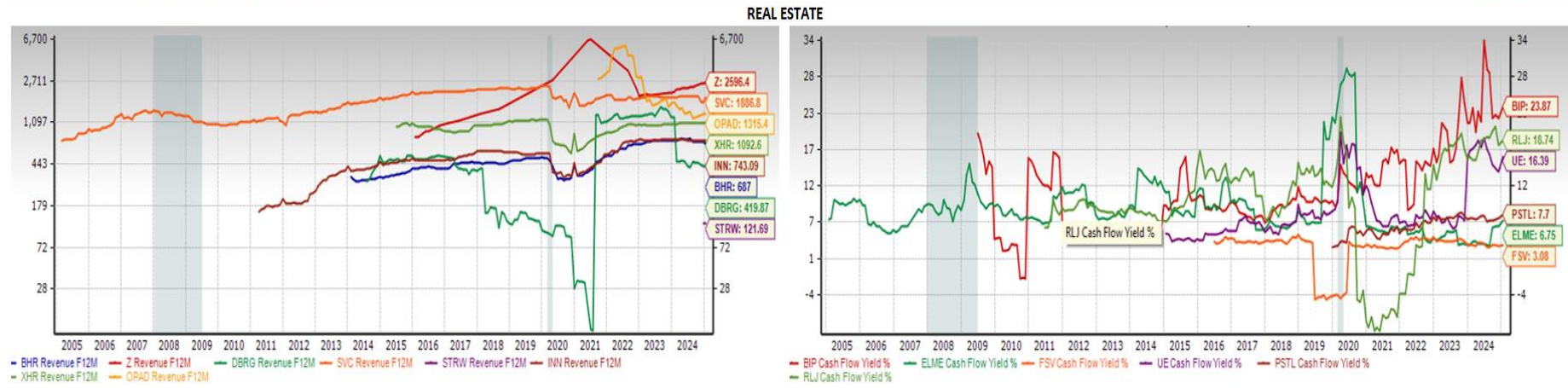
Revenue F12M Charts for Top 15 Stocks by Largest 1 Month % Change in F1 EPS Estimate from the "Finance" Industry Group



BROOKFIELD INFRASTRUCTURE PARTNERS L.P. (BIP) was established by Brookfield Asset Management as its primary vehicle to own and operate certain infrastructure assets on a global basis.

Brookfield Infrastructure operates high quality, long-life assets that generate stable cash flows, require relatively minimal maintenance capital expenditures and, by virtue of barriers to entry and other characteristics, tend to appreciate in value over time.

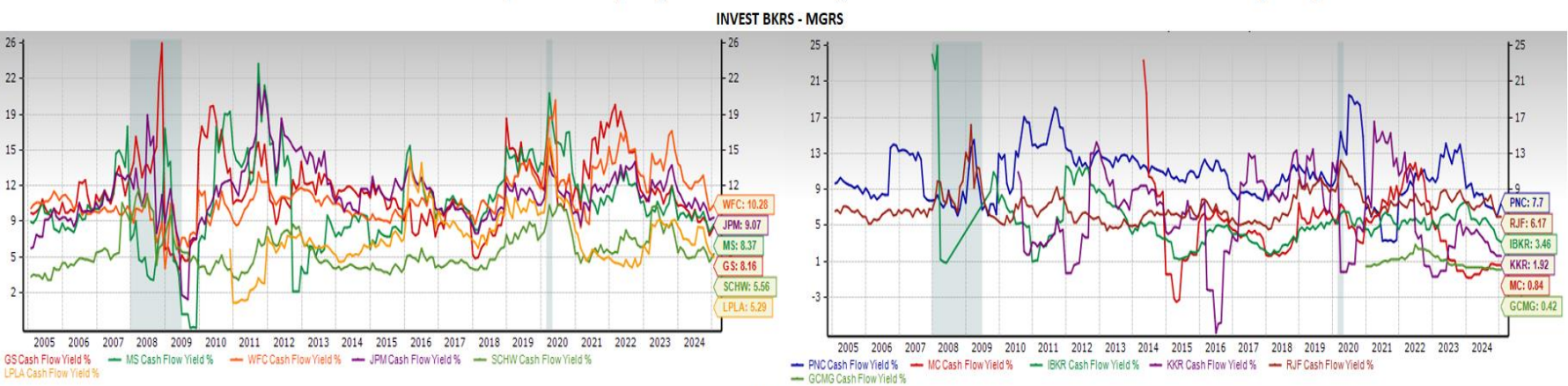
Its current business consists of the ownership and operation of premier electricity transmission systems and timberlands in North and South America, and it seeks acquisition opportunities in other infrastructure sectors with similar attributes.



Cash Flow Yield % Charts

For Top 15 Stocks by Largest 1 Month % Change in Current Fiscal Yest F1 EPS Estimate from the “Finance” Industry Groups

Cash Flow Yield % Charts for Top 15 Stocks by Largest 1 Month % Change in F1 EPS Estimate from the "Finance" Industry Group



Braemar Hotels & Resorts Inc. (BHR) operates as a real estate investment trust. It focused on investing in luxury hotels and resorts.

Braemar Hotels & Resorts Inc., formerly known as Ashford Hospitality Prime is based in Texas, United States.

RLJ Lodging Trust is a REIT (RLJ) focused on investing primarily in premium-branded, focused-service, and compact full-service hotels.

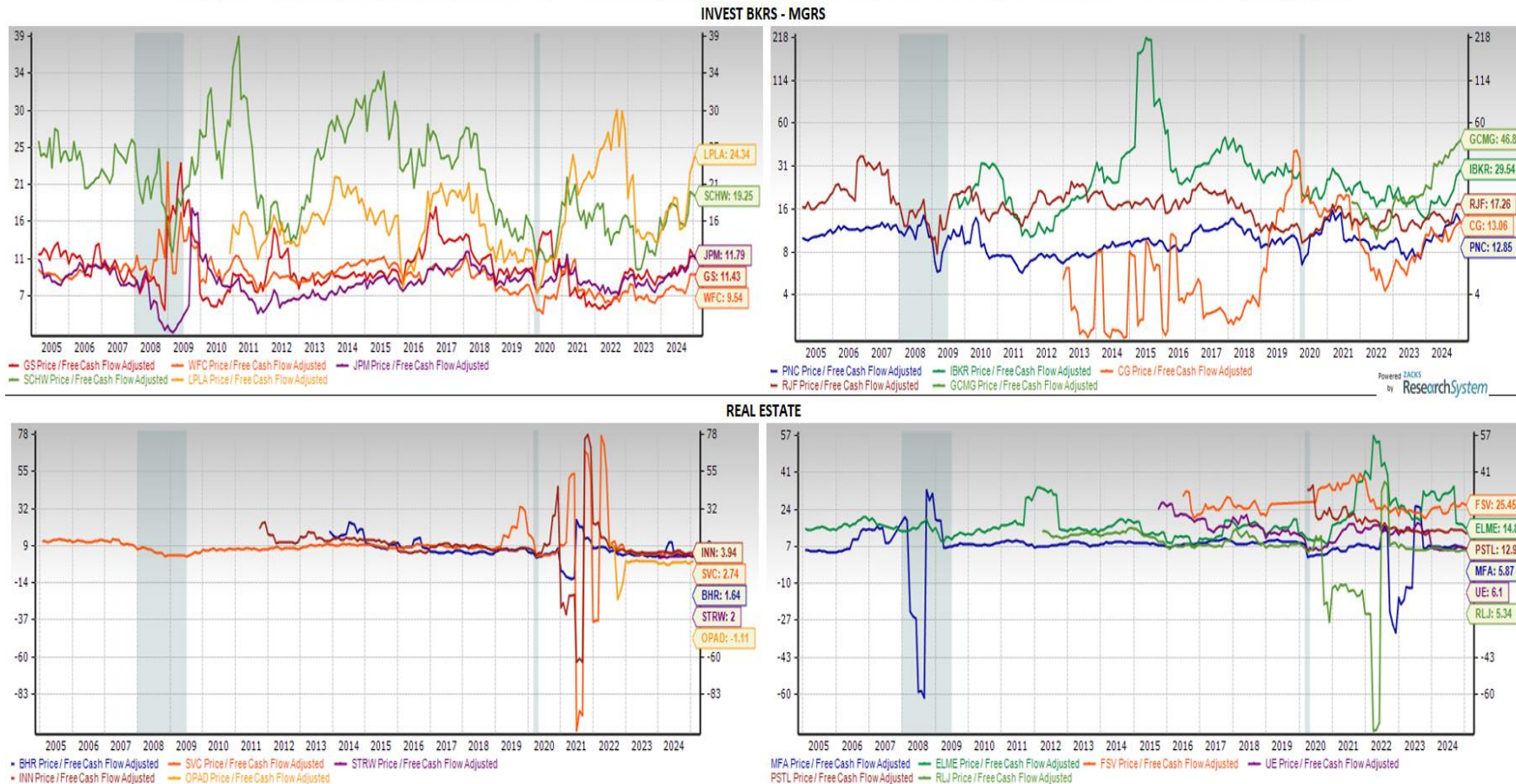
It plans to own hotels concentrated in urban and dense suburban markets.



Price/Free Cash Flow

For Top 15 Stocks by Largest 1 Month % Change in F1 EPS from the three "Finance" Industry Groups.

Price/Free Cash Flow Adjusted Charts for Top 15 Stocks by Largest 1 Month % Change in F1 EPS Estimate from the "Finance" Industry Group



GCM Grosvenor (GCMG) is an alternative asset management solutions provider with assets under management across private equity, infrastructure, real estate, credit and absolute return investment strategies.

It operates principally in New York, Los Angeles, London, Tokyo, Hong Kong, and Seoul.

GCM Grosvenor, formerly known as CF Finance Acquisition Corp., is headquartered in Chicago, IL.

FirstService Corporation (FSV) offers property services to commercial, institutional and residential customers primarily in North America and internationally.

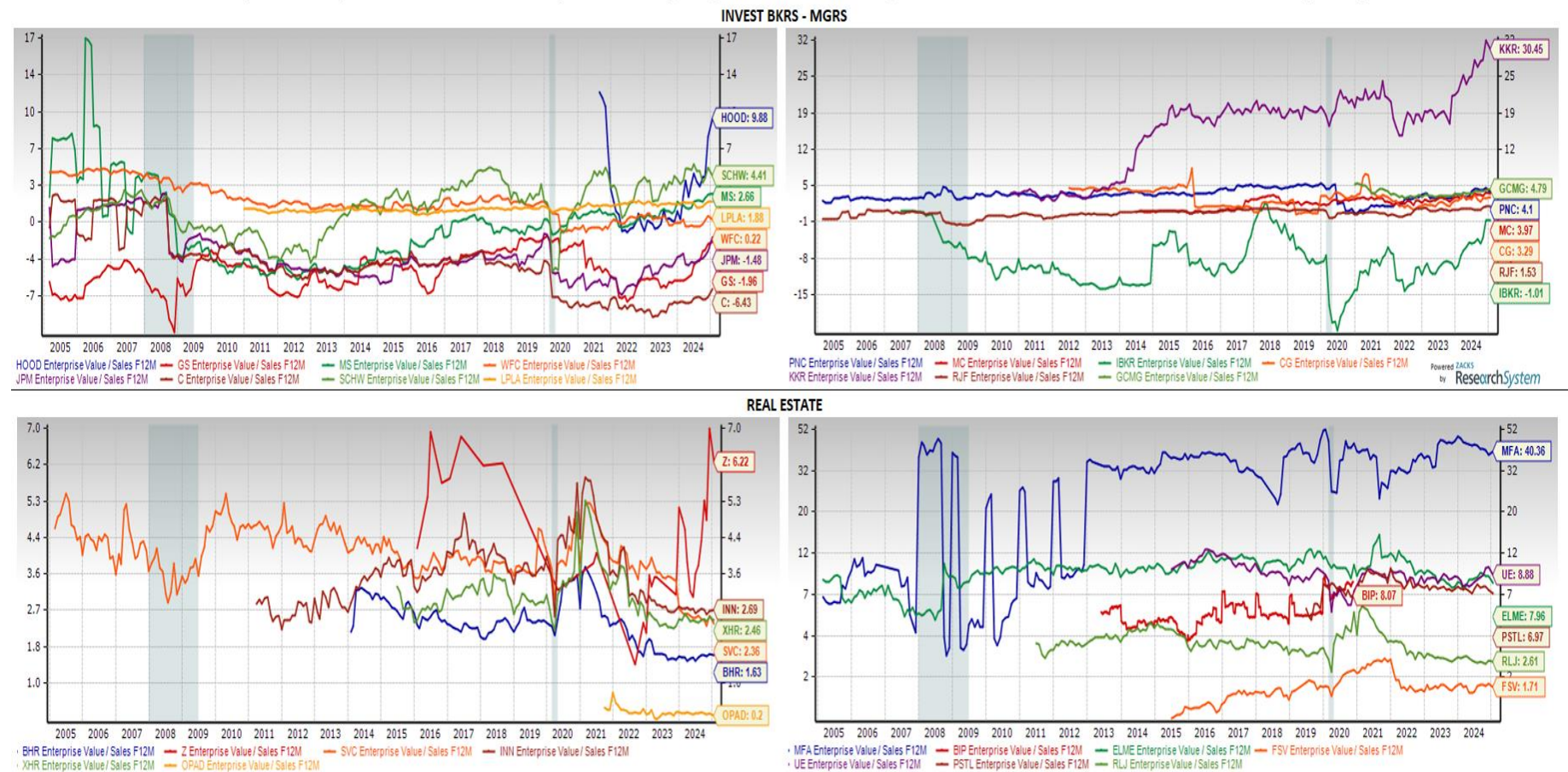
Its operating segment consists of Commercial Real Estate Services, Residential Real Estate Services and Property Services.

FirstService Corporation is headquartered in Toronto, Canada.

Enterprise Value/Sales F12M Charts

For Top 15 Stocks by Largest 1 Month % Change in Current Fiscal Yest F1 EPS Estimate from the “Finance” Industry Groups

Enterprise Value/Sales F12M Charts for Top 15 Stocks by Largest 1 Month % Change in F1 EPS Estimate from the "Finance" Industry Group



Based in New York, **KKR & Co. Inc. (KKR)** is a global investment firm that offers alternative asset management, capital markets and insurance solutions.

KKR sponsors investment funds that invest in private equity, credit and real assets and has strategic partners that manage hedge funds.

KKR's insurance subsidiaries offer retirement, life and reinsurance products under the management of The Global Atlantic Financial Group LLC ("TGAFG" and, together with its insurance companies and other subsidiaries, "Global Atlantic").

KKR & Co. joined the S&P 500 index on June 24, 2024.

Price to Sales F12M, EBIT TTM, Total Liabilities, & Quick Ratio

For Industry Groups from these "Finance" Industry Groups: **Investment Brokers-Managers (Z150M)** and **Real Estate (Z152M)**

Price to Sales F12M, EBIT TTM, Total Liabilities & Quick Ratio Charts for Industry Group from the "Finance" Industry Group

Price to Sales F12M



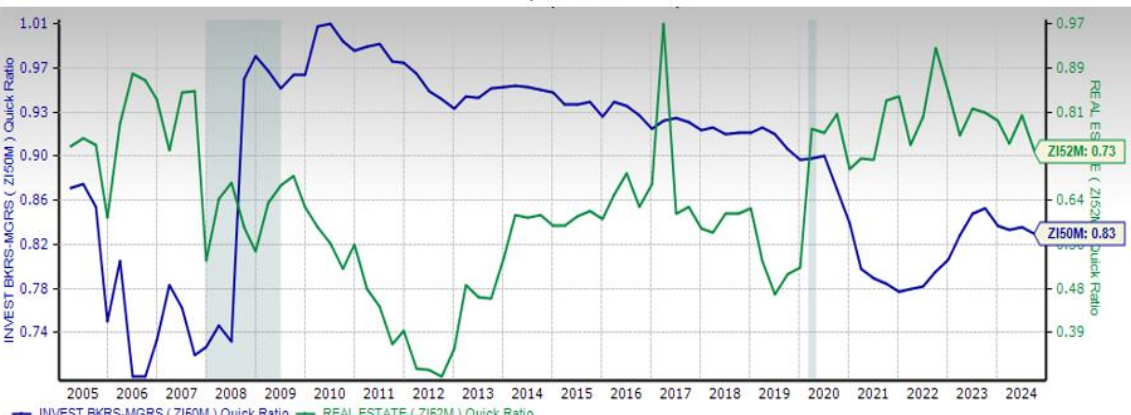
EBIT TTM



Total Liabilities



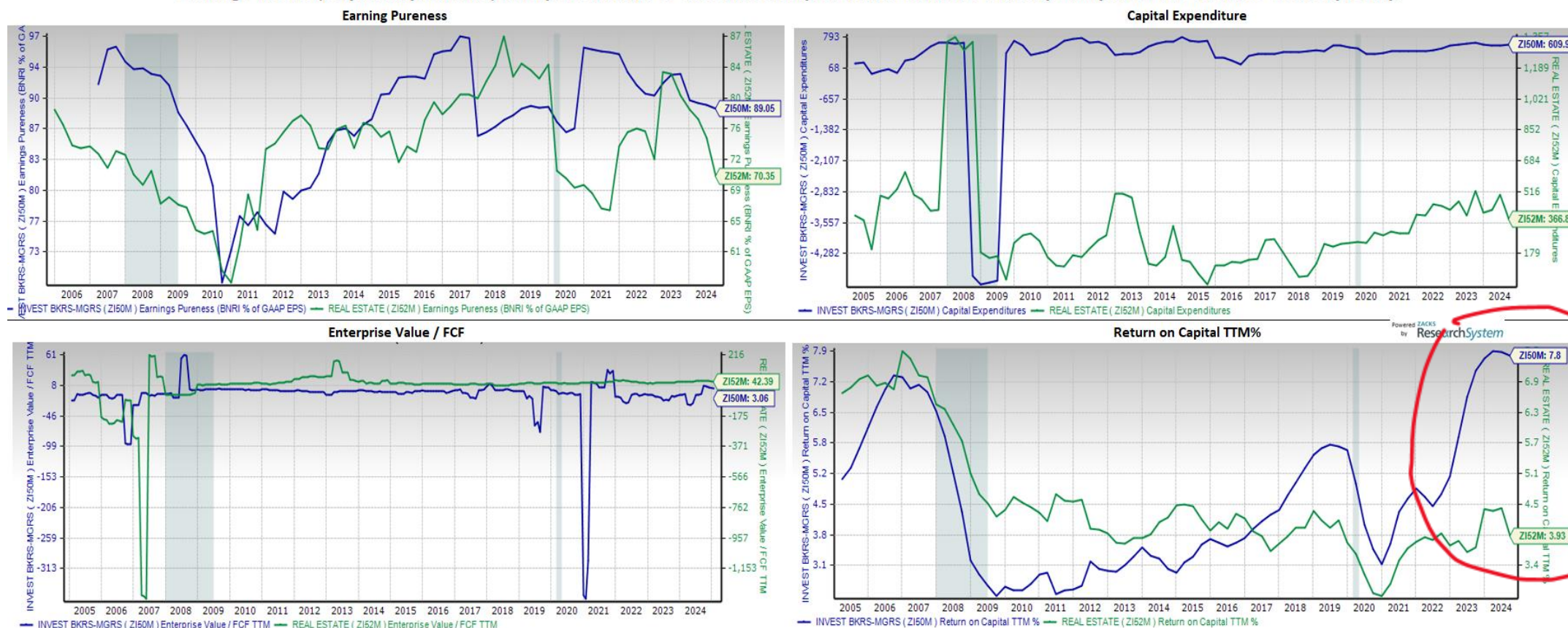
Quick Ratio



Earnings Purenness, Capital Expenditure, and Free Cash Flow/Net Income, & Return on Capital TTM%

For Industry Groups from these "Finance" Industry Groups: **Investment Brokers-Managers (Z150M)** and **Real Estate (Z152M)**

Earning Purenness, Capital Expenditure, Enterprise Value/FCF & Return on Capital TTM% Charts for Industry Group from the "Finance" Industry Group





Part Four:

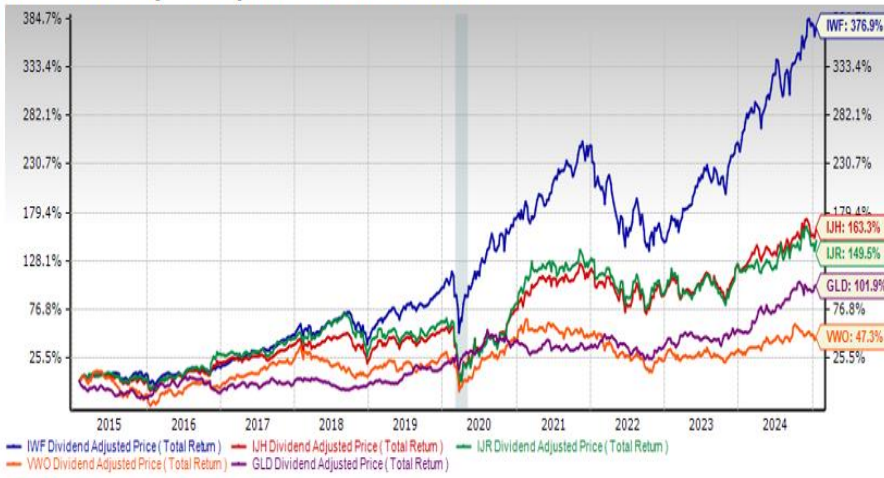
Top “Investment Fund” Industry Group ETFs

What broad current conditions should traders and investors be made aware of?

Total Return Charts

For the "Investment Fund" Industry Group ETFs over 10 Years

Total Return Charts for "Investment Fund" Industry Group ETFs over 10 Years



iShares Russell 1000 Growth ETF: (IWF)

Financial Select Sector SPDR ETF: (XLF)

Invesco S&P 500 Equal Weight ETF: (RSP)

Miscellaneous Data Points

For “Investment Fund” Industry Group ETFs

Miscellaneous Data Points for "Investment Fund" Industry Group ETFs

ETF Ticker	Name of the ETF	Sponsor	Benchmark	Inception Date	Expense Ratio in %
SPY	SPDR-SP 500 TR	STATE STREET GLOBAL ADVISORS	S&P 500 INDEX	19930122	0.09
IVV	ISHARS-SP500	BLACKROCK	S&P 500 INDEX	20000515	0.03
VTI	VIPERS-TOT STK	VANGUARD	CRSP US TOTAL MARKET INDEX	20010521	0.03
QQQ	INVESTCO-QQQ TS	INVESCO	NASDAQ-100 INDEX	19990310	0.20
AGG	ISHARS-CR US AG	BLACKROCK	BLOOMBERG US AGGREGATE BOND INDEX	20030922	0.03
IWF	ISHARS-RS 1K GR	BLACKROCK	RUSSELL 1000 GROWTH INDEX	20000522	0.19
IJH	ISHARS-SP MID	BLACKROCK	S&P MIDCAP 400 INDEX	20000522	0.05
IJR	ISHARS-SP SC600	BLACKROCK	S&P SMALLCAP 600 INDEX	20000522	0.06
VWO	VANGD-FTSE EM	VANGUARD	FTSE EM ALL CAP CHINA A INCLUSION INDEX	20050304	0.08
GLD	SPDR-GOLD TRUST	STATE STREET GLOBAL ADVISORS	GOLD BULLION	20041118	0.40
IWM	ISHARS-R 2000	BLACKROCK	RUSSELL 2000 INDEX	20000522	0.19
RSP	INVS-SP5 EQ ETF	INVESCO	S&P 500 EQUAL WEIGHT INDEX	20030424	0.20
IWD	ISHARS-RS 1K VL	BLACKROCK	RUSSELL 1000 VALUE INDEX	20000522	0.19
EFA	ISHARS-EAFE	BLACKROCK	MSCI EAFE INDEX	20010814	0.32
TLT	ISHARS-20+YTB	BLACKROCK	IDC US TREASURY 20+ YEAR INDEX (4PM)	20020722	0.15
XLF	SPDR-FINL SELS	STATE STREET GLOBAL ADVISORS	FINANCIAL SELECT SECTOR INDEX	19981216	0.09
IWR	ISHARS-RS MC	BLACKROCK	RUSSELL MIDCAP INDEX	20010721	0.19
MUB	ISHARS-NAMTF	BLACKROCK	ICE AMT-FREE US NATIONAL MUNICIPAL INDEX	20070907	0.05
DIA	SPDR-DJ IND AVG	STATE STREET GLOBAL ADVISORS	DOW JONES INDUSTRIAL AVERAGE	19980114	0.16
MBB	ISHARS-MBS	BLACKROCK	BLOOMBERG U.S. MBS INDEX	20070313	0.04

Source : Zacks Investment Research

Top 10 Holdings in the Top by AuM(\$M) Funds

For the Top "Investment Fund" Industry Group ETFs

Top 10 Holdings in Top 10 by AuM (\$Million) of "Investment Fund" Industry Group ETFs

Ticker : SPY, AuM : \$636370M		Ticker : IVV, AuM : \$599780M		Ticker : VTI, AuM : \$469950M		Ticker : QQQ, AuM : \$324810M		Ticker : AGG, AuM : \$120150M	
Holding	Allocation %	Holding	Allocation %	Holding	Allocation %	Holding	Allocation %	Holding	Allocation %
Apple Inc.	6.82%	NVIDIA Corporation	6.98%	Apple Inc.	6.66%	NVIDIA Corporation	8.68%	U.S. Dollar	2.68%
NVIDIA Corporation	6.63%	Apple Inc.	6.55%	Microsoft Corporation	5.52%	Apple Inc.	8.47%	US Treasury N 1.375% 15-NOV-2031	0.52%
Microsoft Corporation	6.26%	Microsoft Corporation	6.42%	NVIDIA Corporation	5.50%	Microsoft Corporation	8.02%	US Treasury N 0.375% 31-JAN-2026	0.51%
Amazon.com, Inc.	4.15%	Amazon.com, Inc.	4.25%	Amazon.com, Inc.	3.66%	Amazon.com, Inc.	6.11%	US Treasury N 4.0% 15-DEC-2027	0.49%
Meta Platforms Inc Cl A	2.62%	Meta Platforms Inc Cl A	2.63%	Meta Platforms Inc Cl A	2.25%	Broadcom Inc.	4.67%	US Treasury N 4.375% 15-MAY-2034	0.46%
Tesla, Inc.	2.34%	Tesla, Inc.	2.24%	Alphabet Inc. Cl A	1.95%	Tesla, Inc.	3.87%	US Treasury N 4.5% 15-NOV-2033	0.45%
Alphabet Inc. Cl A	2.25%	Alphabet Inc. Cl A	2.24%	Tesla, Inc.	1.94%	Meta Platforms Inc Cl A	3.38%	US Treasury N 4.0% 15-FEB-2034	0.45%
Broadcom Inc.	2.18%	Broadcom Inc.	2.18%	Broadcom Inc.	1.91%	Alphabet Inc. Cl A	2.91%	US Treasury N 3.875% 15-AUG-2034	0.44%
Alphabet Inc. Cl C	1.84%	Alphabet Inc. Cl C	1.84%	Alphabet Inc. Cl C	1.58%	Alphabet Inc. Cl C	2.78%	US Treasury N 3.875% 15-AUG-2033	0.43%
Berkshire Hathaway Inc. Cl B	1.68%	Berkshire Hathaway Inc. Cl B	1.63%	Berkshire Hathaway Inc.	1.41%	Costco Wholesale Corporation	2.60%	US Treasury N 3.375% 15-MAY-2033	0.39%

Ticker : IWF, AuM : \$106310M		Ticker : IJH, AuM : \$98660M		Ticker : IJR, AuM : \$89390M		Ticker : VWO, AuM : \$78890M		Ticker : GLD, AuM : \$76080M	
Holding	Allocation %	Holding	Allocation %	Holding	Allocation %	Holding	Allocation %	Holding	Allocation %
NVIDIA Corporation	11.29%	Williams-Sonoma, Inc.	0.87%	MUTUAL FUND (OTHER)	4.41%	Taiwan Semiconductor Manu'g	9.21%	EQUITY OTHER	100.00%
Microsoft Corporation	10.88%	EMCOR Group, Inc.	0.80%	Glaukos Corp	0.63%	Tencent Holdings Ltd.	3.90%		
Apple Inc.	10.51%	Interactive Brokers Group, Inc.	0.74%	Alaska Air Group, Inc.	0.61%	Alibaba Group Holding Limited	2.12%		
Amazon.com, Inc.	7.23%	Pure Storage, Inc. Cl A	0.73%	V.F. Corporation	0.59%	HDFC Bank Limited	1.37%		
Meta Platforms Inc Cl A	4.48%	Expand Energy Corporation	0.73%	Qorvo, Inc.	0.59%	Meituan Cl B	1.26%		
Alphabet Inc. Cl A	3.82%	Illumina, Inc.	0.72%	Bath & Body Works, Inc.	0.59%	Reliance Industries Limited	1.11%		
Tesla, Inc.	3.78%	Comfort Systems USA, Inc.	0.64%	ATI Inc.	0.58%	China Construction Bank Corp. Cl H	0.92%		
Broadcom Inc.	3.59%	DocuSign, Inc.	0.61%	SPS Commerce, Inc.	0.52%	Infosys Limited	0.91%		
Alphabet Inc. Cl C	3.18%	Burlington Stores, Inc.	0.59%	SPX Technologies, Inc.	0.51%	Xiaomi Corp. Cl B	0.84%		
Eli Lilly and Company	1.98%	Carlisle Companies Incorp.	0.59%	Robert Half Inc.	0.51%	ICICI Bank Limited	0.81%		

*Note : Allocation % as on 01/22/2025

Source : www.etf.com

Return Analysis

For Top "Investment Fund" Industry Group ETFs from 12/31/2014 to 12/31/2017

Return Analysis Table for Top "Investment Fund" Industry Group ETFs from 12/31/2014 to 12/31/2024

ETF Tickers	From 12/31/2014 - 12/31/2024				From 12/31/2023 - 12/31/2024				From 12/31/2020 - 12/31/2023				From 12/31/2017 - 12/31/2020				From 12/31/2014 - 12/31/2017			
	Cumulative Rtns.	Max	Min	Std., Dev	Cumulative Rtns.	Max	Min	Std., Dev	Cumulative Rtns.	Max	Min	Std., Dev	Cumulative Rtns.	Max	Min	Std., Dev	Cumulative Rtns.	Max	Min	Std., Dev
SPY	239.39	12.70	-12.52	4.41	24.88	5.96	-4.03	2.95	32.92	9.21	-9.21	5.00	48.15	12.70	-12.52	5.32	38.02	8.51	-6.09	2.87
IVV	241.76	12.68	-12.16	4.41	24.94	5.92	-4.05	2.95	33.13	9.27	-9.22	5.01	48.54	12.68	-12.16	5.31	38.34	8.48	-6.14	2.88
VTI	224.52	13.13	-13.90	4.53	23.81	6.70	-4.34	3.12	27.48	9.42	-9.21	5.04	49.83	13.13	-13.90	5.57	37.22	7.91	-6.09	2.93
QQQ	435.76	14.97	-13.60	5.33	25.57	6.47	-4.37	3.24	33.04	12.55	-13.60	6.40	106.20	14.97	-8.67	5.86	55.53	11.37	-6.91	3.86
AGG	13.68	4.58	-4.14	1.47	1.31	2.41	-2.51	1.65	-9.71	4.58	-4.14	2.08	16.64	2.78	-1.13	1.00	6.55	2.05	-2.56	0.83
IWF	363.45	14.69	-12.20	4.93	33.12	6.63	-4.22	3.38	28.55	12.10	-12.20	5.94	84.67	14.69	-10.06	5.63	46.65	8.70	-6.11	3.05
IJH	150.54	14.28	-20.27	5.35	13.94	8.89	-7.16	4.80	26.17	10.92	-9.62	5.71	27.14	14.28	-20.27	6.72	37.08	8.60	-5.60	3.13
IJR	134.65	18.22	-22.57	5.94	8.67	11.07	-8.04	5.82	23.14	12.77	-9.83	6.04	25.00	18.22	-22.57	7.39	40.27	12.52	-6.16	3.92
VWO	47.65	14.30	-17.06	4.74	10.58	7.30	-3.55	2.84	-9.20	14.30	-9.99	4.64	18.50	9.66	-17.06	5.64	24.09	12.71	-9.86	4.28
GLD	113.18	10.93	-8.36	4.05	26.66	8.67	-3.12	3.27	7.18	8.49	-7.15	4.06	44.25	10.79	-5.41	3.76	8.87	10.93	-8.36	4.42
IWM	110.92	18.24	-21.49	5.96	11.39	11.07	-8.36	5.94	6.42	12.13	-9.90	6.11	33.73	18.24	-21.49	7.29	33.05	11.06	-8.58	3.99
RSP	156.91	14.43	-18.09	4.86	11.89	6.43	-6.27	3.76	30.02	9.65	-9.40	5.25	33.70	14.43	-18.09	6.14	32.09	7.98	-5.56	2.96
IWD	122.33	13.42	-17.48	4.52	14.17	6.45	-6.85	3.83	28.37	10.11	-8.72	4.76	18.77	13.42	-17.48	5.65	27.72	7.51	-5.97	2.95
EFA	66.46	14.27	-14.11	4.37	3.56	5.06	-5.27	3.07	13.10	13.17	-9.22	4.95	13.10	14.27	-14.11	5.09	25.66	6.61	-7.43	3.18
TLT	-10.72	11.03	-9.41	4.04	-8.02	3.62	-6.43	3.58	-32.52	9.89	-9.41	4.80	32.59	11.03	-5.04	3.74	8.49	9.82	-8.20	3.36
XLF	189.82	16.85	-21.10	5.71	30.54	10.46	-5.46	4.28	35.01	11.92	-10.87	6.01	12.64	16.85	-21.10	6.76	45.99	14.03	-8.85	4.46
IWR	156.54	14.29	-19.68	5.06	15.22	8.86	-7.07	4.36	18.28	10.21	-9.96	5.51	43.82	14.29	-19.68	6.29	30.88	8.13	-6.55	2.97
MUB	22.22	5.69	-4.09	1.39	1.26	1.66	-1.33	0.96	-1.20	5.69	-2.80	1.94	13.55	3.76	-2.98	1.13	7.57	1.72	-4.09	1.02
DIA	194.46	14.03	-13.64	4.45	14.81	7.83	-5.19	3.47	30.36	14.03	-8.72	4.81	31.89	12.15	-13.64	5.37	49.17	8.58	-6.20	3.14
MBB	8.12	5.20	-5.08	1.44	1.31	2.63	-2.81	1.84	-8.62	5.20	-5.08	2.22	11.39	1.76	-1.15	0.62	4.84	1.40	-1.88	0.55

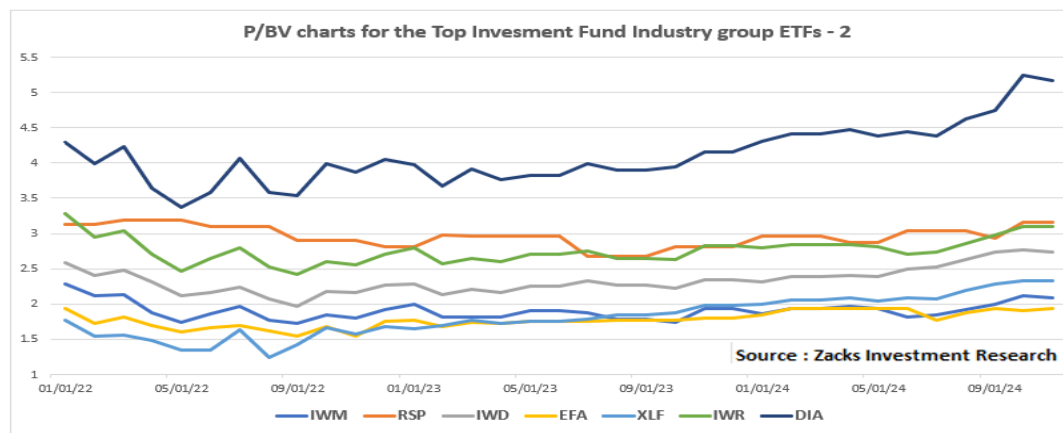
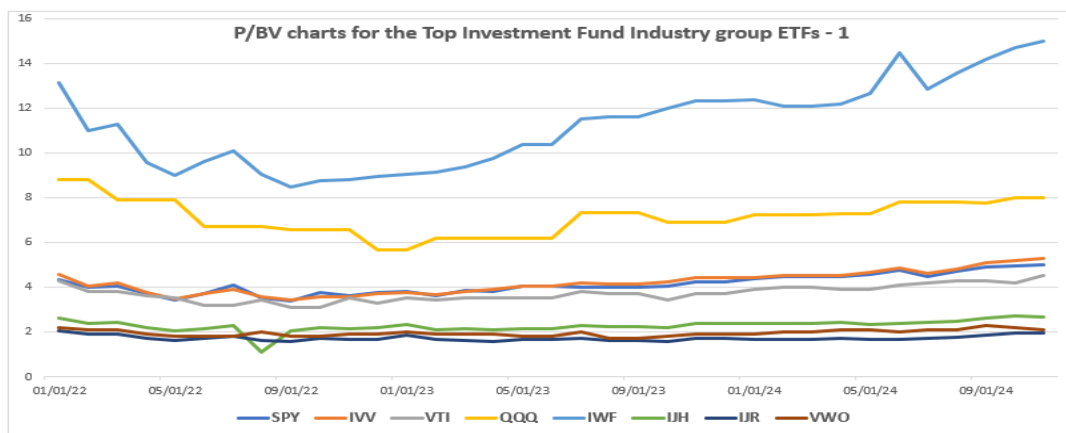
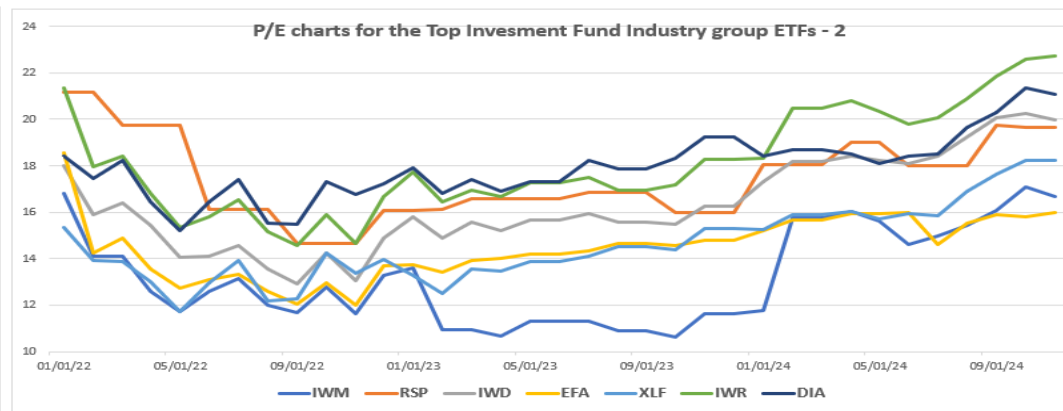
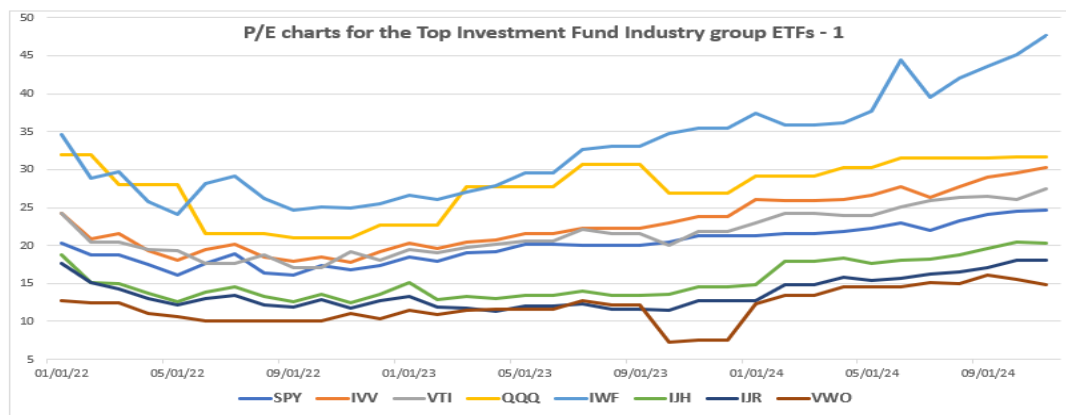
Note : All Returns in %

Source : Zacks Investment Research

P/E (Top) and P/BV (Bottom)

For Top "Investment Fund" Industry Group ETFs over 3 years

P/E (Top) and P/BV (Bottom) Charts for the Top "Investment Fund" Industry Group ETFs over 3 Years



Thank You for Attending!

John Blank, PhD

Zacks Chief Equity Strategist and Economist

Zacks Professional Services

866-794-6065

strategycall@zackspro.com

www.zackspro.com



Zacks Professional Services



@ZATools