

# Disclosures

The views of John Blank, PhD are not necessarily the views of Zacks Investment Research. Past performance is no guarantee of future results. Inherent in any investment is the potential for loss. This material is being provided for informational purposes only and nothing herein constitutes investment, legal, accounting or tax advice, or a recommendation to buy, sell or hold a security. No recommendation or advice is being given as to whether any investment is suitable for a particular investor. It should not be assumed that any investments in securities, companies, sectors or markets identified and described were or will be profitable. All information is current as of the date herein and is subject to change without notice. Any views or opinions expressed may not reflect those of the firm as a whole. Zacks Investment Research is not a licensed securities dealer, broker or US investment adviser or investment bank.

# Travel and Shipping in Focus

## The World's Top Transportation Stocks

Part One: [Top Stocks by Market Capitalization](#)

Part Two: [Top Stocks by the Maximum Number of Analysts](#)

Part Three: [Top Stocks by the Largest 1 Month % Change, in Current Fiscal Year F1 EPS Estimates](#)

Presented by:

**John Blank, PhD**

Zacks Chief Equity Strategist and Economist

03/10/2025



# Review Table for Two Utility Groups in 2025: With Stock Tickers, Company Names, & Market Capitalizations

Market Cap (in \$Millions) for Transportation Industry Codes (57& 58)

Tables with Tickers, Company Name, Market Cap., in \$Millions and Zacks Industry Codes

Tickers	Company Name	Market Cap . , in Mil	Industry Code	Sector : TRANSPORTATION				Tickers	Company Name	Market Cap . , in Mil	Industry Code
GE	Ge Aerospace	217341.33	57	Industry Names				UPS	Utd Parcel Srv	101663.54	57
UPS	Utd Parcel Srv	101663.54	57	Industry Codes				ACDVF	Air Canada	3799.51	57
FDX	Fedex Corp	60311.40	57	TRANSPORTATION - AIR				LUV	Southwest Air	17750.20	57
DAL	Delta Air Lines	36700.25	57	TRANSPORTATION - OTHERS				AAL	Amer Airlines	9265.24	57
UAL	United Airlines	29876.28	57	Tickers	Company Name	Market Cap . , in Mil	Industry Code	DAL	Delta Air Lines	36700.25	57
RYAAY	Ryanair Hldgs	27067.62	57	AZUL	Azul Sa	805.20	57	FDX	Fedex Corp	60311.40	57
ICAGY	Intl Cons Airln	20481.26	57	ULCC	Frontier Gp Hld	1568.02	57	UAL	United Airlines	29876.28	57
AER	Aercap Hldgs Nv	19048.15	57	ALGT	Allegiant Travl	1209.04	57	ALGT	Allegiant Travl	1209.04	57
LUV	Southwest Air	17750.20	57	JOBV	Joby Aviation	5194.93	57	CPA	Copa Hldgs Sa-A	4033.30	57
AIRYY	Air China Ltd	10246.62	57	JAPSY	Japan Airlines	7692.14	57	JBLU	Jetblue Airways	2287.45	57
LTM	Latam Airlines	9924.87	57	CPA	Copa Hldgs Sa-A	4033.30	57	ULCC	Frontier Gp Hld	1568.02	57
DLAKY	Lufthansa -Adr	9274.97	57	AAL	Amer Airlines	9265.24	57	GXX	Gxo Logistics	4599.05	57
AAL	Amer Airlines	9265.24	57	GE	Ge Aerospace	217341.33	57	ALK	Alaska Air Grp	8160.08	57
ALNPY	Ana Holdings	9047.74	57	AIRYY	Air China Ltd	10246.62	57	JOBV	Joby Aviation	5194.93	57
CPCAY	Cathay Pac Air	9019.19	57	AFLYY	Air France-Adr	2447.44	57	AZUL	Azul Sa	805.20	57
UNP	Union Pac Corp	147210.20	58	ATSG	Air Transpt Svc	1468.70	57	CNI	Cdn Natl Ry Co	62902.18	58
CP	Cdn Pac Kc Ltd	71724.20	58	CPCAY	Cathay Pac Air	9019.19	57	CP	Cdn Pac Kc Ltd	71724.20	58
CNI	Cdn Natl Ry Co	62902.18	58	CAAP	Corporacion Sa	2982.08	57	CSX	Csx Corp	58581.54	58
CSX	Csx Corp	58581.54	58	DAL	Delta Air Lines	36700.25	57	NSC	Norfolk Southrn	54036.24	58
NSC	Norfolk Southrn	54036.24	58	GOLLQ	Gol Linhas-Adr	148.49	57	UNP	Union Pac Corp	147210.20	58
DHLGY	Dhl Group	50520.00	58	SMHI	Seacor Marine	143.33	58	CHRW	Ch Robinson Wwd	11622.47	58
DSDVY	Dsv A/S Uns Adr	50195.20	58	GBTG	Global Bus Trvl	3839.30	58	ODFL	Old Dominion Fl	37518.46	58
ODFL	Old Dominion Fl	37518.46	58	GGLL	Golden Ocean Gp	1683.24	58	TFH	Tfi Intl Inc	7041.95	58
WAB	Wabtech	30733.87	58	ECO	Okeanis Eco Tnk	655.79	58	JBHT	Hunt (Jb) Trans	16005.31	58
AMKBY	A P Mollar-Mrsk	27921.96	58	FRO	Frontline Plc	3515.22	58	LSTR	Landstar System	5459.16	58
KHNGY	Kuehne&Nagl Int	27845.82	58	MATX	Matson Inc	4521.06	58	RXX	Rxo Inc	3336.78	58
CICDY	Cosco Ship Hld	23622.02	58	ZIM	Zim Int Shp Srv	2277.76	58	SAIA	Saia Inc	10523.35	58
VIK	Viking Holdings	20645.12	58	EXPD	Expeditors Intl	16300.20	58	SNDR	Schneider Natl	4445.10	58
CJPRY	Central Japan	19984.94	58	FLNG	Flex Lng Ltd	1156.07	58	XPO	Xpo Inc	13216.76	58
BOIVF	Bollere Se	17928.91	58	DHT	Dht Holdings	1669.76	58	ARCB	Arcbest Corp	1733.96	58
				ASR	Grupo Aerop-Adr	8075.70	58				
				OMAB	Grupo Aerop-Ads	3252.00	58				
				CP	Cdn Pac Kc Ltd	71724.20	58				
				CNI	Cdn Natl Ry Co	62902.18	58				
				KNX	Knight-Swift Tr	7884.97	58				

Note : List of Top Stocks by Market Capitalisation

Note : List of Top Stocks by Largest 1 Month Change in F1 Estimate

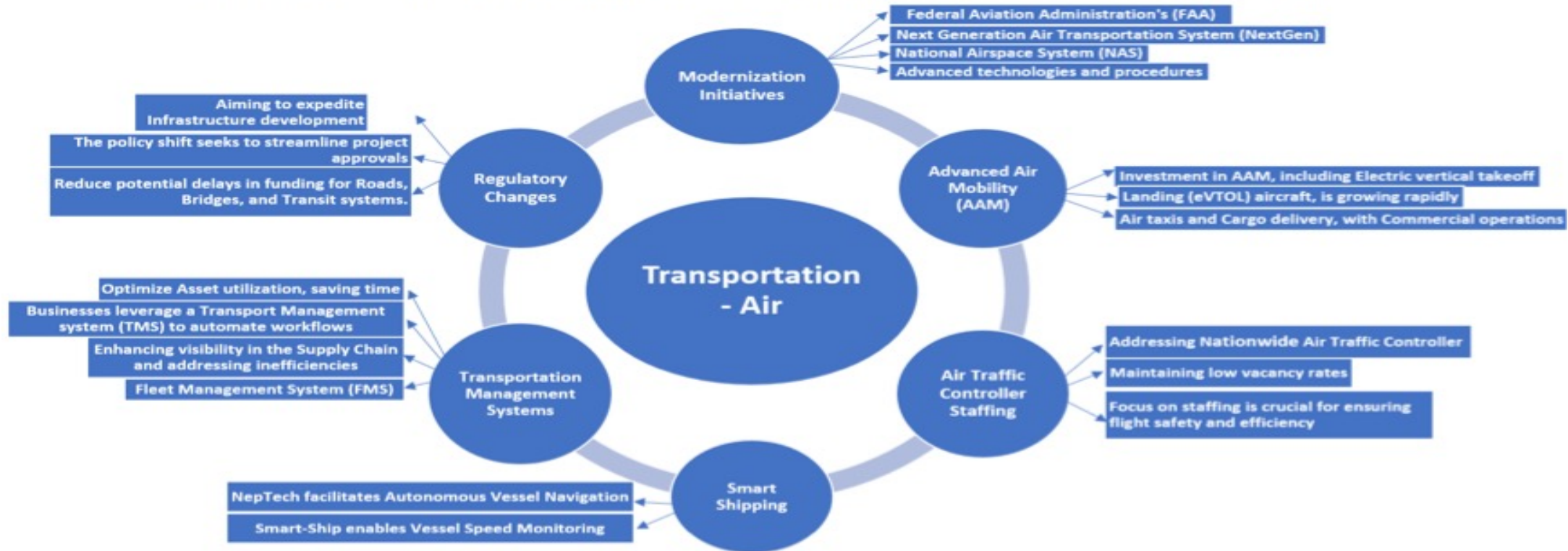
Note : List of Top Stocks by Max. # of Analysts following these Stock

Source : Zacks Investment Research

# Latest Trends and Development in the “Transportation: Air” Industry

*Latest Trends and Development in the “Transportation - Air” Industry*

## Latest Trends and Developments in "Transportation - Air" Industry Group

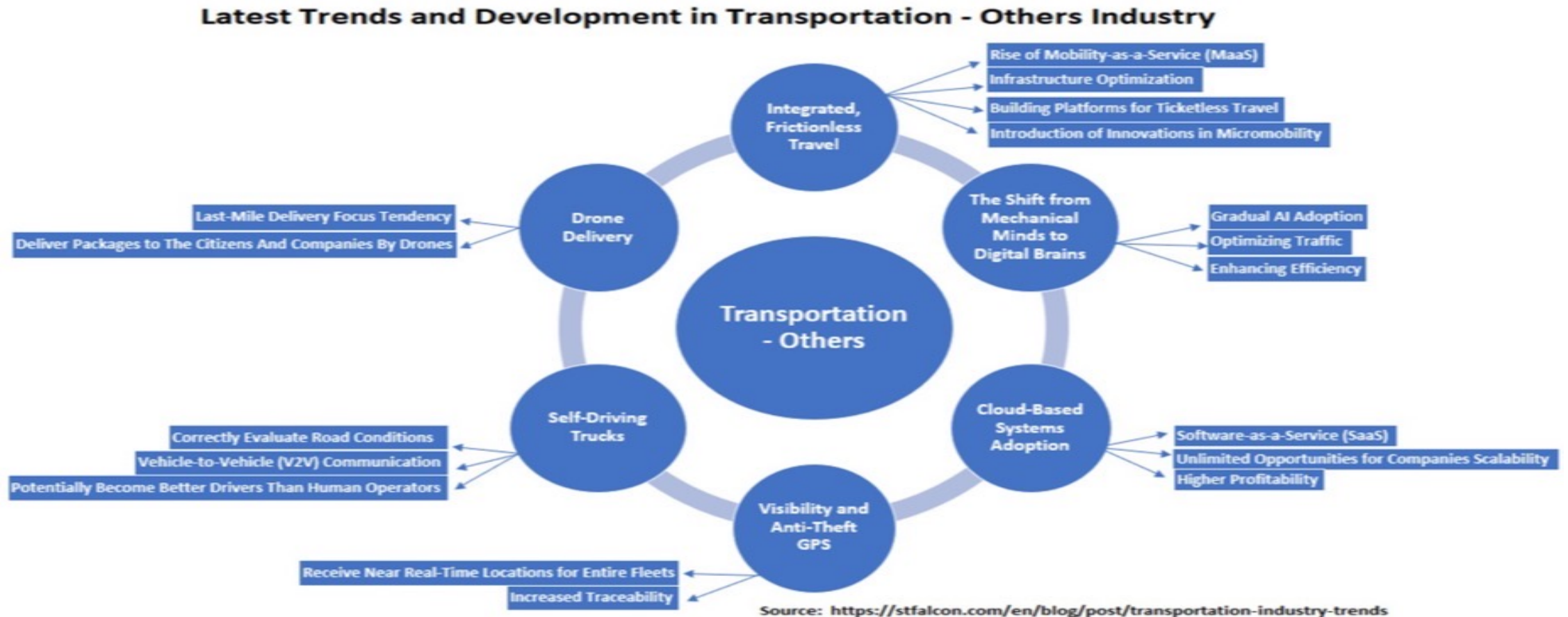


Source: <https://www.axios.com/local/indianapolis/2025/03/05/air-traffic-controller-shortage-flying?utm>  
<https://www.startus-insights.com/innovators-guide/transportation-trends-innovation>  
<https://apnews.com/article/trump-duffy-transportation-spending-delays-review>



# Latest Trends and Development in the “Transportation: Other” Industry

*Latest Trends and Development in the “Transportation - Other” Industry*



# Part One: Top Stocks by Market Capitalization

*What broad current conditions should traders and investors be made aware of?*

# Return on Equity Charts for Top 15 Stocks, by Market Capitalization

*From the 2 Industry Groups in "Transportation"*

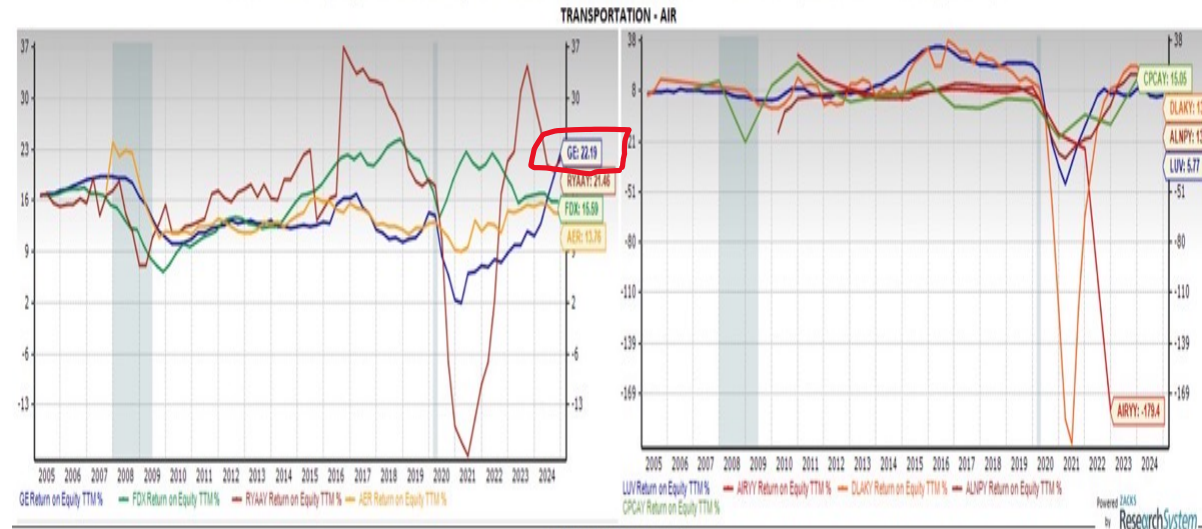
**Union Pacific Corporation (UNP)** provides rail transportation services across 23 states in the United States through its principal operating company, Union Pacific Railroad Company. As the largest railroad in North America, Union Pacific connects the Pacific and Gulf Coast ports with the Midwest and gateways in eastern United States.

The company also connects with Canada's rail systems and is the only railroad, serving all the six major gateways to Mexico.

Union Pacific offers transportation services for agricultural products, automotive, lumber, steel, paper, food, chemicals, coal, and industrial products, as well as for finished vehicles and intermodal containers. Union Pacific, based in Omaha, NE, also provides container and traffic services, primarily for shipper agents and consolidators, as well as for truckload carriers.



Return on Equity Charts for Top 15 Stocks by Market Cap., from the "Transportation" Industry Groups



**GE Aerospace (GE, erstwhile the General Electric Company)** is a leading designer, developer and producer of jet engines, components and integrated systems for military, commercial and business aircraft.

The company is well-known for its aero-derivative gas turbines for marine applications.

Its zeal to invest in upgrades and innovation of products along with outstanding service capabilities and technological expertise raises its competitive appeal.

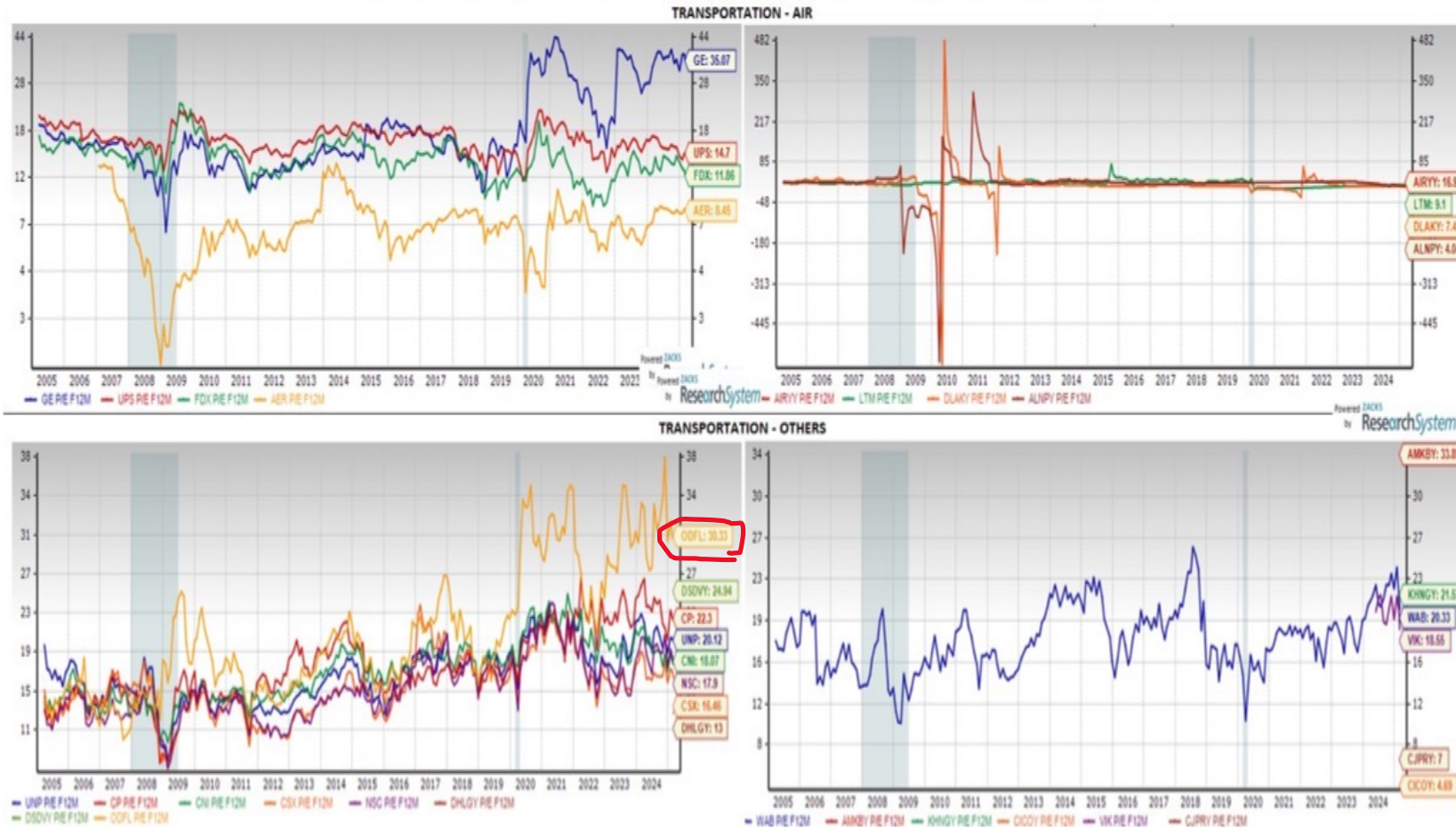




# P/E F12M Charts for Top 15 Stocks by Market Cap

From the 2 Industry Groups in "Transportation"

PE F12M Charts for Top 15 Stocks by Market Cap., from the "Transportation" Industry Groups



**Old Dominion Freight Line, Inc. (ODFL)** is one of the largest North American less-than-truckload (LTL) motor carriers and provides regional, inter-regional and national LTL services through a single integrated, union-free organization.

Their service offerings, which include expedited transportation, are provided through an expansive network of service centers located throughout the continental United States.

The Company also maintains strategic alliances with other carriers to provide LTL services throughout North America.

In addition to its core LTL services, the Company offers a range of value-added services including container drayage, truckload brokerage and supply chain consulting.

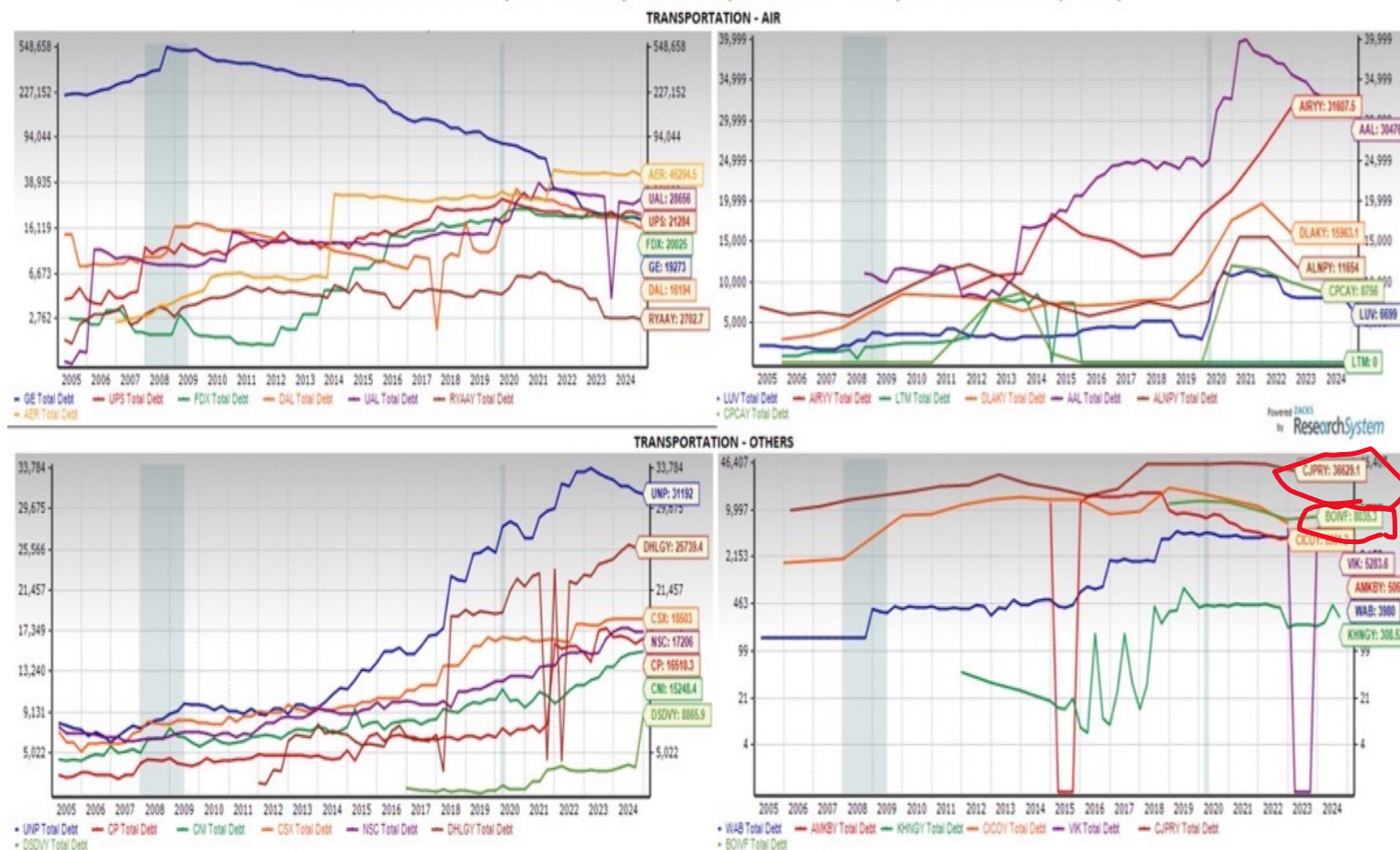




# Total Debt Charts for Top 15 Stocks by Market Cap

From the 2 Industry Groups in "Transportation"

Total Debt Charts for Top 15 Stocks by Market Cap., from the "Transportation" Industry Groups



**Central Japan Railway Company (CJPY)** operates Tokaido Shinkansen, transportation artery linking metropolitan areas of Tokyo, Nagoya, and Osaka.

The company also operates a network of conventional lines centered on the Nagoya and Shizuoka areas.

In addition, the company provides bus services, as well as logistics, travel agency, advertising, construction and construction consulting, linen supply, track maintenance, and rolling stock and machinery maintenance services.

Further, it involves in the department store operations; wholesale and retail of food and beverages; sale and lease of real estate; hotel business; and development, improvement, and maintenance of computer systems.

Central Japan Railway Company is headquartered in Nagoya, Japan.

**Bollore SE (BOIVF)** engages in the transportation and logistics, communications and electricity storage solutions businesses.

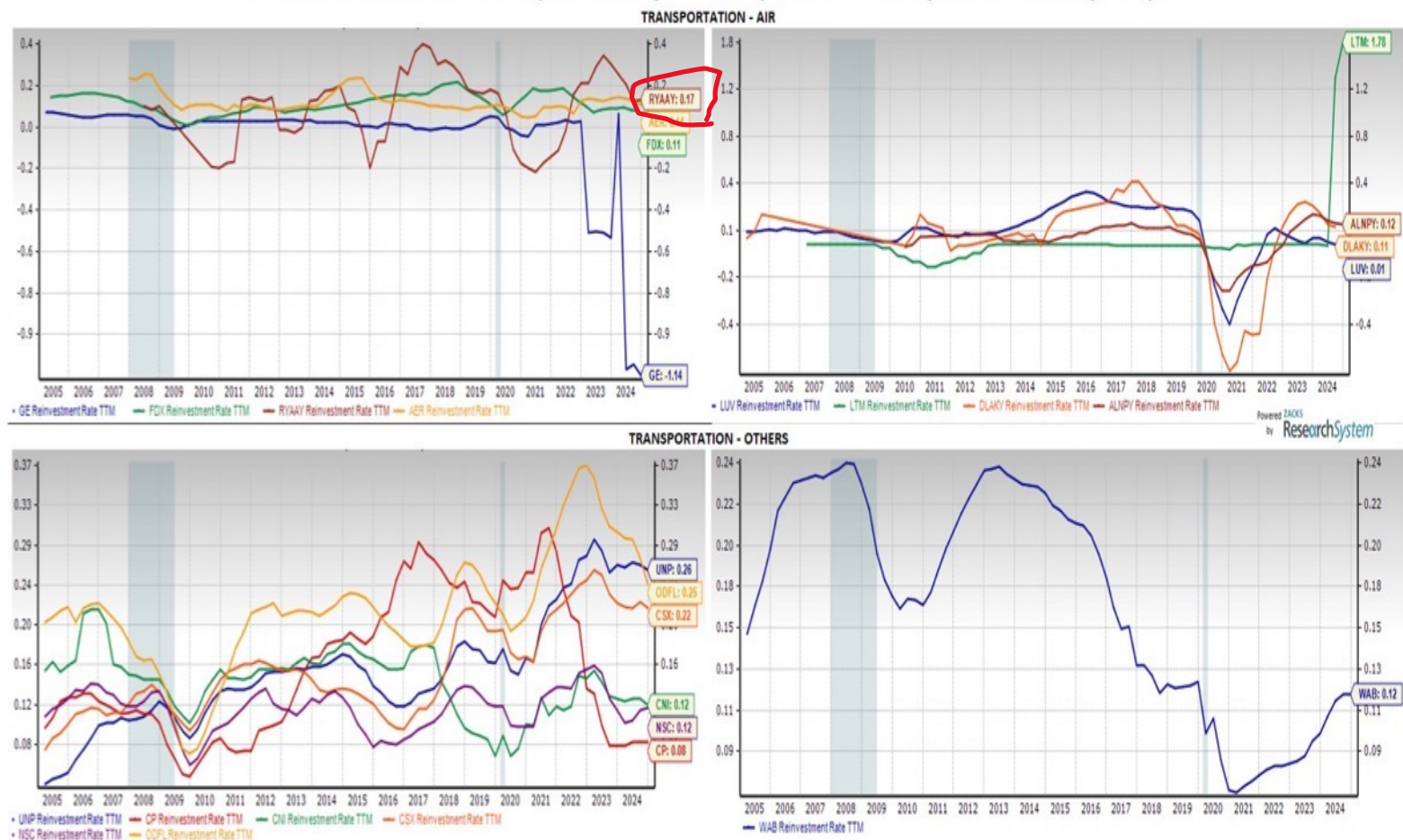
It operates principally in Europe, Africa, the Americas, the Asia-Pacific and internationally.

Bollore SE is based in Puteaux, France.

# Reinvestment Rate for the Top 15 Stocks by Market Cap

From the 2 Industry Groups in "Transportation"

Reinvestment Rate Charts for Top 15 Stocks by Market Cap., from the "Transportation" Industry Groups



**Ryanair Holdings (RYAAY)** is the parent company of Ryanair Designated Activity Company (formerly known as Ryanair Limited).

Ryanair is an ultra-low fare carrier that offers scheduled-passenger airline service in Ireland, the UK, Continental Europe, Morocco and Israel.

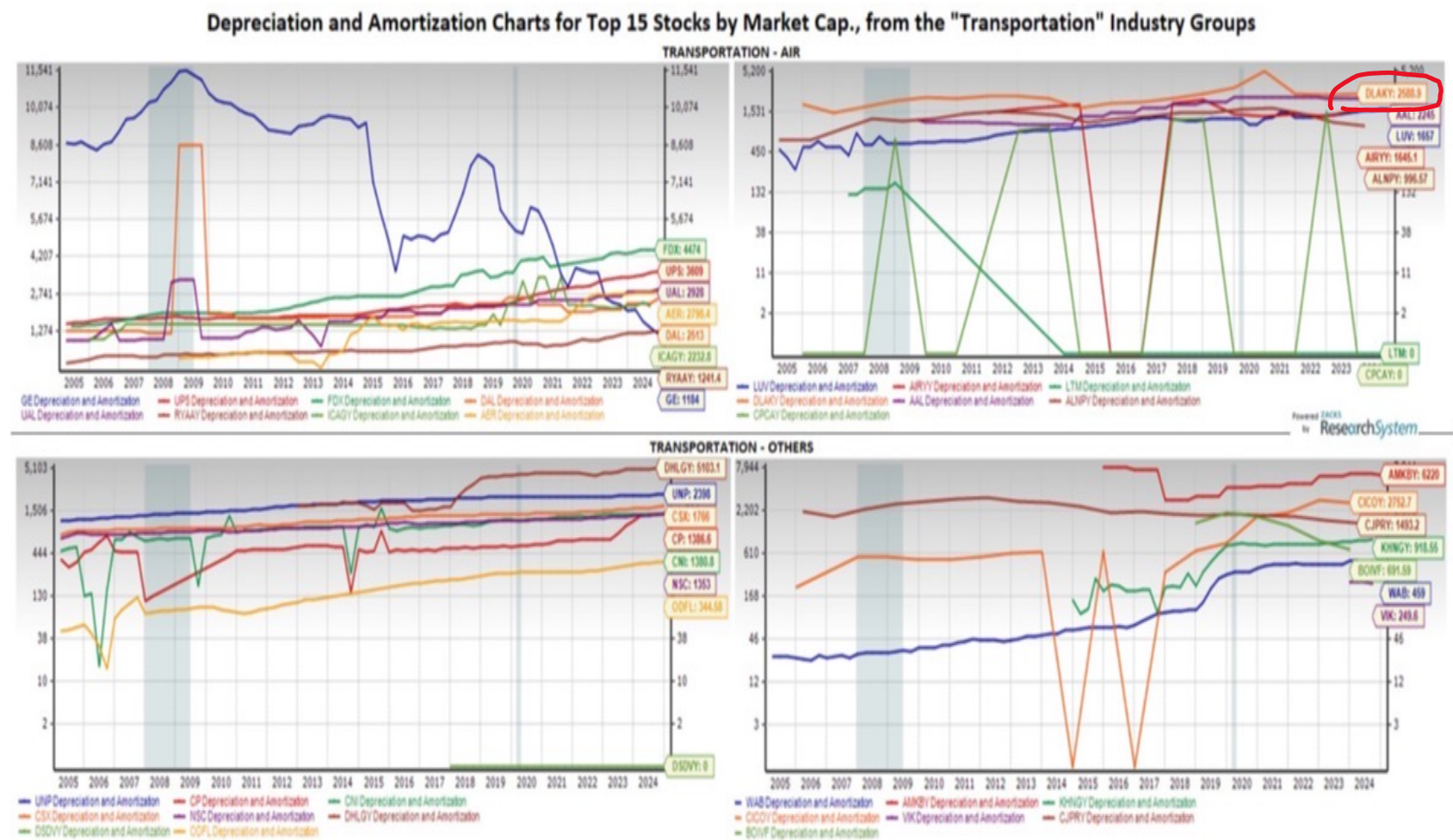
Also, it serves short-haul, point-to-point routes.





# Depreciation and Amortization Charts for Top 15 Stocks by Market Cap

From the 2 Industry Groups in: "Transportation"



## Deutsche Lufthansa (DLAKY)

**Lufthansa German Airlines** operates as an autonomous unit within the Lufthansa Group.

It maintains its own stations, handling check-in, ticket sales and other services at all the major international airports.

Lufthansa is a founding member of the Star Alliance, the world's first multilateral airline grouping.





## Part Two: Top Stocks by Max. Number of Analysts

*What broad current conditions should traders and investors be made aware of?*

# Price, EPS Consensus, and EPS Surprise Charts for Top 8 Stocks

*By the maximum # of analysts covering these stocks from the 2 Industry Groups in "Transportation"*

Price, EPS Consensus and EPS Surprise Charts for Top 8 Stocks by Max., # of Analysts covering these Stocks from the "Transportation" Industry Groups



**Southwest Airlines (LUV)** is a passenger airline that provides scheduled air transportation in the United States.

**Southwest Airlines** provides short-haul, high frequency, point-to-point and low-fare services.

The company's point-to-point route structure includes services to and from many secondary or downtown airports such as Dallas Love Field, Houston Hobby, Chicago Midway, Baltimore-Washington International and Ft. Lauderdale-Hollywood.

The company also offers long-haul nonstop service between markets like Oakland and Orlando, Los Angeles and Nashville, Las Vegas and Orlando, San Diego and Baltimore, Houston and New York LaGuardia, Los Angeles and Tampa, Oakland and Baltimore, San Diego and Newark.

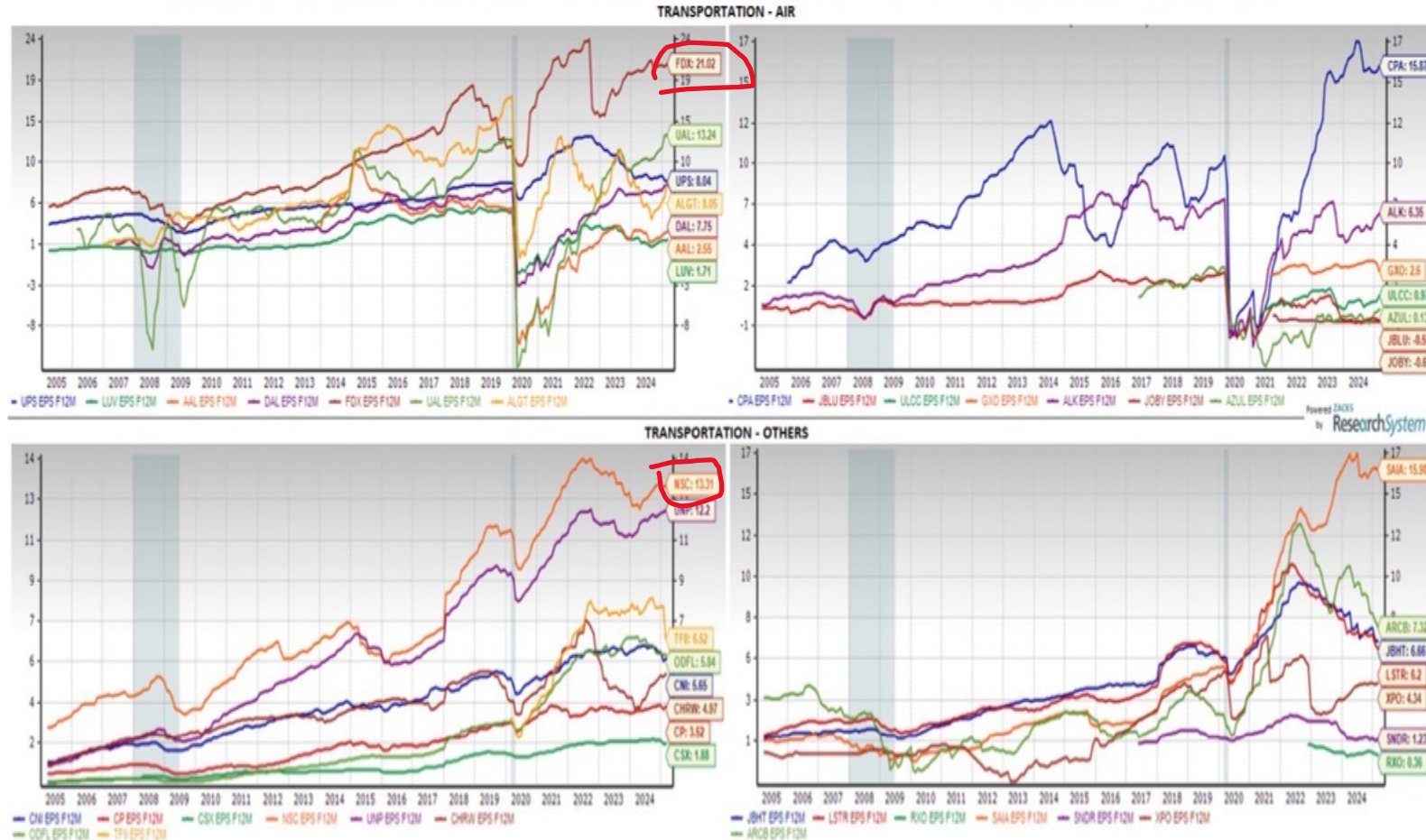
**Canadian Pacific Kansas City (CP)** provides customers unparalleled rail service and network reach to key markets across the continent.

**Canadian Pacific Kansas City**, formerly known as Canadian Pacific, is headquartered in Calgary, Alta.

# EPS F12M Charts

EPS F12M Charts for Top 15 Stocks by Max # of Analysts from these 2 "Transportation" Industry Groups

EPS F12M Charts for Top 15 Stocks by Max., # of Analysts covering these stocks from the "Transportation" Industry Groups



**FedEx Corporation (FDX)** is the leader in global express delivery services. The company provides a broad portfolio of transportation, e-commerce and business services through companies competing collectively, operating independently and managed collaboratively, under the FedEx brand.

The company is currently reporting, primarily through the FedEx Express (including TNT Express acquired in 2016), FedEx Ground and FedEx Freight segments.

FedEx Express offers time-definite delivery to more than 220 countries and territories, connecting markets that comprise almost the entire gross domestic product of the world.

**Norfolk Southern Corporation (NSC)** controls a major freight railroad, Norfolk Southern Railway Company. The company is primarily engaged in the rail transportation of raw material, intermediate products and finished goods, primarily in Southeast, East and Midwest United States and, via interchange with rail carriers to and from the rest of country.

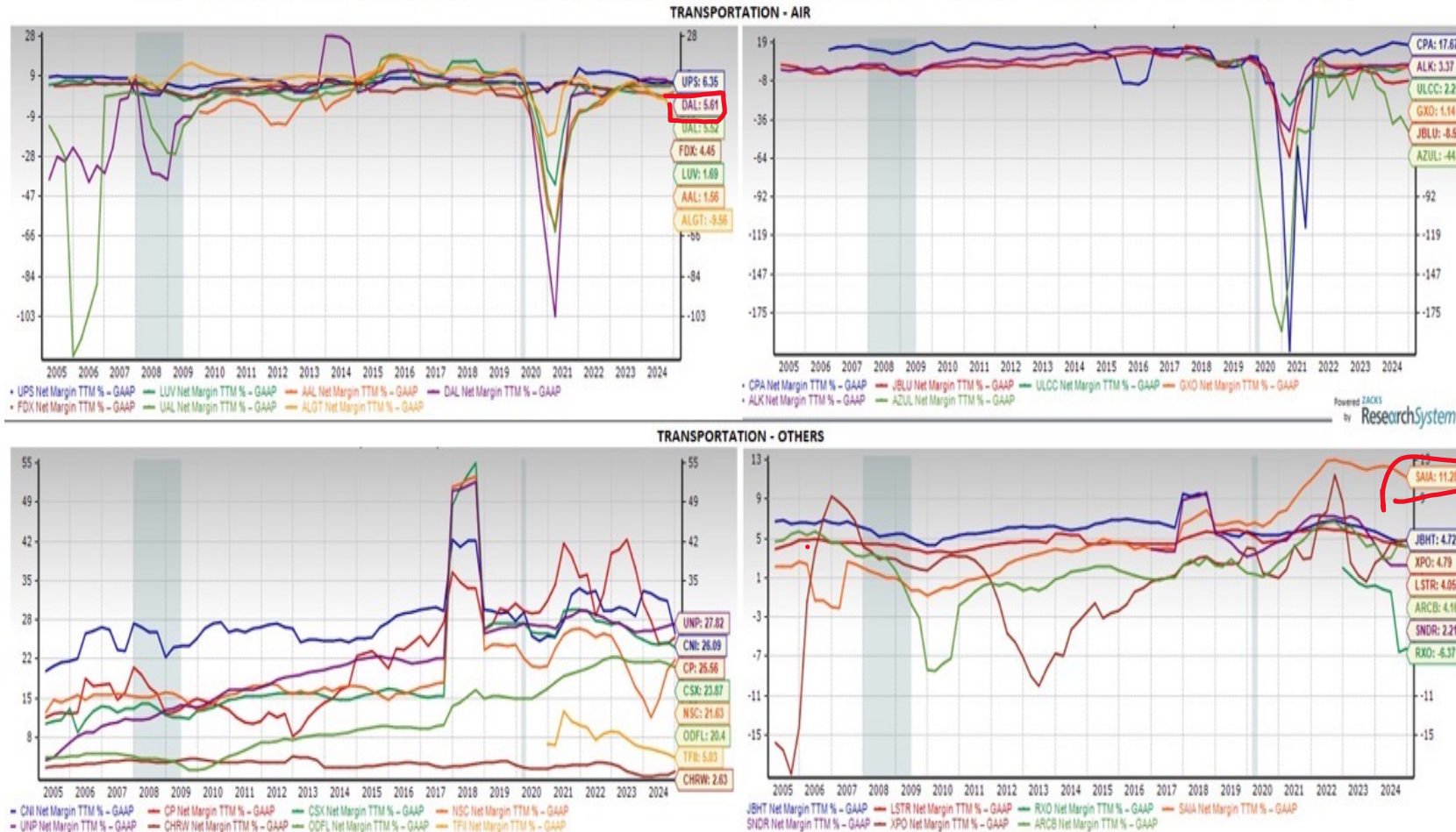
Norfolk Southern also transports overseas freight through several Atlantic and Gulf Coast ports. Norfolk Southern provides comprehensive logistics services and offers the most extensive intermodal network on the eastern side of the United States.



# Net Margin TTM % for Top 15 Stocks

For Top 15 Stocks by Max. # of Analysts Covering These Stocks from the 2 "Transportation" Industry Groups

Net Margin TTM % Charts for Top 15 Stocks by Max. # of Analysts covering these stocks from the "Transportation" Industry Groups



**Delta Air Lines (DAL)** is one of the four carriers that controls majority of the US aviation market (the carriers account for more than 60% of the domestic market share).

Bulk of this Atlanta-GA based carrier's revenues are recognized from its airline segment.

Balance is represented by the refinery segment, which operates for the benefit of the airline division by providing it with jet fuel from its own production and agreements with third parties.

**Saia Inc. (SAIA)**, is a leading multi-regional less-than-truckload (LTL) carrier. It is a leading transportation company that provides a variety of trucking transportation and supply chain solutions to a broad range of industries, including the retail, petrochemical and manufacturing industries.

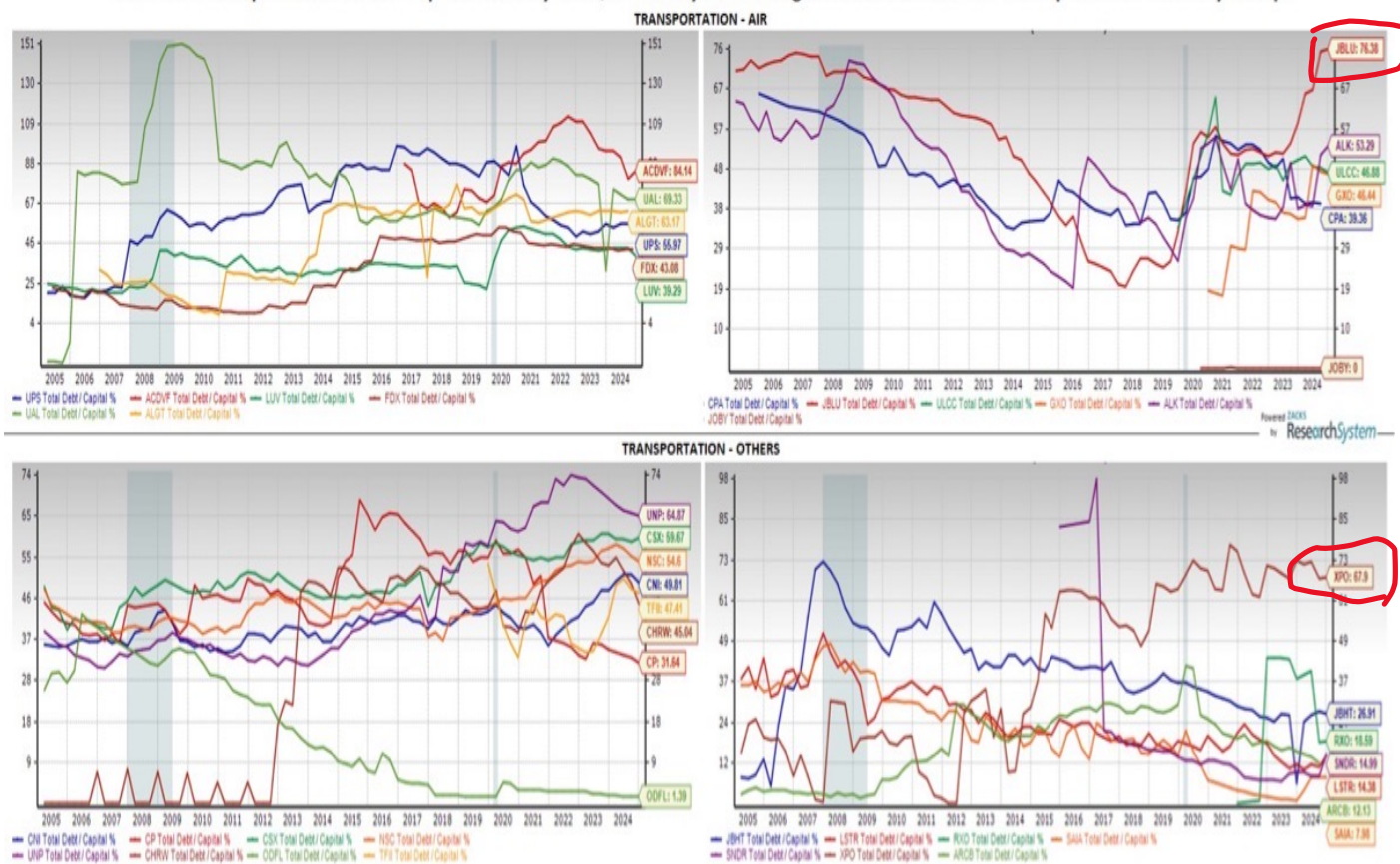
Saia Inc., serves a wide variety of customers by offering regional, interregional and national LTL services and selected TL services across the United States. It offers customers a wide range of less-than-truckload, non-asset truckload, and logistic services.

Saia LTL Freight operates 152 terminals in 38 states and is headquartered in Johns Creek, Georgia.

# Total Debt to Capital % Charts

For Top 15 Stocks by Max. # of Analysts Covering These Stocks from these 2 "Transportation" Industry Groups

Total Debt to Capital % Charts for Top 15 Stocks by Max. # of Analysts covering these stocks from the "Transportation" Industry Groups



**JetBlue Airways Corporation (JBLU)** is a passenger airline. The low-cost carrier operates primarily on point-to-point routes.



**XPO Inc.(XPO)** is a provider of asset-based less-than-truckload transportation principally in North America, with proprietary technology which moves goods efficiently. XPO Inc., formerly known as XPO LOGISTICS, is headquartered in Greenwich, Conn.

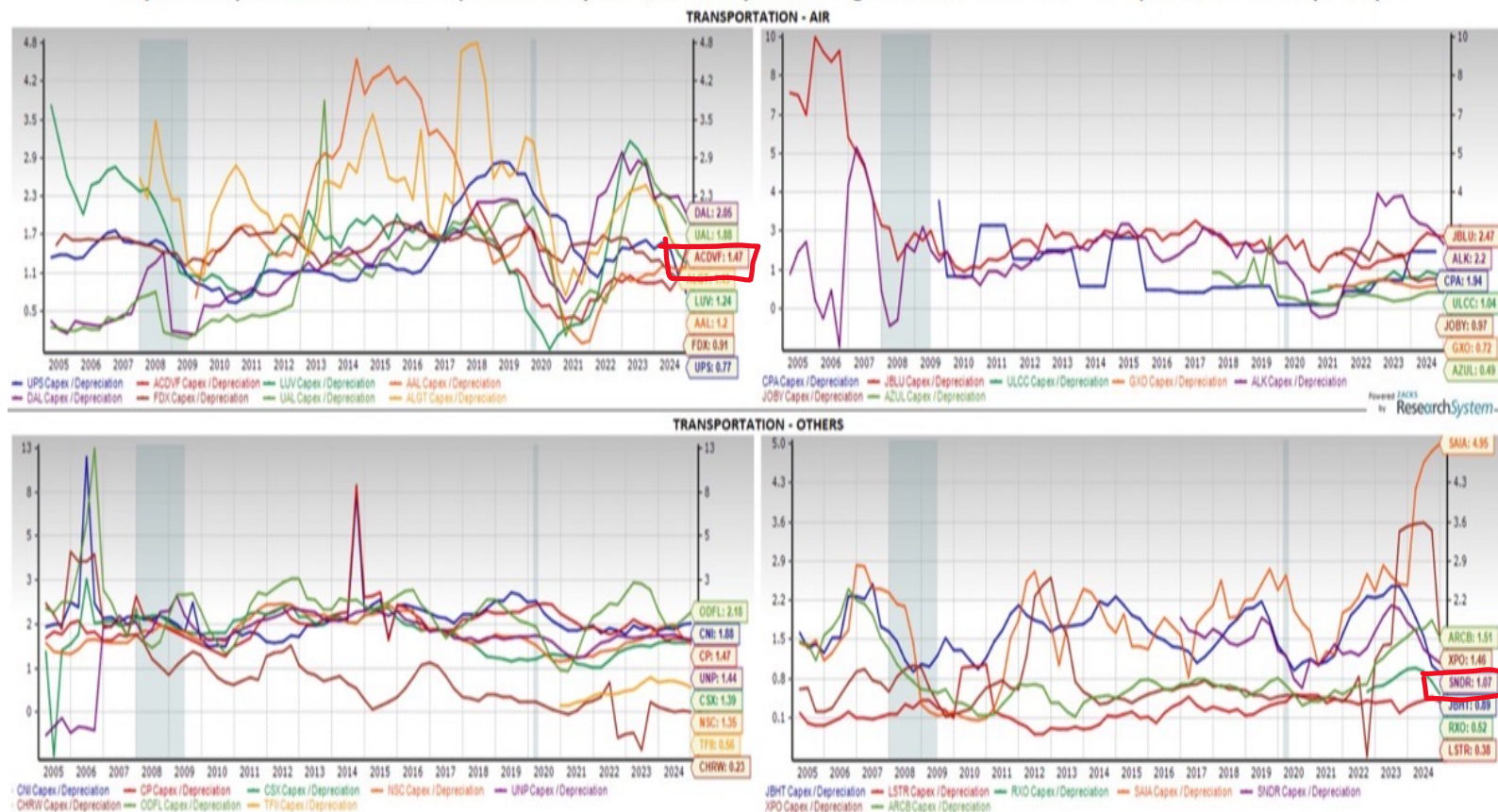




# Capex to Depreciation Charts by Max # of Analysts

From the 2 "Transportation" Industry Groups

Capex to Depreciation Charts for Top 15 Stocks by Max., # of Analysts covering these stocks from the "Transportation" Industry Groups



**Air Canada (ACDVF)** provides airline and scheduled passenger services primarily in the Canadian market, the Canada-U.S. transborder market and in the international market to and from Canada.

It operates primarily in Canada, the United States, Europe, Asia, the Middle East and the Caribbean. Air Canada is based in Montreal, Canada.

**Schneider National (SNDR)** is a leading transportation and logistics services company. The company offers a portfolio of premier truckload, intermodal and logistics solutions.

Additionally, **Schneider National** operates one of the largest for-hire trucking fleets in North America.

The company's offerings include dry van, bulk transport, intermodal and supply chain management. The company operates through the truckload, intermodal and logistics segments.





Part Three:

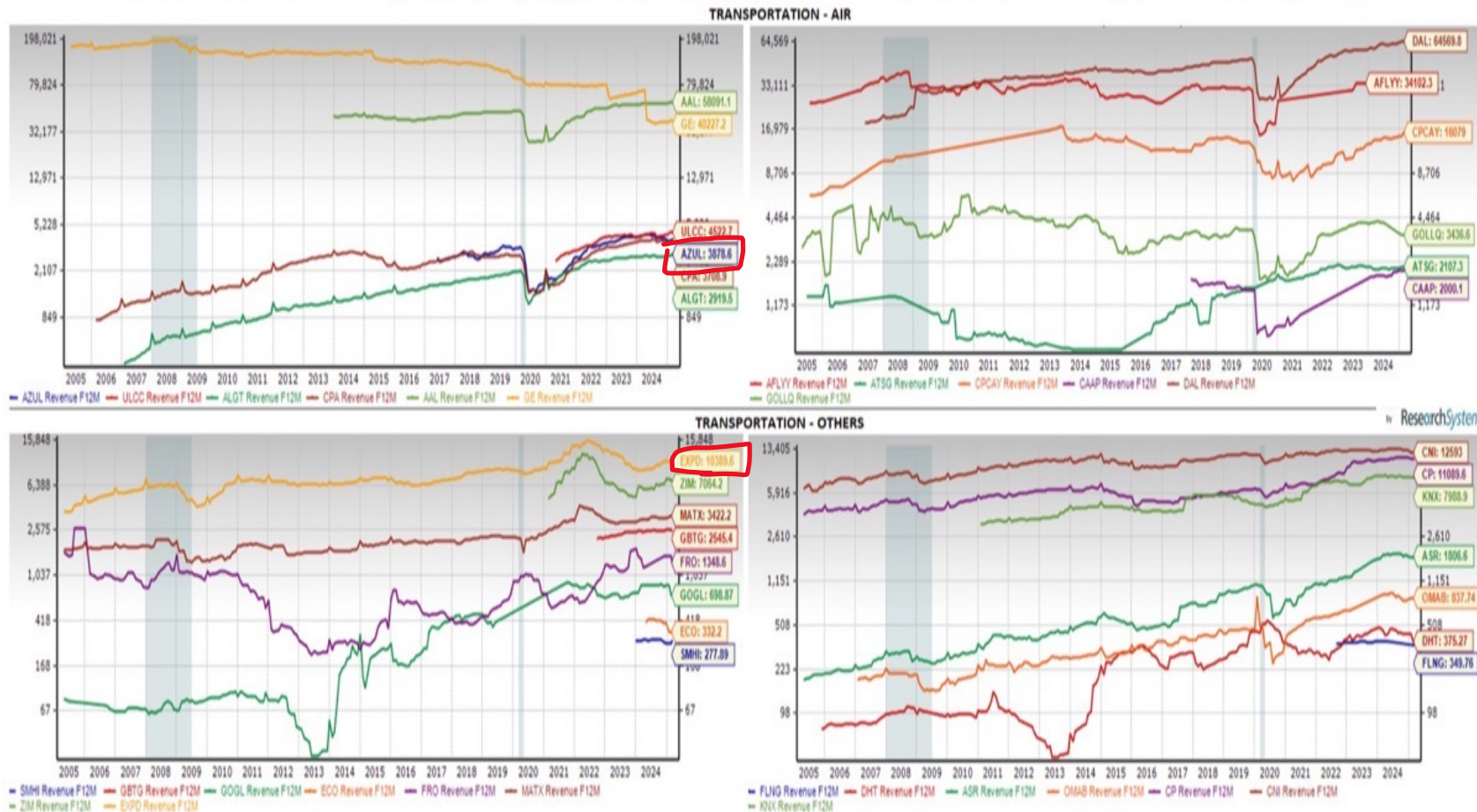
Top Stocks by Largest 1 Month % Change  
in Current Fiscal Year F1 EPS Estimates

*What broad current conditions should traders and investors be made aware of?*

# Revenue F12M Charts

For Top 15 Stocks by Largest 1 Month % Change in Current Fiscal Yest F1 EPS Estimate from the 2 "Transportation" Industry Groups

Revenue F12M Charts for Top 15 Stocks by Largest 1 Month % Change in F1 EPS Estimate from the "Transportation" Industry Groups



**Azul (AZUL)** is one of the largest airlines in Brazil in terms of departures and destinations covered, offering flights to every region in Brazil.

The carrier intends to expand globally through code-share agreements with other carriers.

The airline has code-share agreements with several international carriers such as United Airlines, JetBlue, Copa Airlines, Etihad Airways, TAP, Turkish Airlines, Ethiopian Airlines, Aigle Azur and Beijing Capital.

The code-share partnerships with United and TAP will help the company in expanding its network across United States, Europe and Asia.

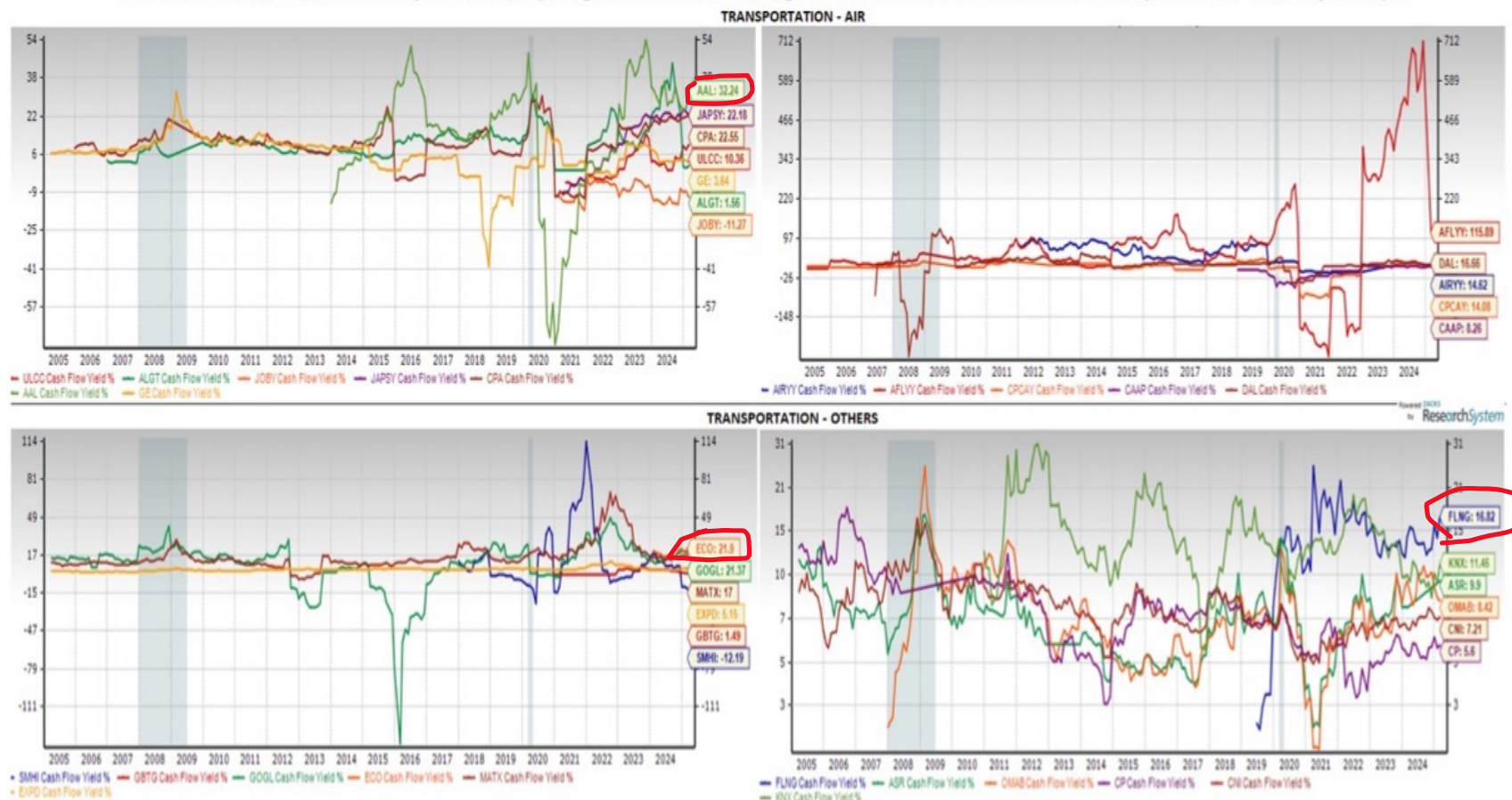
**Expeditors International of Washington Inc. (EXPD)** is a leading third-party logistics provider.

The company, based in Seattle, WA, is engaged in the business of global logistics management, including international freight forwarding and consolidation, for both air and ocean freight.

# Cash Flow Yield % Charts

For Top 15 Stocks by Largest 1 Month % Change in Current Fiscal Yest F1 EPS Estimate from the 2 "Transportation" Industry Groups

Cash Flow Yield % Charts for Top 15 Stocks by Largest 1 Month % Change in F1 EPS Estimate from the "Transportation" Industry Groups



**American Airlines Group Inc. (AAL)** is the largest airline internationally.

This Delaware corporation's wholly-owned subsidiaries are American Airlines, Envoy Aviation Group, PSA Airlines and Piedmont Airlines.

**Okeanis Eco Tankers Corp. (ECO)** is an international tanker company providing seaborne transportation of crude oil and refined products.

Okeanis Eco Tankers Corp. is based in ATHENS, Greece.

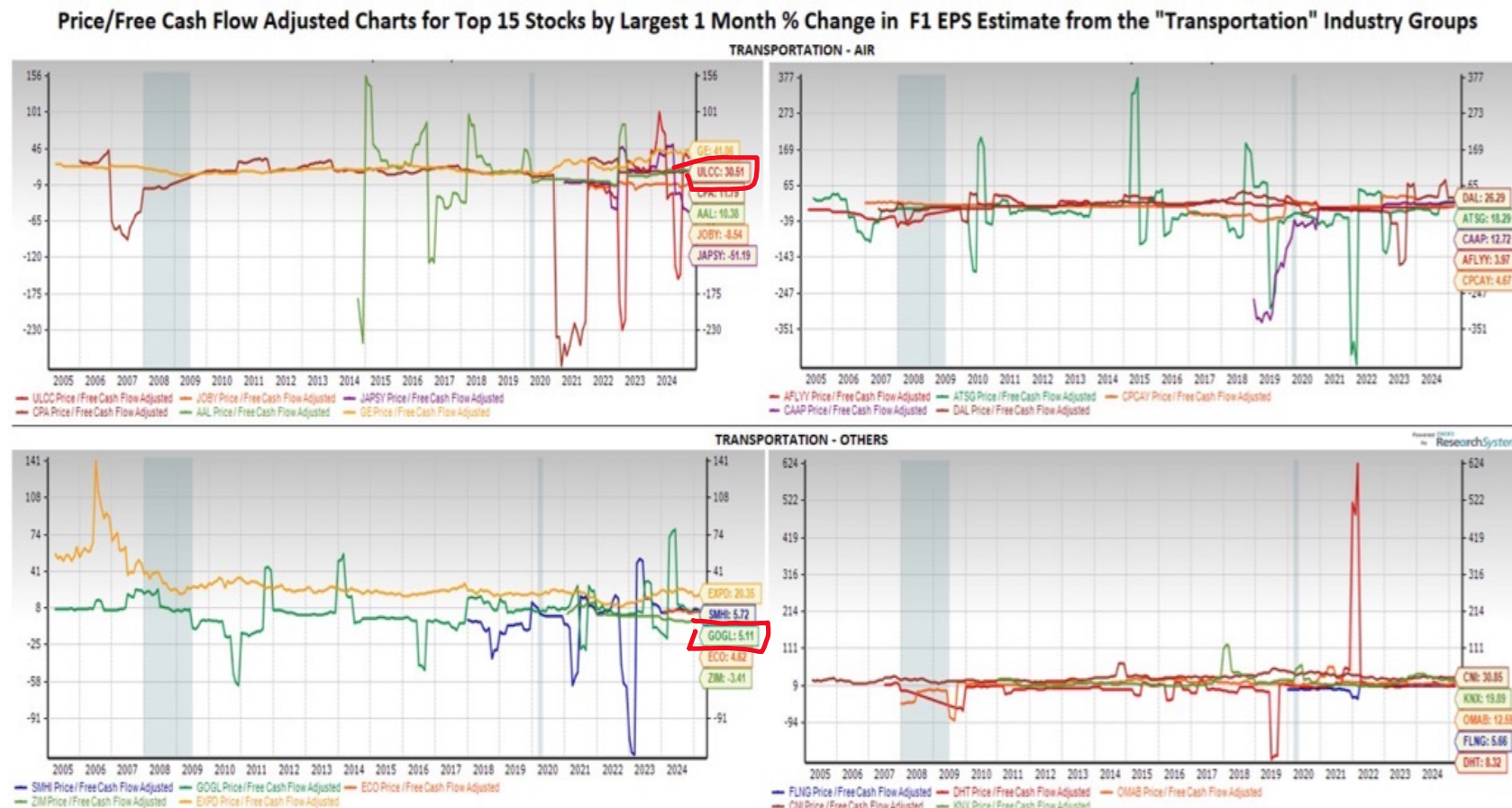
**FLEX LNG Ltd. (FLNG)** is a shipping company. It is focused on transportation of liquefied natural gas.

FLEX LNG Ltd. is based in HAMILTON, Bermuda.



# Price/Free Cash Flow

For Top 15 Stocks by Largest 1 Month % Change in F1 EPS from the 2 Utility Industry Groups



**Frontier Group Holdings Inc. (ULCC)** operates family aircraft. Frontier Group Holdings Inc. is headquartered in Denver, Colorado.

**Golden Ocean Group Limited (GOGL)** is a shipping company which engaged in the transportation of dry bulk cargoes.

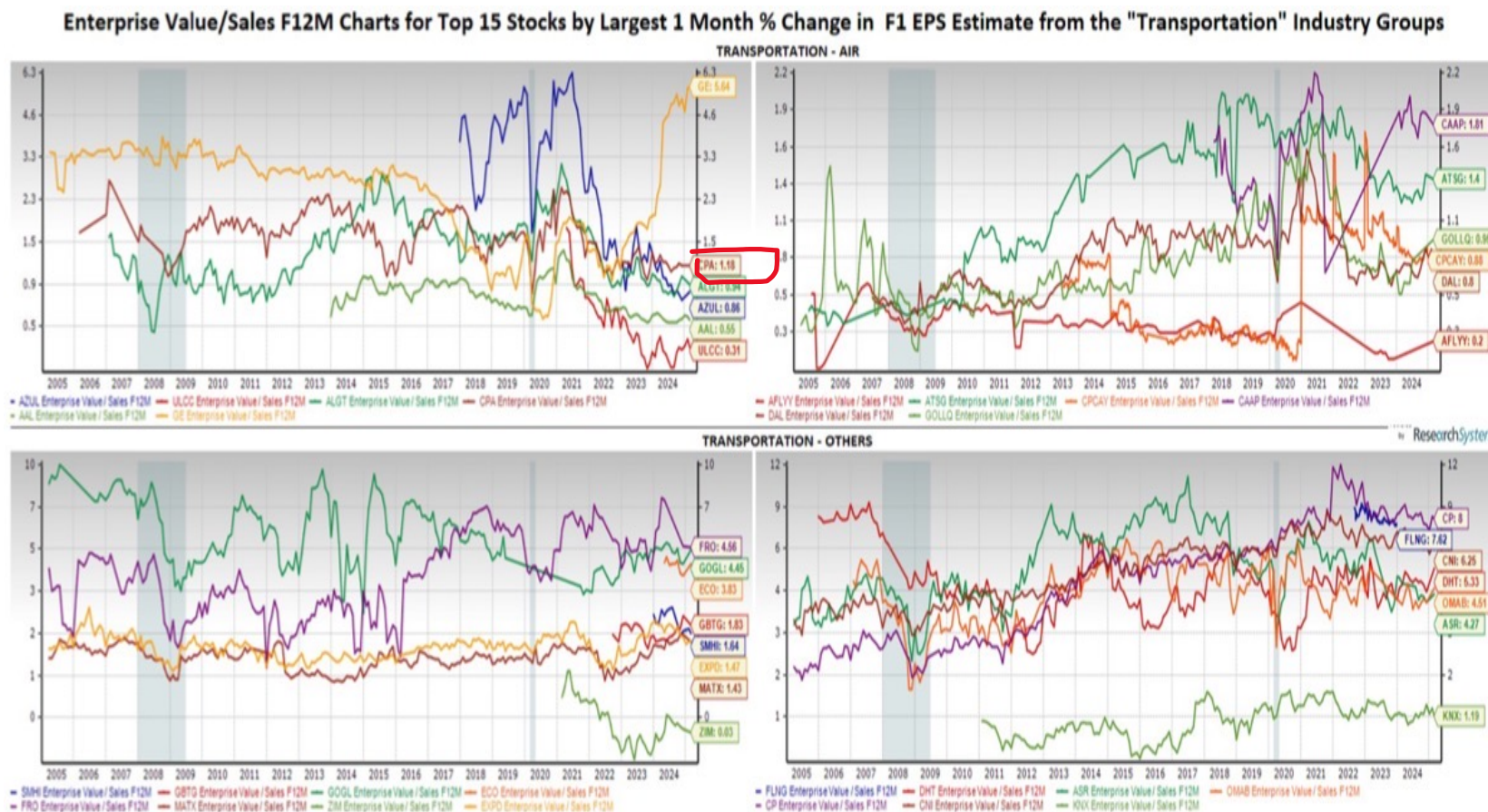
It operates primarily in the Capesize and Panamax market.

Golden Ocean Group Limited, formerly known as Knightsbridge Shipping Limited, is based in HAMILTON, Bermuda.

# Enterprise Value/Sales F12M Charts

For Top 15 Stocks

by Largest 1 Month % Change in Current Fiscal Yest F1 EPS Estimate from the 2 "Transportation" Industry Groups



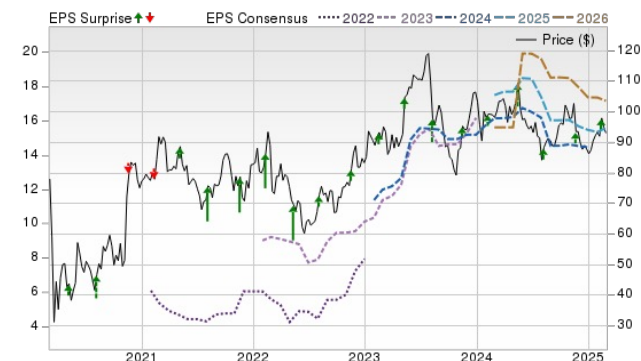
**Copa Holdings (CPA)** through its main subsidiaries Copa Airlines and Copa Colombia, offers airline passenger and cargo services.

On a daily basis, the company currently operates scheduled flights and flies to destinations covering countries in North, Central, South America and the Caribbean from its Panama City hub.

Passengers of the carrier also have access to flights serving many more destinations, courtesy of its code-share arrangements with **United Airlines** among other carriers.

The company launched its own frequent flyer program in a bid to boost its relationship with customers. The move followed its decision to stop co-branding the MileagePlus frequent flyer program in Latin America.

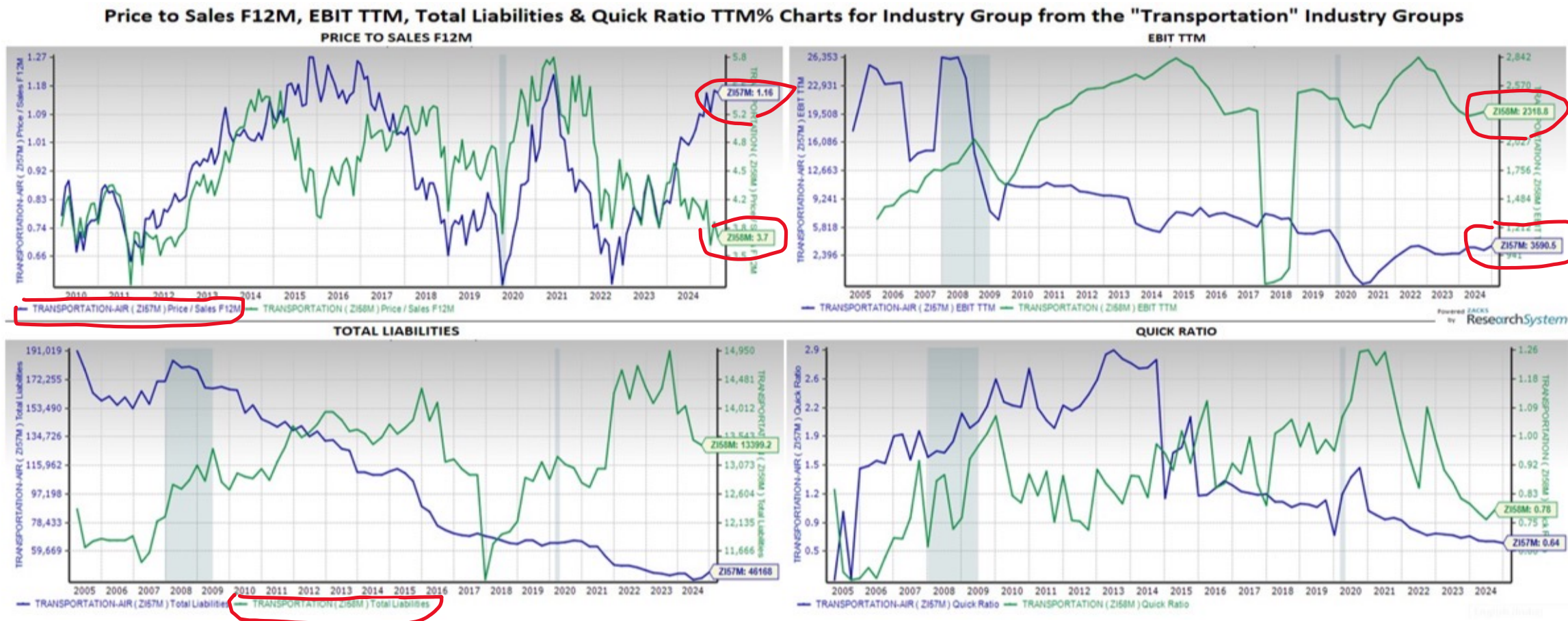
Copa Holdings is constantly looking to modernize its fleet. The planes are equipped with modern facilities aimed at promoting safety, enhancing flying experience etc. Moving ahead, the company aims to increase its fleet size





# Price to Sales F12M, EBIT TTM, Total Liabilities, & Quick Ratio

For Industry Groups from these "Transportation" Industry Groups: *Transportation - Air* and *Transportation - Other*

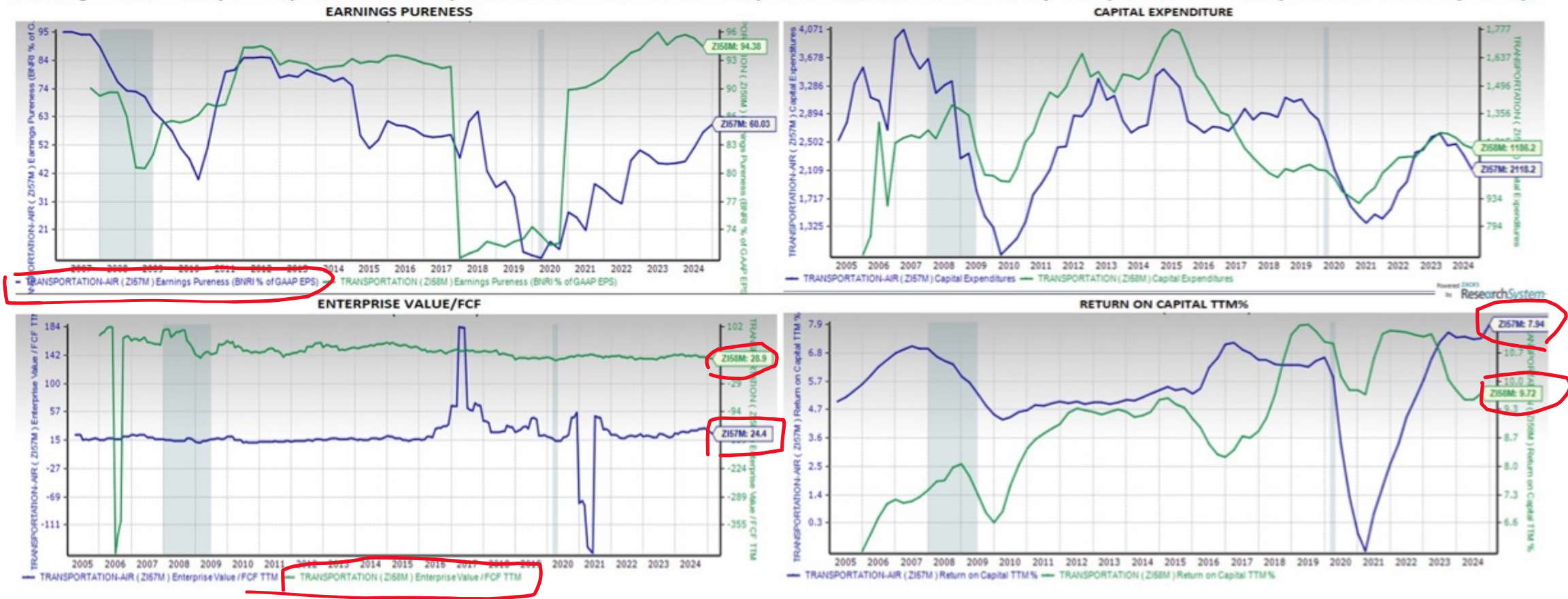




# Earnings Pureness, Capital Expenditure, and Enterprise Value/FCF, & Return on Capital TTM%

For Industry Groups from these "Transportation" Industry Groups: *Transportation - Air* and *Transportation - Other*

Earning Pureness, Capital Expenditure, Enterprise Value/FCF & Return on Capital TTM% Charts for Industry Group from the "Transportation" Industry Groups



# Thank You for Attending!

---

**John Blank, PhD**

Zacks Chief Equity Strategist and Economist

Zacks Professional Services

866-794-6065

strategycall@zackspro.com

www.zackspro.com



Zacks Professional Services



@ZATools