

Disclosures

The views of John Blank, PhD are not necessarily the views of Zacks Investment Research. Past performance is no guarantee of future results. Inherent in any investment is the potential for loss. This material is being provided for informational purposes only and nothing herein constitutes investment, legal, accounting or tax advice, or a recommendation to buy, sell or hold a security. No recommendation or advice is being given as to whether any investment is suitable for a particular investor. It should not be assumed that any investments in securities, companies, sectors or markets identified and described were or will be profitable. All information is current as of the date herein and is subject to change without notice. Any views or opinions expressed may not reflect those of the firm as a whole. Zacks Investment Research is not a licensed securities dealer, broker or US investment adviser or investment bank.

A Deep Dive into the Magnificent 7 Stocks

The 2025 All-Star Company is NVIDIA!

The 2025 All-Star Stock is Tesla.

Presented by:

John Blank, PhD

Zacks Chief Equity Strategist and Economist

06/16/2025

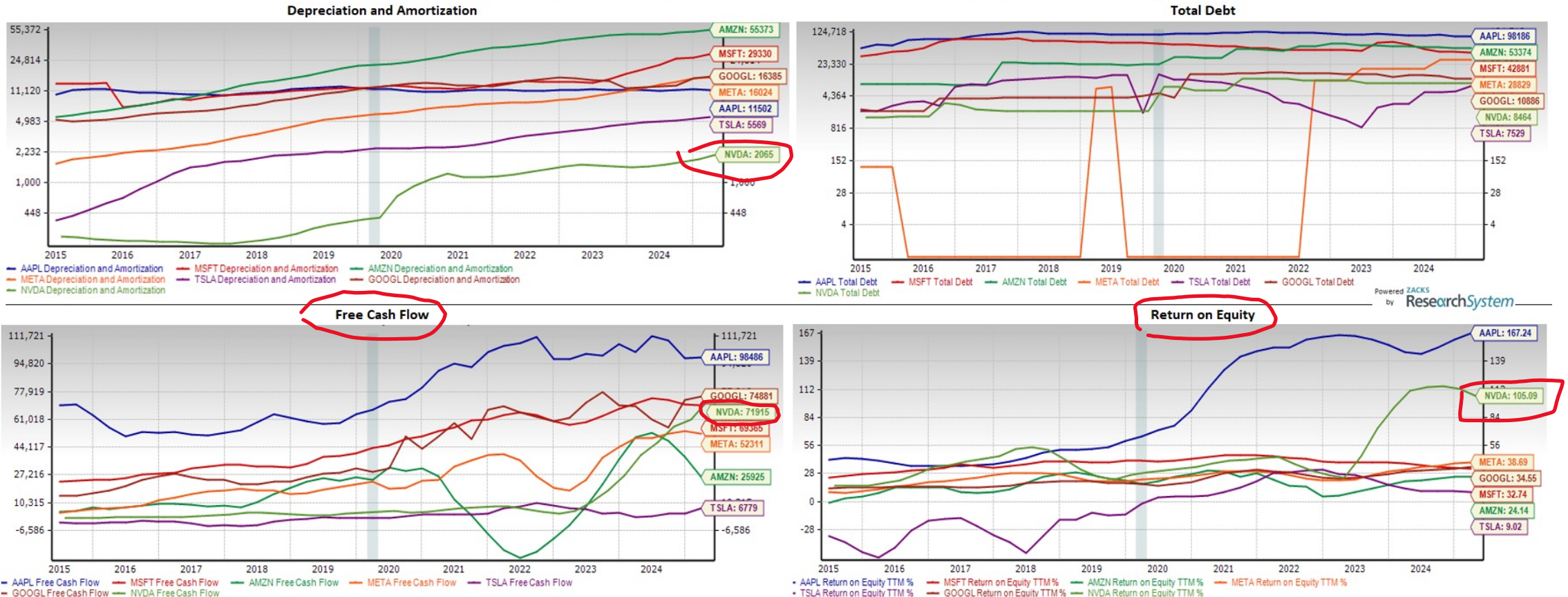


Depreciation & Amortization, Total Debt, Free Cash Flow & Return on Equity Charts

For the Magnificent 7 Stocks...

NVDA stands out!

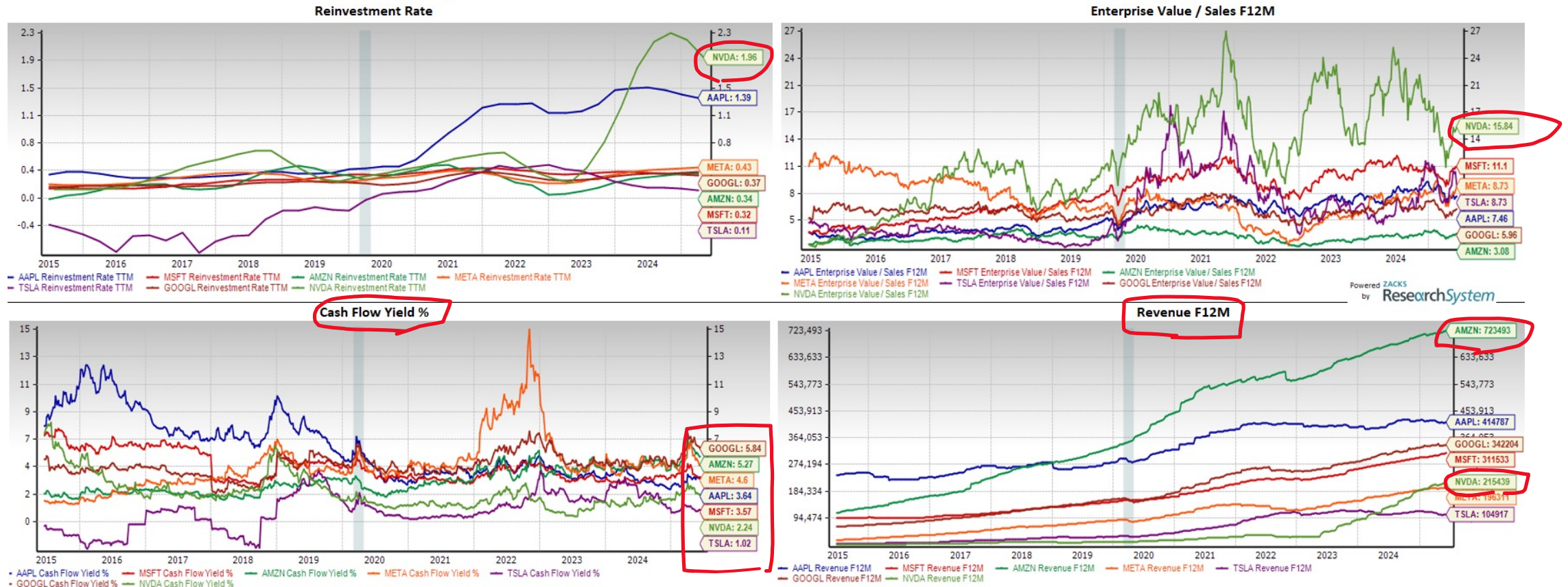
Depreciation & Amortization, Total Debt, Free Cash Flow & Return on Equity Charts for Magnificent 7 stocks



Reinvestment Rate, Enterprise Value/Sales F12M, Cash Flow Yield % & Revenue F12M Charts

For the Magnificent 7 Stocks...

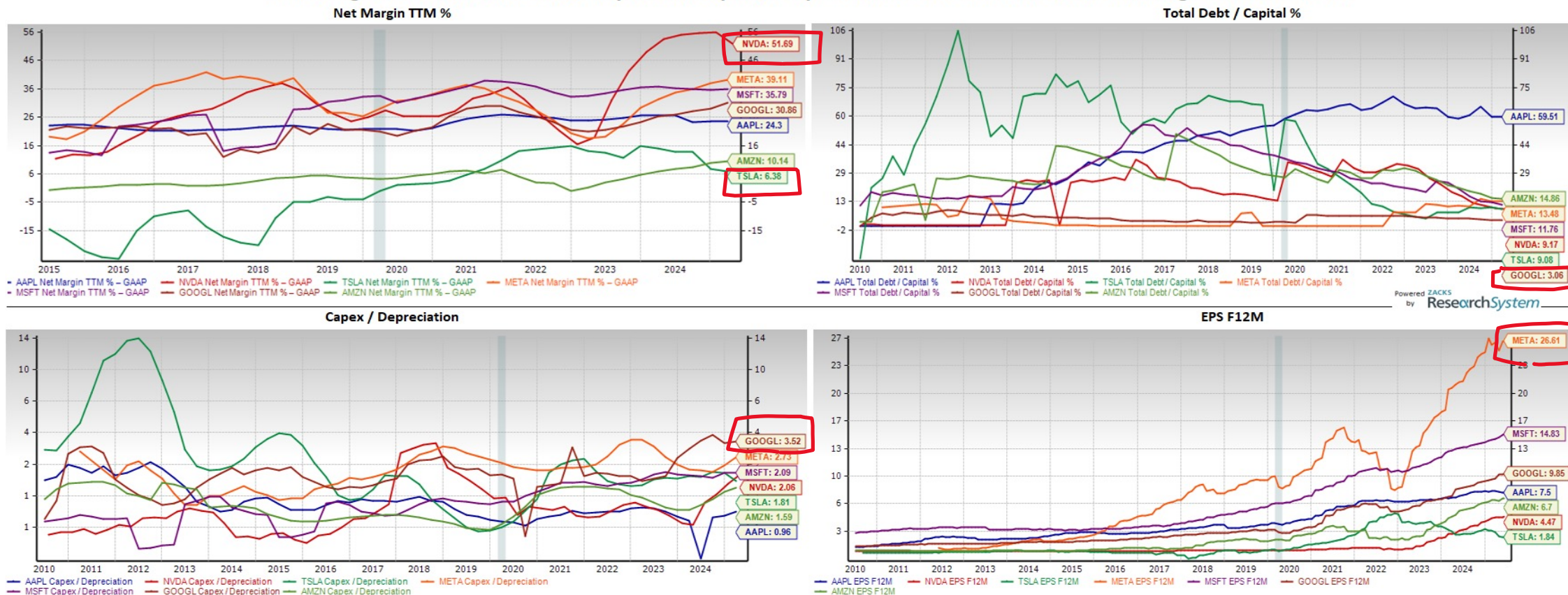
Reinvestment Rate, Enterprise Value / Sales F12M, Cash Flow Yield % & Revenue F12M Charts for Magnificent 7 Stocks



Net Margin TTM %, Total Debt/Capital %, Capex/Depreciation & EPS F12M Charts

For the Magnificent 7 Stocks...

Net Margin TTM %, Total Debt / Capital %, Capex / Depreciation & EPS F12M Charts for Magnificent 7 Stocks



Price, EPS Consensus, and EPS Surprise Charts

For the Magnificent 7 Stocks...

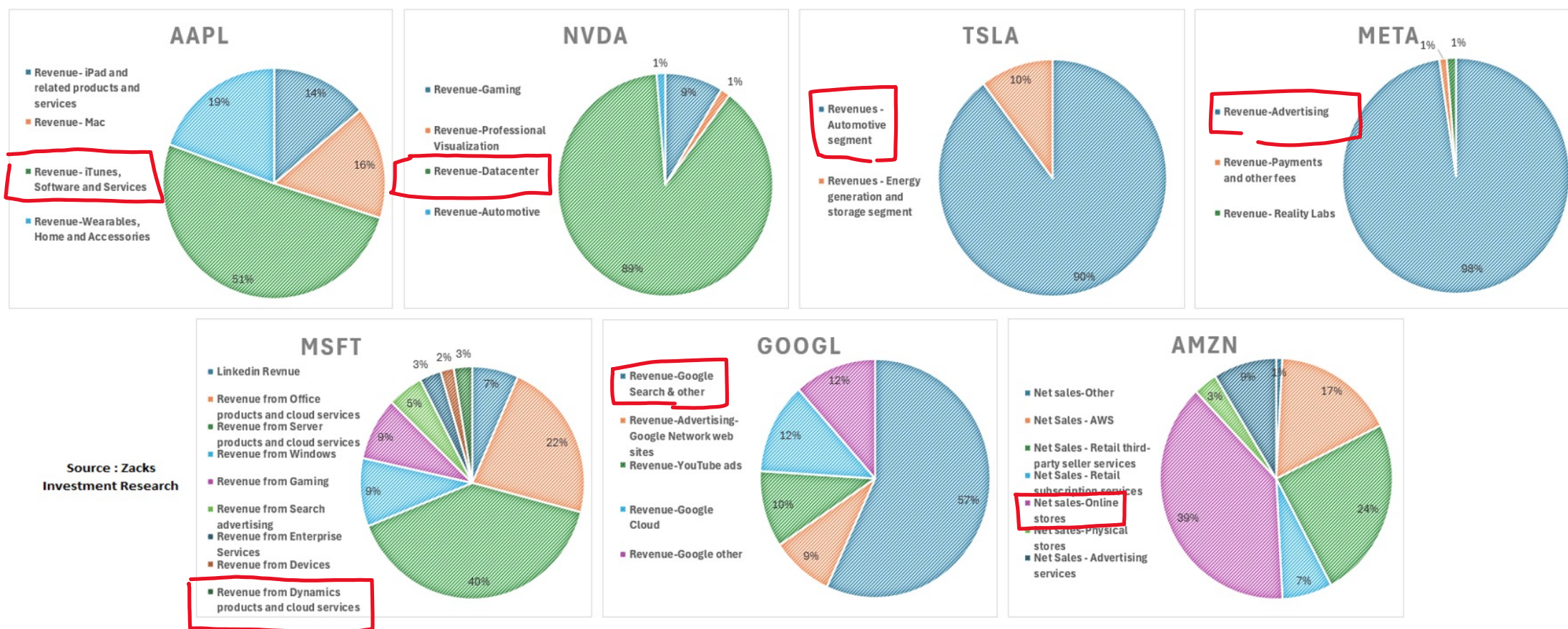
Price, EPS Consensus and EPS Surprise Charts for Magnificent 7 Stocks



Critical Product Segment Revenue Percentage Pie Charts

For the Magnificent 7 Stocks in the Year 2024

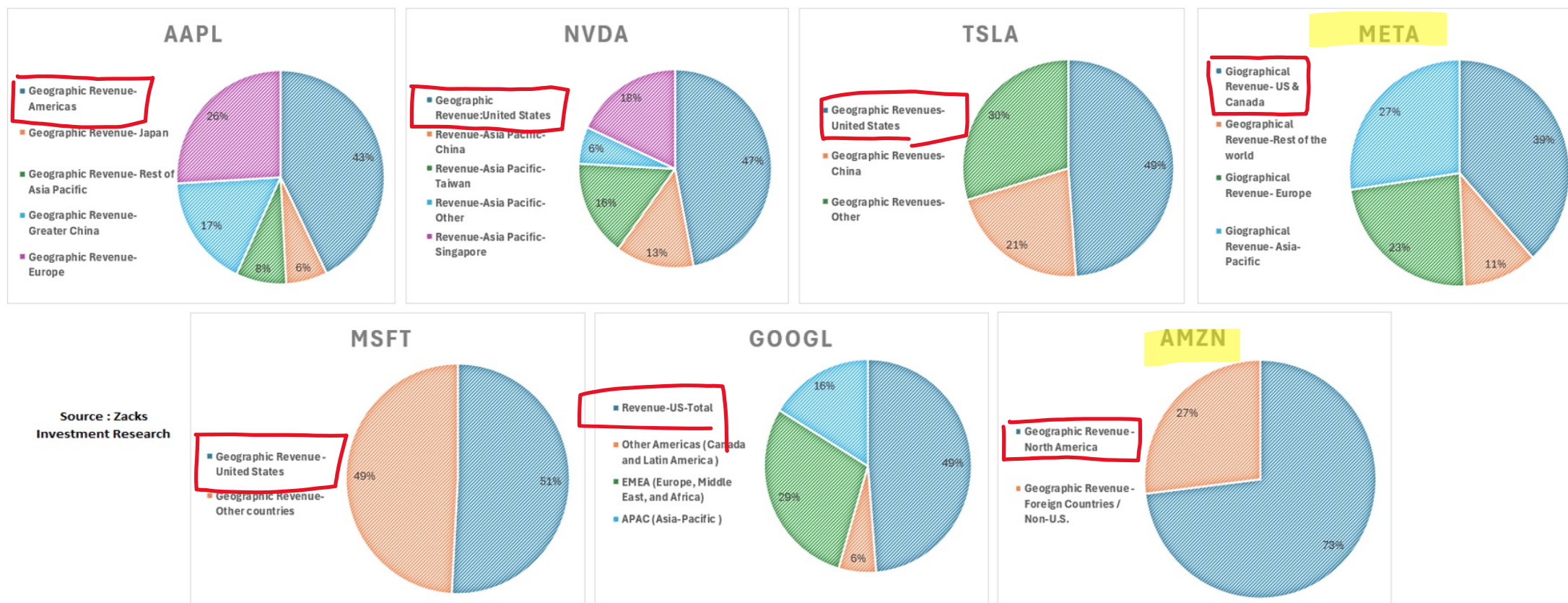
Product Segment Revenue Percentage Pie Charts for Magnificent Seven Stocks in the Year 2024



Geographical Segment Revenue Percentage Pie Charts

For the Magnificent 7 Stocks in the Year 2024

Geographical Segment Revenue Percentage Pie Charts for Magnificent Seven Stocks in the Year 2024



Mag 7

Stock Characteristics, Portfolio Return Metrics & Asset Allocation

For the Magnificent 7 Stocks -- from 06.30.17 to 05.31.25

Stock Characteristics, Portfolio Rt. Metrics & Asset Allocation - Magnificent 7 Stocks from 06/30/17 to 05/31/25

Stock Metrics for Magnificent 7 Stocks							
	NVDA	TSLA	MSFT	AAPL	META	AMZN	GOOGL
Average in %	4.80	4.61	2.26	2.15	2.13	1.89	1.58
Cumulative Returns in %	3691.27	1423.94	621.18	465.17	329.49	313.22	249.59
CAGR of Returns in %	57.52	40.56	28.01	24.17	19.98	19.41	16.94
Standard Error	1.42	2.01	0.62	0.85	1.11	0.93	0.74
Standard Dev., in %	13.80	19.63	6.06	8.24	10.83	9.06	7.24
Annualised Std., Dev., in %	47.81	68.00	20.98	28.54	37.52	31.39	25.10
Range in %	68.37	110.88	28.56	39.70	59.79	50.81	33.85
Skewness	-0.167	0.848	0.133	0.022	-0.204	0.241	-0.330
Kurtosis	-0.083	0.979	-0.265	-0.559	1.119	0.822	-0.210

Note : Period from 06/30/17 to 05/31/25

Source : Zacks
Investment Research

Variance - CoVariance Matrix							
	NVDA	TSLA	MSFT	AAPL	META	AMZN	GOOGL
NVDA	0.01905						
TSLA	0.00982	0.03854					
MSFT	0.00551	0.00516	0.00367				
AAPL	0.00653	0.00884	0.00297	0.00679			
META	0.00789	0.00618	0.00352	0.00346	0.01173		
AMZN	0.00765	0.00897	0.00378	0.00427	0.00505	0.00821	
GOOGL	0.00539	0.00591	0.00279	0.00271	0.00371	0.00416	0.00525

Note : Period from 06/30/17 to 05/31/25

Correlation Matrix							
	NVDA	TSLA	MSFT	AAPL	META	AMZN	GOOGL
NVDA	1.00000						
TSLA	0.36256	1.00000					
MSFT	0.65986	0.43423	1.00000				
AAPL	0.57397	0.54648	0.59610	1.00000			
META	0.52788	0.29050	0.53740	0.38781	1.00000		
AMZN	0.61177	0.50422	0.68833	0.57233	0.51443	1.00000	
GOOGL	0.53924	0.41552	0.63682	0.45383	0.47240	0.63429	1.00000

Weights Assigned to each of the 7 Stocks in %							
Table 3	NVDA	TSLA	MSFT	AAPL	META	AMZN	GOOGL
Portfolio 1 - Equal Weights	14.29	14.29	14.29	14.29	14.29	14.29	14.29
Portfolio 2	20.00	15.00	10.00	14.00	12.00	13.00	16.00
Portfolio 3	12.00	22.00	10.00	15.50	12.00	10.50	18.00

Monthly Portfolio Return charts for 3 Portfolios formed by assigning weights as in Table 3



Portfolio Metrics : Portfolios formed by assigning Weights for Magnificent 7 Stocks from 06/30/17 to 05/31/25

Portfolio Metrics	Weights in %		
	14.29 - Equal Weighted	20 - 15 - 10 - 14 - 12 - 13 - 16	12 - 22 - 10 - 15.5 - 12 - 10.5 - 18
Average in %	2.77	2.93	2.89
Cumulative Returns in %	924.60	1057.64	992.13
CAGR of Returns in %	33.76	35.81	34.83
Standard Error	0.83	0.87	0.89
Standard Dev., in %	8.10	8.45	8.70
Annualised Std., Dev., in %	28.07	29.27	30.15
Range in %	41.23	43.73	45.82
Skewness	0.042	0.022	0.217
Kurtosis	-0.096	-0.044	0.154

5 Component Dupont Table for 4 (AAPL, MSFT, AMZN & GOOGL)

4 of the Magnificent 7 Stocks Over 15 Years

5 Component Du-Pont
Table Chart for 4 (AAPL,
MSFT, AMZN & GOOGL)
of the Magnificent 7
Stocks over 15 Years - 1

Source : Zacks

Investment Research

Note : *Mkt. Cap is as on 061125

Ticker - AAPL. *Mkt., Cap - \$2.969 Trillion

2024	75.9%	92.5%	34.1%	1.1	5.1	137.9%
2023	85.3%	99.5%	29.8%	1.1	5.7	160.8%
2022	83.8%	99.7%	30.3%	1.1	5.7	160.9%
2021	86.7%	100.2%	29.8%	1.1	5.2	144.1%
2020	85.6%	101.2%	24.1%	0.8	4.3	75.2%
2019	84.1%	102.8%	24.6%	0.8	3.4	53.8%
2018	81.7%	102.8%	26.7%	0.7	3.0	48.7%
2017	75.4%	104.5%	26.8%	0.7	2.6	36.3%
2016	74.4%	102.3%	27.8%	0.7	2.4	35.6%
2015	73.6%	101.8%	30.5%	0.9	2.2	42.9%
2014	73.9%	101.9%	28.7%	0.8	1.8	32.8%
2013	73.8%	102.4%	28.7%	0.9	1.6	29.1%
2012	74.8%	100.9%	35.3%	1.0	1.5	39.5%
2011	75.8%	101.2%	31.2%	1.1	1.5	39.6%
2010	75.6%	100.8%	28.2%	1.0	1.5	33.8%

Tax Burden Interest Burden Operating Margin Asset Turnover Leverage RoE % Gaap

Ticker - AMZN. Mkt., Cap - \$2.263 Trillion

2024	86.4%	98.4%	10.9%	1.1	2.3	23.7%
2023	81.0%	104.9%	6.2%	1.2	2.8	17.2%
2022	45.9%	-26.6%	4.3%	1.2	3.1	-2.0%
2021	87.5%	153.3%	5.3%	1.3	3.1	28.0%
2020	88.2%	105.5%	5.9%	1.4	3.4	27.1%
2019	82.9%	96.2%	5.2%	1.4	3.6	21.1%
2018	89.5%	90.6%	5.3%	1.6	3.8	27.0%
2017	79.7%	114.9%	1.9%	1.7	4.3	12.5%
2016	60.9%	95.2%	3.0%	1.9	4.1	13.9%
2015	38.0%	70.9%	2.1%	1.9	4.6	4.9%
2014	217.1%	-51.6%	0.2%	2.1	4.0	-2.3%
2013	54.2%	75.2%	0.9%	2.3	3.6	3.0%
2012	-7.4%	79.0%	1.1%	2.5	3.2	-0.5%
2011	67.7%	111.7%	1.7%	2.4	2.6	8.3%
2010	77.0%	105.9%	4.1%	2.4	2.3	18.6%

Ticker - MSFT. Mkt., Cap - \$3.513 Trillion

2024	81.8%	98.4%	44.7%	0.5	2.0	36.0%
2023	81.0%	99.9%	42.2%	0.6	2.0	38.2%
2022	86.9%	105.3%	40.1%	0.6	2.2	45.4%
2021	86.2%	103.9%	40.7%	0.5	2.4	46.2%
2020	83.5%	100.2%	37.0%	0.5	2.6	39.5%
2019	89.8%	107.7%	32.2%	0.5	2.8	41.8%
2018	45.4%	74.8%	44.2%	0.4	3.1	20.1%
2017	85.2%	101.6%	30.5%	0.4	3.1	34.4%
2016	80.1%	92.7%	30.3%	0.5	2.4	27.3%
2015	65.9%	68.6%	28.8%	0.5	2.0	13.8%
2014	79.3%	99.3%	32.3%	0.6	1.8	25.7%
2013	80.8%	99.5%	34.9%	0.6	1.8	29.4%
2012	76.2%	78.4%	38.5%	0.6	1.8	26.3%
2011	82.5%	105.0%	38.2%	0.7	1.9	45.0%
2010	75.0%	103.8%	38.6%	0.7	1.9	42.3%

Tax Burden Interest Burden Operating Margin Asset Turnover Leverage RoE % Gaap

Ticker - GOOGL. Mkt., Cap - \$2.16 Trillion

2024	83.6%	106.6%	32.1%	0.8	1.4	32.5%
2023	86.1%	101.7%	27.4%	0.8	1.4	27.2%
2022	84.1%	95.3%	26.5%	0.8	1.4	23.5%
2021	83.8%	115.3%	30.6%	0.8	1.4	31.6%
2020	83.8%	116.6%	22.6%	0.6	1.4	19.0%
2019	86.7%	110.3%	22.2%	0.6	1.3	17.8%
2018	88.0%	115.6%	22.1%	0.6	1.3	18.3%
2017	46.6%	75.5%	32.5%	0.6	1.2	8.4%
2016	80.7%	101.8%	26.3%	0.6	1.2	14.9%
2015	83.2%	103.9%	25.2%	0.5	1.2	14.3%
2014	81.9%	100.5%	26.0%	0.5	1.3	14.5%
2013	80.1%	109.0%	25.8%	0.5	1.3	15.7%
2012	74.2%	106.7%	26.4%	0.6	1.3	16.1%
2011	83.1%	100.7%	32.3%	0.6	1.2	19.2%
2010	78.8%	104.0%	35.4%	0.6	1.2	20.2%

5 Component Dupont Table for 4 (META, NVDA, and TSLA)

3 Remaining of the Magnificent 7 Stocks Over 15 Years

5 Component Du-Pont Table Chart for 3 (META, NVDA & TSLA) of the Magnificent 7 Stocks over 15 Years - 2

Source : Zacks

Investment Research

Note : *Mkt. Cap is as on 061125

Ticker - META. Mkt., Cap - \$1.745 Trillion

2024	88.3%	101.9%	42.2%	0.7	1.5	38.2%
2023	82.4%	97.7%	36.0%	0.6	1.5	28.2%
2022	80.5%	89.5%	27.6%	0.7	1.4	18.6%
2021	83.3%	101.1%	39.6%	0.7	1.3	29.7%
2020	87.8%	101.5%	38.0%	0.6	1.3	25.2%
2019	74.5%	103.4%	33.9%	0.6	1.3	20.0%
2018	87.2%	101.8%	44.6%	0.6	1.1	27.5%
2017	77.4%	91.8%	55.2%	0.5	1.1	23.2%
2016	81.6%	102.2%	44.3%	0.5	1.1	19.4%
2015	59.5%	91.5%	37.7%	0.4	1.1	9.1%
2014	59.9%	94.1%	41.8%	0.5	1.1	12.7%
2013	54.4%	98.5%	35.5%	0.5	1.2	11.4%
2012	-3.0%	58.7%	16.5%	0.4	1.2	-0.1%
2011	49.8%	105.9%	43.1%	2.3	1.5	78.8%
2010	60.1%	97.7%	52.3%	2.6	1.9	156.7%

Tax Burden Interest Burden Operating Margin Asset Turnover Leverage RoE % Gaap

Ticker - TSLA. Mkt., Cap - \$1.051 Trillion

2024	79.3%	127.5%	7.2%	0.8	1.7	10.3%
2023	150.4%	334.0%	3.1%	1.0	1.7	27.5%
2022	91.7%	100.7%	16.7%	1.1	1.8	31.8%
2021	87.1%	99.1%	11.9%	0.9	2.1	20.4%
2020	59.8%	62.3%	5.9%	0.7	2.9	4.5%
2019	129.6%	425.0%	-0.6%	0.8	4.8	-13.1%
2018	97.1%	333.8%	-1.4%	0.8	5.4	-18.5%
2017	88.8%	170.6%	-11.0%	0.4	4.7	-34.1%
2016	90.4%	166.4%	-6.4%	0.5	4.8	-23.1%
2015	101.5%	272.9%	-7.9%	0.6	7.2	-90.2%
2014	103.3%	980.0%	-0.9%	0.6	5.6	-31.5%
2013	103.6%	1457.9%	-0.2%	1.1	3.8	-14.6%
2012	100.0%	100.9%	-95.0%	0.5	11.1	-506.5%
2011	100.2%	102.1%	-121.8%	0.3	2.4	-98.4%
2010	100.1%	108.7%	-121.5%	0.5	7.6	-526.8%

Ticker - NVDA. Mkt Cap., - \$3.483 Trillion

2025	86.7%	105.7%	60.9%	1.4	1.5	115.4%
2024	88.0%	101.8%	54.5%	1.1	1.7	92.8%
2023	104.5%	68.7%	22.6%	0.6	1.8	18.7%
2022	98.1%	99.4%	37.1%	0.7	1.7	43.2%
2021	98.3%	83.0%	31.9%	0.6	1.8	29.3%
2020	94.1%	103.0%	26.4%	0.7	1.4	25.7%
2019	106.3%	116.2%	28.6%	0.9	1.5	46.9%
2018	95.3%	103.7%	31.7%	1.0	1.5	47.0%
2017	87.5%	97.5%	28.3%	0.8	1.7	33.7%
2016	82.6%	88.4%	16.8%	0.7	1.6	13.9%
2015	83.6%	94.4%	17.1%	0.7	1.6	14.8%
2014	86.3%	101.9%	12.1%	0.7	1.4	9.9%
2013	85.0%	101.2%	15.3%	0.7	1.3	12.3%
2012	87.6%	98.7%	16.8%	0.8	1.3	15.2%
2011	93.4%	70.6%	10.8%	0.9	1.4	8.7%
2010	82.6%	2357.2%	-0.1%	1.0	1.4	-2.8%

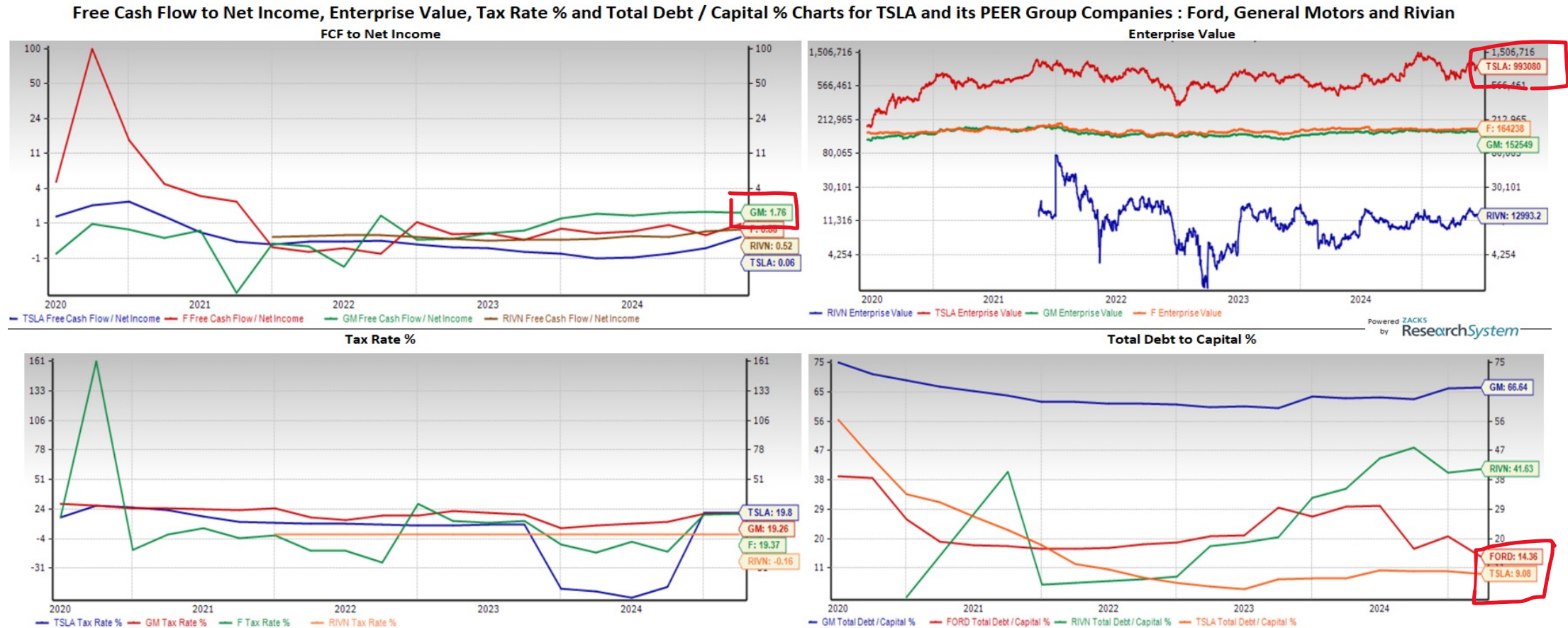
Tax Burden Interest Burden Operating Margin Asset Turnover Leverage RoE % Gaap

Ticker - AMD. Mkt., Cap - \$188.309 Billion

2024	82.5%	44.1%	17.5%	0.4	1.2	2.9%
2023	173.6%	18.1%	12.0%	0.3	1.2	1.5%
2022	111.5%	25.5%	19.7%	0.3	1.2	2.4%
2021	86.2%	101.7%	22.0%	1.5	1.6	44.9%
2020	195.3%	664.4%	2.0%	1.4	1.8	62.1%
2019	91.7%	43.3%	12.8%	1.3	2.5	15.7%
2018	102.1%	67.5%	7.6%	1.5	4.2	33.8%
2017	412.5%	-3.4%	4.5%	1.5	7.1	-6.8%
2016	110.9%	510.2%	-2.0%	1.3	-115.1	1732.2%
2015	102.2%	213.2%	-7.6%	1.2	-15.0	302.8%
2014	101.3%	-133.6%	5.4%	1.3	9.5	-93.0%
2013	112.2%	-71.8%	1.9%	1.3	9.3	-19.0%
2012	97.2%	-9361.5%	0.2%	1.2	5.0	-128.0%
2011	-49100.0%	-0.1%	11.3%	1.3	3.2	30.1%
2010	48.5%	353.1%	4.2%	1.3	6.2	59.3%
2009	75.0%	-60.0%	-12.6%	0.6	-64.8	-223.0%

Free Cash Flow to Net Income, Enterprise Value, Tax Rate % and Total Debt/Capital % Charts

For [TSLA](#) and its PEER Group Companies: Ford, General Motors, and Rivian



Return Analysis of Magnificent 7 Stocks Over the Past 10 Years

Four Different Time Periods Are Shown

Returns Analysis of Magnificent 7 Stocks over the past 10 Years

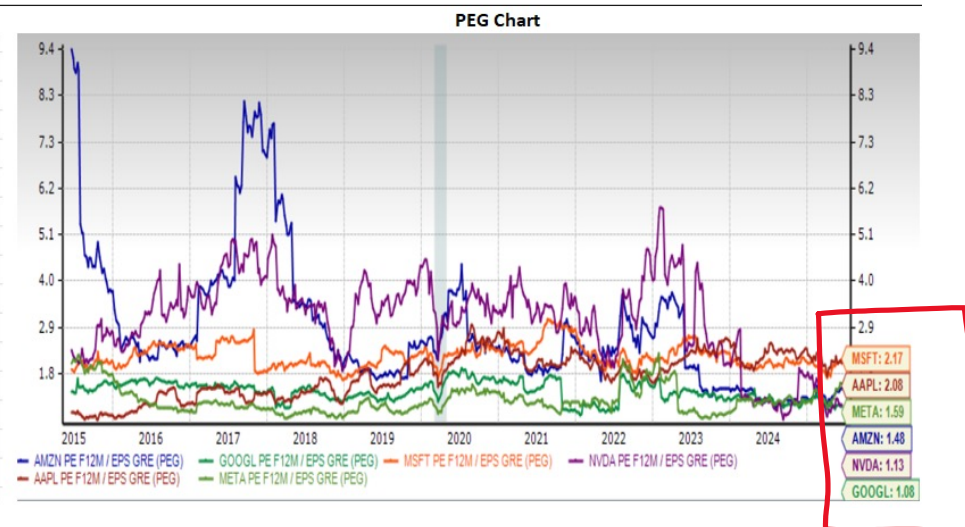
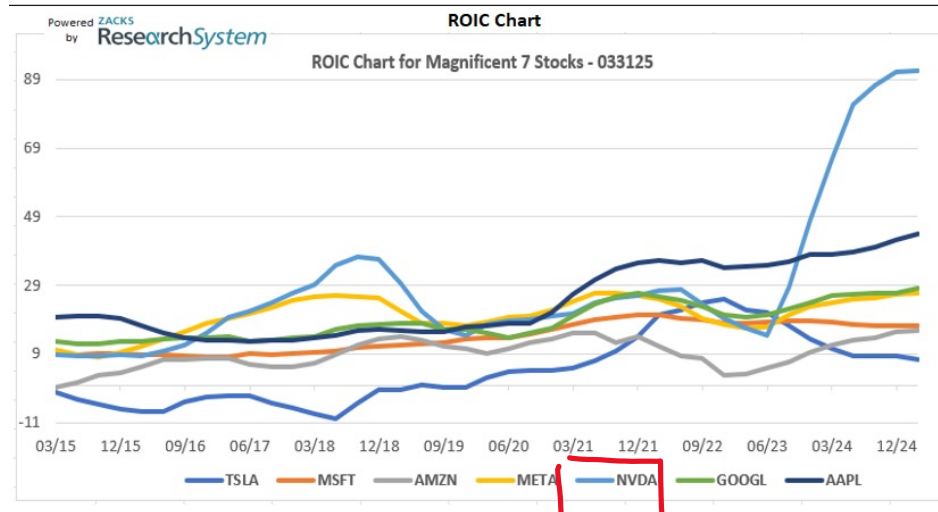
	From 05/31/24 to 05/31/25				From 05/31/21 to 05/31/24				From 05/31/18 to 05/31/21				From 05/31/15 to 05/31/18			
Tickers	Cumulative Return	Standard Deviation	Annualized Std. Deviation	Range	Cumulative Return	Standard Deviation	Annualized Std. Deviation	Range	Cumulative Return	Standard Deviation	Std. Deviation	Range	Cumulative Return	Standard Deviation	Std. Deviation	Range
AAPL	4.94	5.41	18.73	17.71	57.09	7.81	27.05	30.98	176.11	9.67	33.51	39.70	56.02	6.84	23.68	27.51
MSFT	11.75	6.46	22.37	23.08	70.57	6.94	24.02	28.56	162.35	5.28	18.29	22.04	120.90	5.55	19.24	28.64
GOOGL	0.02	7.85	27.20	28.70	46.38	7.88	27.30	33.13	114.26	6.77	23.47	29.14	126.68	6.60	22.86	28.96
META	39.20	9.27	32.10	31.61	42.16	13.51	46.79	59.40	71.41	9.38	32.50	40.49	142.84	5.84	20.23	23.82
TSLA	94.55	17.35	60.10	65.73	-14.55	18.14	62.86	80.39	997.92	22.85	79.14	96.57	47.10	10.22	35.41	42.14
NVDA	23.30	9.71	33.65	37.30	576.22	17.16	59.44	68.37	159.55	12.00	41.58	51.07	952.05	11.68	40.47	49.67
AMZN	16.19	7.64	26.48	22.22	9.75	9.93	34.39	50.81	97.78	8.75	30.32	47.11	295.27	8.07	27.94	37.22

Return Analysis of the Mag 7 Stocks

Over the last 10 years. *Supplemental info on ROIC and a PEG chart*

Returns Analysis of Magnificent 7 Stocks over the past 10 Years

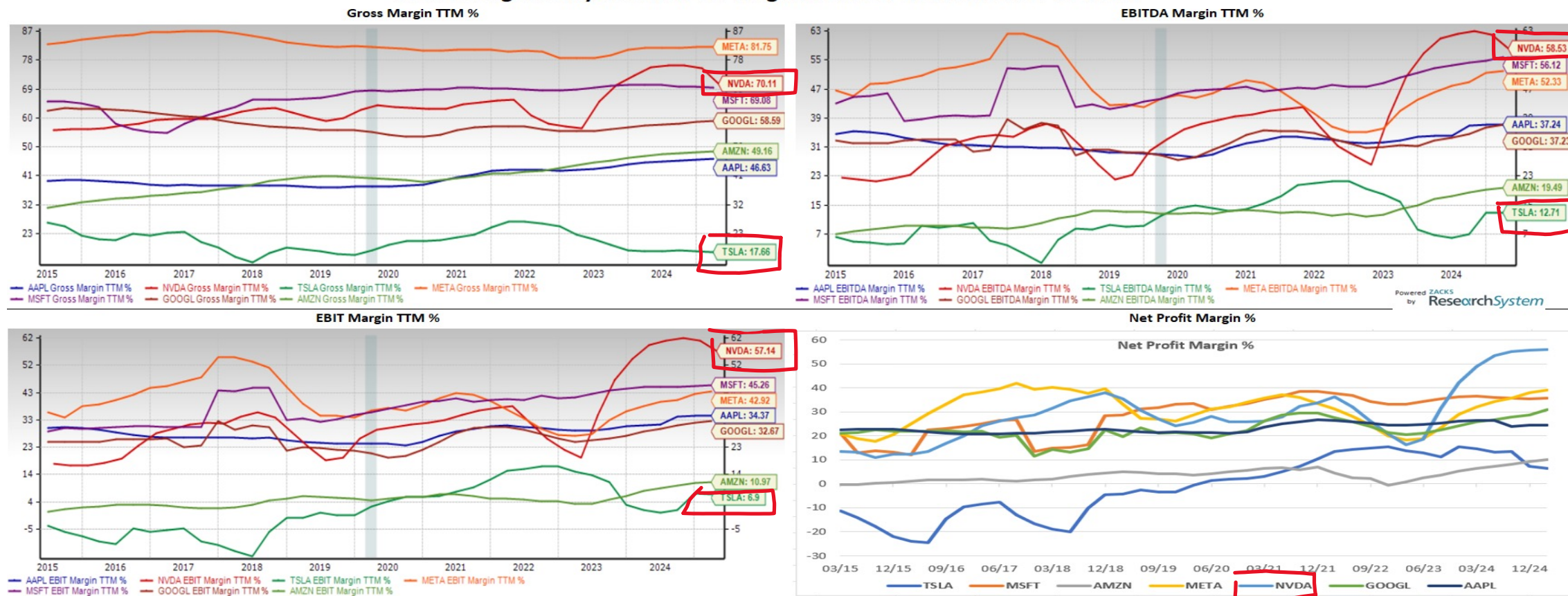
Tickers	From 05/31/24 to 05/31/25				From 05/31/21 to 05/31/24				From 05/31/18 to 05/31/21				From 05/31/15 to 05/31/18			
	Cumulative Return	Standard Deviation	Annualized Std. Deviation	Range	Cumulative Return	Standard Deviation	Annualized Std. Deviation	Range	Cumulative Return	Standard Deviation	Std. Deviation	Range	Cumulative Return	Standard Deviation	Std. Deviation	Range
AAPL	4.94	5.41	18.73	17.71	57.09	7.81	27.05	30.98	176.11	9.67	33.51	39.70	56.02	6.84	23.68	27.51
MSFT	11.75	6.46	22.37	23.08	70.57	6.94	24.02	28.56	162.35	5.28	18.29	22.04	120.90	5.55	19.24	28.64
GOOGL	0.02	7.85	27.20	28.70	46.38	7.88	27.30	33.13	114.26	6.77	23.47	29.14	126.68	6.60	22.86	28.96
META	39.20	9.27	32.10	31.61	42.16	13.51	46.79	59.40	71.41	9.38	32.50	40.49	142.84	5.84	20.23	23.82
TSLA	94.55	17.35	60.10	65.73	-14.55	18.14	62.86	80.39	997.92	22.85	79.14	96.57	47.10	10.22	35.41	42.14
NVDA	23.30	9.71	33.65	37.30	576.22	17.16	59.44	68.37	159.55	12.00	41.58	51.07	952.05	11.68	40.47	49.67
AMZN	16.19	7.64	26.48	22.22	9.75	9.93	34.39	50.81	97.78	8.75	30.32	47.11	295.27	8.07	27.94	37.22



Profit Margin Analysis Charts

For the Mag 7 Stocks Over 10 years....

Profit Margin Analysis Charts for Magnificent Seven Stocks over 10 Years



Thank You for Attending!

John Blank, PhD

Zacks Chief Equity Strategist and Economist
Zacks Professional Services

866-794-6065

strategycall@zackspro.com

www.zackspro.com



Zacks Professional Services



@ZATools