

Disclosures

The views of John Blank, PhD are not necessarily the views of Zacks Investment Research. Past performance is no guarantee of future results. Inherent in any investment is the potential for loss. This material is being provided for informational purposes only and nothing herein constitutes investment, legal, accounting or tax advice, or a recommendation to buy, sell or hold a security. No recommendation or advice is being given as to whether any investment is suitable for a particular investor. It should not be assumed that any investments in securities, companies, sectors or markets identified and described were or will be profitable. All information is current as of the date herein and is subject to change without notice. Any views or opinions expressed may not reflect those of the firm as a whole. Zacks Investment Research is not a licensed securities dealer, broker or US investment adviser or investment bank.

Semiconductor Stocks 2025

A Second Lesson from this Key Info Tech Sector

Part One: [Tables and Charts, Showing the Semiconductor Industries' Key Stocks](#)

Part Two: [Top Semiconductor Stocks Asset Allocation for Four Style Classes](#)

Presented by:

John Blank, PhD

Zacks Chief Equity Strategist and Economist

07/14/2025



This is useful information for traders and investors in these stocks

1. Tables and Charts on the Semiconductor Industry

Tables for Market Capitalization Classification (on the right) and a List of Semiconductor Stocks, Arranged by Market Cap, into Four Categories

Also, Expanded Forms & Description of Important Technical Terms/Semiconductor Jargon

Tables for Market Capitalization Classification (on the Right) and List of Semiconductor Stocks arranged by Market Capitalization into Four categories

Mega & Large Cap.,		Mid Cap.,		Small Cap.,		Micro Cap.,	
Tickers	Mkt, Cap (\$ Mil)	Tickers	Mkt, Cap (\$ Mil)	Tickers	Mkt, Cap (\$ Mil)	Tickers	Mkt, Cap (\$ Mil)
AVGO	1240634.5	DINRF	7686.3	HIMX	1623.2	VLN	248.8
TXN	186972.6	NVMI	7306.5	NVTS	1409.8	NA	232.8
QCOM	170969.6	LSCC	7033.5	AAOI	1293.6	ALMU	221.0
ARM	165679.5	RMBS	6691.8	MXL	1151.0	ATOM	157.8
AMAT	144594.1	ALGM	6020.4	AMSSY	1068.3	SVCO	141.9
LRCX	122322.0	CRUS	5474.6	LASR	889.4	MX	141.0
ADI	116608.4	AMKR	5178.3	AOSL	747.4	IQEPF	139.4
INTC	98363.1	ROHCY	4986.4	INDI	699.2	WOLF	97.7
MRVL	64968.7	SLAB	4823.2	ICHR	652.0	QUIK	93.6
NXPI	55201.9	TSEM	4726.7	CEVA	525.1	AXTI	92.1
IFNNY	54234.9	SMTTC	3782.5	SKYT	449.1	CODA	88.0
MCHP	37989.9	THKLY	3472.4	POET	364.6	GCTS	74.6
MPWR	34309.9	POWI	3150.0	LAES	360.7	ASYS	60.5
STM	27098.0	PI	3124.1	NVEC	346.1	SOTK	60.2

Market Capitalization Classification	
Mega Cap.,	Greater than \$200 Billion
Large Cap.,	Between \$10 Billion to \$200 Billion
Mid Cap.,	Between \$2 Billion to \$10 Billion
Small Cap.,	Between \$250 Million to \$2 Billion
Micro Cap.,	Less than \$250 Million

Source : Zacks Investment Research

Expanded Forms & Description of Important Technical Terms / Semiconductors Jargon

Acronym	Expanded Form	Brief Description
SoC	System on a Chip	An Integrated Circuit that combines a Processor, Memory, GPU, Modem, and other components on a Single Chip. Common in Smartphones, Tablets and Embedded Systems.
ASIC	Application-Specific Integrated Circuit	A Custom designed chip built for a Specific Use or Product, like a Bitcoin miner or a Networking Switch. Optimized for Performance, Power and Cost.
RF	Radio Frequency	Chips and Modules that process Wireless Signals. Used in Wi-Fi, Bluetooth, Cellular Networks (4G/5G), Radar and Satellite Communication.
GPU	Graphics Processing Unit	A specialized Processor designed to handle Complex Graphics rendering and Parallel computation tasks, widely used in Gaming, Data Centers and AI workloads.
AI	Artificial Intelligence	Refers to Chips and Processors Optimized for running AI Algorithms, such as Neural Networks, Speech recognition, and Computer vision. Often includes dedicated AI accelerators.
FPGA	Field-Programmable Gate Array	A Reprogrammable Semiconductor device that can be configured after manufacturing to perform specific Logic Functions. Used in Telecom, Defense and Industrial control.
HDBaseT	High-Definition Baseband Transmission	A connectivity standard used to transmit Ultra-High-Definition video, Audio, Ethernet, and power over a single cable (typically Cat5e/Cat6). Common in AV and Automotive Sectors.
AV	Audio-Visual	Chips or Systems that process Sound and Visual content, typically found in TVs, Infotainment systems, Video Conferencing and Automotive Entertainment.
AI/HPC	Artificial Intelligence / High-Performance Computing	Refers to chips designed for running extremely Large, Complex computations — common in Data Centers, Supercomputers, and training AI models. Often use GPUs or custom accelerators.

Table for Top Global (non-US) Semiconductor Companies

Overall Semi Revenue, Key Segments, Headquarters Location, and Market Cap in Local Currency

Table for Top Global (Non-U.S) Semiconductor Companies, Revenue from Semiconductors / Market Share, Key Product Segment and Head Quarter's and Market Capitalisation in Local Currency

Company	Overall Semiconductor Revenue (2024) / Market Revenue	Key Segment	Traded in US or NOT	Head Quarter's @	Market Capitalisation in Local Currency / USD
Taiwan Semiconductor Manufacturing Company - TSMC	67.6% of Global Foundry	Foundry	No	Hsinchu Science Park, Taiwan	6.597 Trillion Taiwan Dollars (NT\$)
Samsung Electronics	~\$66.5 B (~10.6% of Global Chip market); 7.7% Foundry Share	Memory + Foundry	No	Suwon, South Korea	413.16 Trillion South Korean Won
SK Hynix	~\$42.8 B (~6.8 %); #1 DRAM share (~36%)	Dynamic Random Access Memory/NOT AND memory	No	Icheon, South Korea	203.31 Trillion South Korean Won
Semiconductor Manufacturing Intl Corp - SMIC	6% foundry	Foundry (mature nodes)	No	Shanghai, China	58.1 Billion USD
United Micro-electronics Corp - UMC	4.7 % share	Foundry	Yes - Ticker UMC	Hsinchu City, Taiwan	548.72 Billion Taiwan Dollar (NT\$)
Toshiba/Kioxia		NAND (NOT AND) Flash Memory	No	Japan	1.34 Trillion Japanese Yen
Renaissance Semiconductor		Automotive Microcontroller Unit/Integrated Circuit's	No	Toyosu, Koto-ku, Tokyo, Japan	19.81 Billion Japanese Yen
Sony Semiconductor		Image sensors (#1 in CMOS)	No	Atsugi, Japan	22.18 Trillion Japanese Yen - Sony Corp.,
Rohm Co., Ltd.		Power & Analog Integrated Circuit's	No	Kyoto, Japan	747.56 Billion Japanese Yen
Tower Semiconductor	~0.9 % Foundry share	Analog/RF foundry	No	Migdal Haemek, Israel	5.18 Billion USD
Infineon Technologies	~€15 B (~2.6 %)	Automotive/Power Integrated Circuit's	No	Germany	49.64 Billion Euro
NXP Semiconductors N V		Automotive/Embedded Integrated Circuit's, Secure Controllers	Yes - Ticker NXPI	Eindhoven, Netherlands	49.46 Billion euro
ASML Holding N.V.		Photo Lithography		Eindhoven, Netherlands	267.73 Billion Euro
ST Microelectronics	Broad portfolio with ~€13-14 B revenue (est.)	Industrial/Analog Integrated Circuit's	Yes - Ticker STM	Plan-les-Ouates, near Geneva, Switzerland	25.21 Billion Euro
AMS-Osram	EUR 3.4 billion	Semiconductors and Lamps & Systems	No	Premstaetten/Graz (Austria)	1.20 Billion Euro
AIXTRON SE	EUR 633.2 million	Metal-Organic Chemical Vapor Deposition	No	Herzogenrath, Germany	1.80 Billion Euro
				Source : https://en.wikipedia.org/wiki/	Source : https://www.investopedia.com

Table for Top Semiconductor Stocks by Market Capitalization

And their presence in critical manufacturing processes, product and market segments, and corresponding market shares...

Table for Top Semiconductor Stocks by Market Cap, their Presence in Critical Manufacturing Process, Product and Market Segments and Corresponding Market Shares

Ticker	Mkt. Cap.,	Company	Design, Research & Development	Wafer Fabrication	Assembly & Testing	Market/ Product Segment	Estimated Market Share (2024)
AVGO	Mega	Broadcom	Fabless Design & R&D (*SoCs, ASICs, RF)	Outsources fabrication to TSMC, Global Foundries	Outsourced to third party Contractors	U.S. Semiconductor Server/Data-Center ASIC Chips	~15% (by revenue, Q1 2025) 70 - 80%
TXN	Large	Texas Instruments	In-house Design & R&D (Analog, Embedded)	Manufactures Wafers in own Fabs	Performs assembly and Testing In-house and via partners	Global Analog Semiconductor U.S Analog IC Market (IDM share) U.S Application-Specific Analog	~15–20% (largest single vendor) Part of 65.8% held by IDMs Major Contributor to 65.2% segment
QCOM	Large	Qualcomm Inc	Fabless Design & R&D (Snapdragon, Modems)	Fabrication Outsourced to TSMC, Samsung	Assembly and Testing Outsourced	Smartphone AP/SoC LTE Baseband Modems 5G Modem Chipsets Total U.S Semiconductor (QCT Segment)	~21% (Q4 global, U.S. similar) ~65% (global) Leading U.S. supplier ~4–6% of U.S. chip revenues
NVDA	Mega	NVIDIA Corp	Fabless Design & R&D (*GPUs, AI, SoCs)	Fabrication Outsourced to TSMC, Samsung	Assembly and Testing Outsourced	Discrete Desktop/AIB GPUs Data-Center AI GPUs Steam & Amazon U.S. Retail GPUs	~90–92% (late 2024–early 2025) ~92% (throughout 2024) 70–80% of unit and revenue share
DINRF	Mid	Screen Holdings	Designs Semiconductor Manufacturing Equipment	Manufactures Photo Lithography and Cleaning Tools	Assembles and Tests Semiconductor Tools	Semiconductor Production Equipment	~17% global market share
NVMI	Mid	Nova Ltd.	R&D (Metrology Tools)	Manufactures Metrology Tools in own facilities	Assembles and Tests Metrology Equipment	Advanced Metrology Equipment	Negligible
LSCC	Mid	Lattice Semiconductor	Fabless Design & R&D (FPGAs)	Fabrication Outsourced	Assembly and Testing Outsourced	Nexus and Avant FPGA platforms	~90% of FPGA Global market
HIMX	Small	Himax Technologies	Fabless Design (Display Drivers, Sensors)	Fabrication Outsourced	Assembly and Testing Outsourced	DDICs - Display Driver ICs, Timing & Touch Controllers, Ultra-Low Power Sensors	~50% of Global Touch and Display Driver market
NVTS	Small	Navitas Semiconductor	Fabless GaN IC Design	Fabrication Outsourced	Assembly and Testing Outsourced	GaN IC Power market	~30% of Global GaN market
AAOI	Small	Applied Optoelectronics	In-house Optoelectronic Design	Manufactures Wafers in own Fabs	Performs Assembly and Testing In-house	Optical Networking	Limited market share
KULR	Micro	KULR Technology	Materials R&D (Battery, Thermal and Packaging)	Does not perform Wafer Fabrication	Provides Packaging, Testing and Thermal solutions	Battery Safety, Cooling Tech and Heat Dissipation solutions	No major global share as yet
VLN	Micro	Valens Semiconductor	Fabless Design (HDBaseT, AV)	Fabrication Outsourced	Assembly and Testing Outsourced	Niche player in HDBaseT & MIPI	~15 - 17% (by US revenue, 2024) \$58Million Global Revenue
NA	Micro	Nano Labs Ltd.	Fabless Design & R&D (AI/HPC chips)	Fabrication Outsourced, likely via foundries	Assembly and Testing Outsourced	AI / Web 3 chips	~9% U.S Revenue share

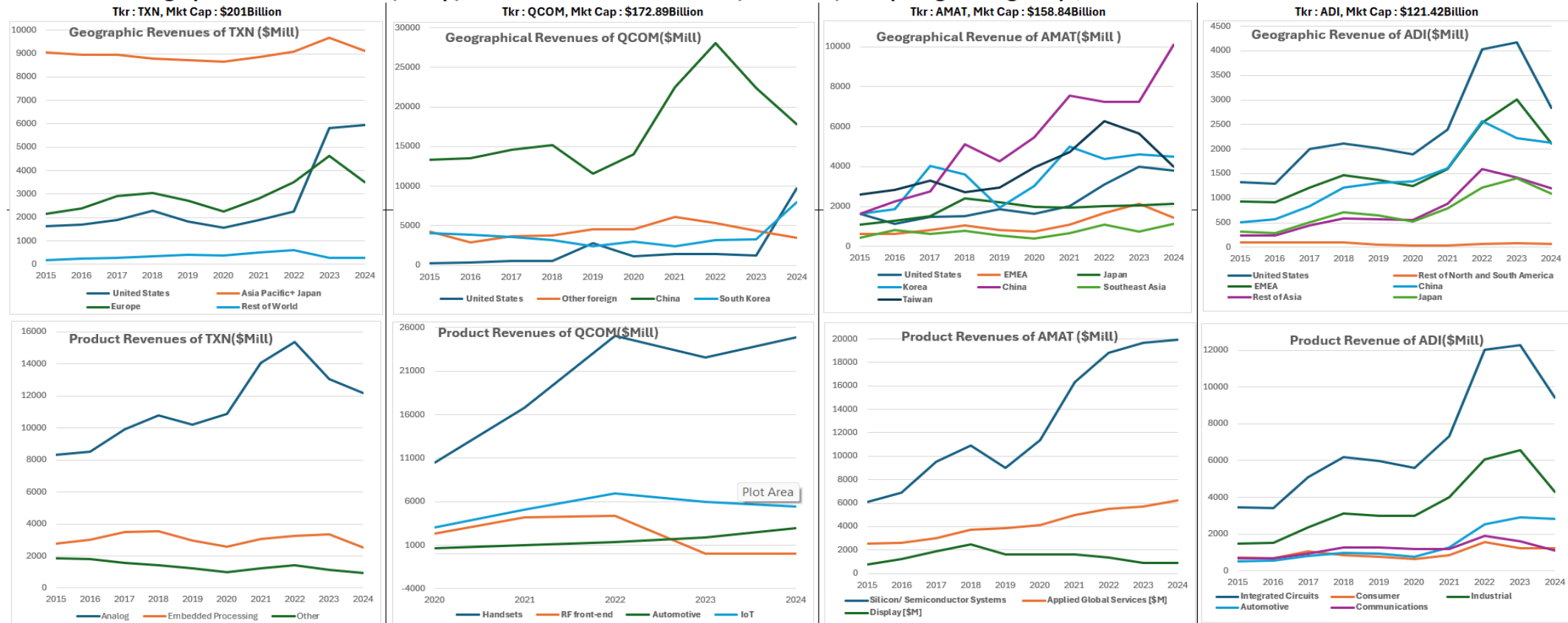
Source : en.wikipedia.org/wiki/Fabless_manufacturing

Source : www.investopedia.com/ask/answers/050615/what-are-fabless-chip-makers-and-why-are-they-important-semiconductor-market.asp

Geographic Revenue Charts (at Top) and Product Revenue Charts (at Bottom) - 1

Top Mega and Large Cap Semiconductor Stocks over 10 Years

Geographic Revenue Charts (at Top) and Product Revenue Charts (at bottom) of Top Mega & Large Cap., Semiconductor Stocks over 10 Years - 1

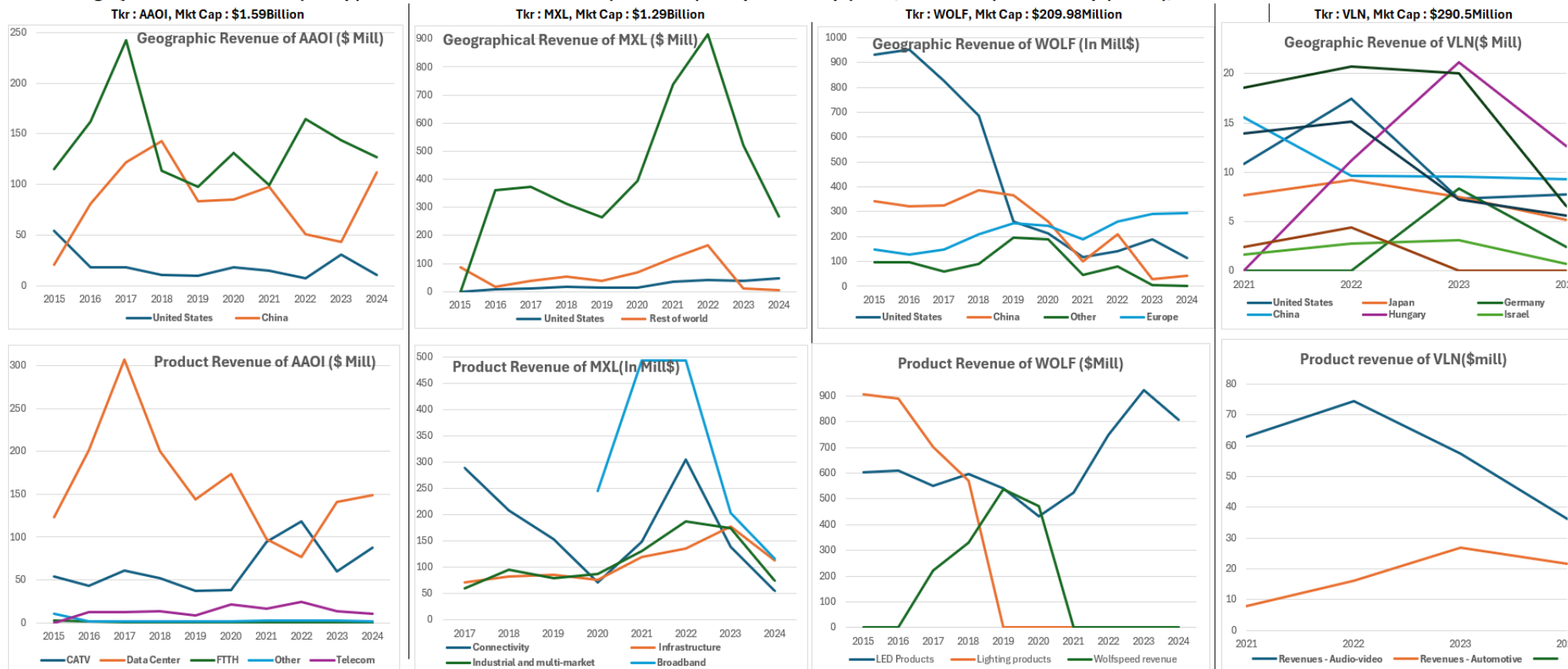


Source : Zacks Investment Research, Yahoofinance.com

Geographic Revenue Charts (at Top) and Product Revenue Charts (at Bottom) - 2

Top Small Cap & Micro Cap Semiconductor Stocks over 10 Years

Geographic Revenue Charts (at Top) and Product Revenue Charts (at bottom) of Top Small Cap (AAOI, MXL & VLN) & Micro Cap (WOLF), Semiconductor Stocks over 10 Years - 2



Source : Zacks Investment Research, Yahoofinance.com

What Tickers Look Good?

2. Top Semiconductor Stocks

Portfolio Asset Allocation
Done for Four Style Classes

Returns Analysis Table for Top Semiconductor Stocks Over 10 Years - 1

Top Mega and Large Cap Semi Stocks Over 10 Years...

Return Analysis Tables for Top Semiconductor Stocks over 10 Years - 1

Return Analysis Table for Top Mega and Large Cap Stocks over 10 Years

Tickers	*From 06/30/24 to 06/30/25				From 06/30/21 to 06/30/24				From 06/30/18 to 06/30/21				From 06/30/15 to 06/30/18			
	**Cumulative Return	Standard Deviation	Annualized Std. Deviation	Range	Cumulative Return	Standard Deviation	Annualized Std. Deviation	Range	Cumulative Return	Standard Deviation	Annualized Std. Deviation	Range	Cumulative Return	Standard Deviation	Annualized Std. Deviation	Range
NVDA	27.93	10.15	35.18	37.30	518.76	16.97	58.78	68.37	240.29	12.32	42.67	51.07	1104.91	11.44	39.63	49.67
AVGO	73.63	15.80	54.75	59.15	263.18	9.76	33.79	44.52	119.67	8.01	27.75	36.41	93.06	5.77	19.98	23.57
TXN	9.85	7.64	26.47	24.42	9.94	7.14	24.74	30.25	89.58	6.93	24.01	28.91	130.94	5.04	17.46	22.05
QCOM	-18.30	6.27	21.71	21.72	48.87	11.16	38.67	50.30	181.41	12.43	43.07	73.45	0.16	9.68	33.52	49.22
AMAT	-21.66	8.82	30.56	28.92	69.89	10.75	37.25	46.86	222.78	11.48	39.75	60.79	150.64	8.27	28.65	30.47
LRCX	-7.53	9.92	34.36	34.26	69.55	11.48	39.76	39.68	297.86	10.98	38.04	50.14	121.94	7.69	26.62	29.46
ADI	6.10	6.32	21.89	23.61	39.94	8.32	28.83	33.79	90.45	8.68	30.07	40.04	60.86	6.41	22.20	26.06
INTC	-27.26	13.35	46.25	50.03	-39.97	11.10	38.46	62.06	21.55	7.96	27.57	33.29	78.27	6.00	20.79	29.42
MRVL	11.08	16.34	56.60	61.54	21.43	14.66	50.80	74.56	179.68	10.11	35.01	40.76	71.19	8.74	30.28	42.99
NXPI	-17.24	6.45	22.34	26.22	38.10	10.97	38.00	45.76	95.23	10.87	37.64	46.79	11.27	7.78	26.96	36.38
IFNNY	16.36	8.16	28.26	28.17	-6.80	13.79	47.76	60.67	61.36	11.63	40.29	57.34	112.46	7.22	25.01	28.29
MCHP	-20.94	13.05	45.21	44.70	28.65	10.67	36.96	48.85	72.23	11.56	40.06	54.65	105.13	6.56	22.72	26.50
MPWR	-10.25	10.90	37.76	36.84	124.71	12.22	42.34	43.86	187.09	9.57	33.16	44.59	171.83	6.08	21.05	28.91
STM	-21.68	10.29	35.64	35.95	9.64	12.61	43.67	54.11	68.70	11.13	38.56	51.65	193.90	9.17	31.77	37.01

Note : * From and to Month-ends refer to In-between periods. **All #s are in %

Return Analysis Table for Top Mid Cap Stocks over 10 Years

Tickers	*From 06/30/24 to 06/30/25				From 06/30/21 to 06/30/24				From 06/30/18 to 06/30/21				From 06/30/15 to 06/30/18			
	**Cumulative Return	Standard Deviation	Annualized Std. Deviation	Range	Cumulative Return	Standard Deviation	Annualized Std. Deviation	Range	Cumulative Return	Standard Deviation	Annualized Std. Deviation	Range	Cumulative Return	Standard Deviation	Annualized Std. Deviation	Range
NVMI	17.34	14.29	49.49	51.76	127.94	12.95	44.87	54.67	277.58	8.68	30.08	38.76	118.00	8.67	30.03	34.46
LSCC	-15.52	9.21	31.91	27.92	3.22	16.51	57.20	85.42	756.41	13.61	47.14	76.16	11.37	12.52	43.36	62.22
RMBS	8.95	12.73	44.11	33.96	147.83	13.37	46.30	66.14	89.08	10.41	36.06	44.62	-13.46	7.40	25.62	31.09
CRUS	-18.33	7.09	24.55	26.40	49.98	10.87	37.66	51.07	122.07	11.12	38.52	48.30	12.64	7.80	27.01	35.94
AMKR	-45.96	9.86	34.17	35.33	74.28	14.41	49.93	53.94	177.21	16.26	56.31	82.66	43.64	15.63	54.16	70.93
SLAB	33.20	11.82	40.93	42.02	-27.81	13.30	46.07	55.13	53.87	9.77	33.83	48.38	84.41	8.05	27.88	37.00
TSEM	10.28	9.08	31.45	28.41	33.57	10.45	36.21	57.72	33.71	11.35	39.33	52.63	42.55	9.89	34.26	34.88
SMTC	51.07	22.39	77.56	87.89	-56.57	18.30	63.38	82.64	46.23	12.81	44.38	51.99	137.03	9.25	32.04	40.21
POWI	-19.25	7.48	25.92	29.35	-12.18	11.03	38.23	36.56	130.19	9.22	31.94	40.38	66.19	6.73	23.33	34.22
PI	-29.15	15.61	54.06	53.23	203.88	18.31	63.41	79.67	133.33	22.71	78.67	120.35	20.10	24.73	85.65	107.03

Note : * From and to Month-ends refer to In-between periods. **All #s are in %

Source : Zacks Investment Research

Return Analysis Tables for Top Semiconductor Stocks Over 10 Years - 2

Return Analysis Table for Top Small Cap Stocks Over 10 Years

Return Analysis Tables for Top Semiconductor Stocks over 10 Years - 2

Return Analysis Table for Top Small Cap Stocks over 10 Years

	*From 06/30/24 to 06/30/25				From 06/30/21 to 06/30/24				From 06/30/18 to 06/30/21				From 06/30/15 to 06/30/18			
Tickers	**Cumulative Return	Standard Deviation	Annualized Std. Deviation	Range	Cumulative Return	Standard Deviation	Annualized Std. Deviation	Range	Cumulative Return	Standard Deviation	Annualized Std. Deviation	Range	Cumulative Return	Standard Deviation	Annualized Std. Deviation	Range
HIMX	17.00	19.57	67.80	75.97	-38.47	17.73	61.43	92.72	129.93	24.19	83.80	127.90	-3.23	17.60	60.97	60.33
AAOI	209.89	51.21	177.40	193.67	-2.12	40.04	138.71	203.07	-81.14	18.75	64.96	81.61	158.64	23.78	82.37	97.13
MXL	-29.44	18.79	65.10	60.52	-52.60	16.05	55.58	59.60	172.55	15.15	52.48	65.82	28.84	12.83	44.45	52.44
AOSL	-31.33	15.97	55.33	49.77	22.97	17.35	60.09	67.40	113.41	22.40	77.58	128.54	62.93	10.89	37.74	58.19
ICHR	-49.05	14.58	50.51	47.27	-28.35	13.19	45.70	50.34	153.54	16.48	57.09	70.89	96.12	17.07	59.15	61.75
CEVA	13.95	15.59	54.00	55.87	-59.22	11.23	38.90	50.86	56.62	11.34	39.27	48.27	55.43	9.66	33.48	42.32
NVEC	3.85	10.97	37.99	36.18	20.16	10.97	38.00	52.75	-27.63	9.71	33.62	38.31	85.29	10.39	36.01	54.48

Note : * From and to Month-ends refer to In-between periods. **All #s are in %

Return Analysis Table for Top Micro Cap Stocks over 10 Years

	*From 06/30/24 to 06/30/25				From 06/30/21 to 06/30/24				From 06/30/18 to 06/30/21				From 06/30/15 to 06/30/18			
Tickers	**Cumulative Return	Standard Deviation	Annualized Std. Deviation	Range	Cumulative Return	Standard Deviation	Annualized Std. Deviation	Range	Cumulative Return	Standard Deviation	Annualized Std. Deviation	Range	Cumulative Return	Standard Deviation	Annualized Std. Deviation	Range
ATOM	32.28	38.61	133.74	120.69	-82.23	16.68	57.79	69.54	250.33	28.79	99.75	110.58	-34.47	14.40	49.88	53.88
MX	-18.27	10.36	35.90	39.42	-79.59	10.37	35.93	41.47	132.78	13.40	46.43	51.61	32.77	16.36	56.67	70.37
IQEPF	-65.13	23.54	81.55	81.51	-29.02	22.36	77.45	101.51	-57.30	38.20	132.33	227.53	282.35	15.71	54.42	62.48
WOLF	-98.25	30.66	106.22	103.70	-76.76	18.54	64.23	77.11	135.58	13.89	48.11	73.08	59.70	10.83	37.52	44.78
QUIK	-40.71	20.62	71.42	75.44	43.71	16.89	58.52	79.99	-55.11	32.09	111.16	174.28	-27.67	17.34	60.08	92.52
AXTI	-38.17	16.75	58.02	65.61	-69.22	22.32	77.30	109.03	55.74	20.87	72.30	102.27	179.76	14.19	49.16	57.83
CODA	35.77	11.97	41.48	40.03	-30.35	11.02	38.16	55.02	126.44	19.59	67.85	99.69	220.87	21.53	74.58	111.77
ASYS	-24.23	11.01	38.15	44.80	-39.21	19.41	67.24	88.24	59.34	13.66	47.31	65.55	-41.77	19.94	69.07	80.92
SOTK	-3.04	7.40	25.65	27.27	10.57	14.91	51.63	70.69	84.21	10.08	34.91	50.88	69.64	8.39	29.05	41.70
SQNS	16.95	30.02	103.98	115.39	-91.65	24.49	84.84	136.43	-26.22	17.59	60.93	79.99	19.30	20.98	72.67	119.50

Note : * From and to Month-ends refer to In-between periods. **All #s are in %

Stock Characteristics, Portfolio Return Metrics & Asset Allocation - 1

Semiconductor Large Cap 7 Stocks from 07/31/17 to 06/30/25

Stock Characteristics, Portfolio Rt. Metrics & Asset Allocation - Semiconductor Large Cap 7 Stocks from 07/31/17 to 06/30/25

Metrics for Semiconductor Large Cap 7 Stocks							
	AVGO	MPWR	LRCX	AMAT	MRVL	QCOM	ADI
Average in %	3.30	2.77	2.73	2.21	2.47	1.94	1.63
Cumulative Returns in %	1379.58	709.69	673.04	385.04	394.01	261.61	255.92
CAGR of Returns in %	40.04	29.88	29.13	21.82	22.10	17.43	17.20
Standard Error	1.01	1.08	1.11	1.09	1.31	1.16	0.81
Standard Dev., in %	9.88	10.58	10.92	10.67	12.81	11.40	7.91
Annualised Std., Dev., in %	34.23	36.63	37.83	36.97	44.36	39.49	27.41
Range in %	64.37	49.46	50.30	62.06	81.10	73.45	40.04
Skewness	0.74	-0.47	0.11	0.31	0.33	1.22	0.23
Kurtosis	2.46	0.02	-0.54	0.67	1.23	3.29	0.22

Note : Period from 07/31/17 to 06/30/25

Variance - CoVariance Matrix							
	AVGO	MPWR	LRCX	AMAT	MRVL	QCOM	ADI
AVGO	0.00966						
MPWR	0.00474	0.01107					
LRCX	0.00521	0.00638	0.01180				
AMAT	0.00543	0.00604	0.01025	0.01127			
MRVL	0.00775	0.00591	0.00722	0.00780	0.01623		
QCOM	0.00365	0.00545	0.00605	0.00525	0.00708	0.01286	
ADI	0.00362	0.00517	0.00543	0.00569	0.00522	0.00413	0.00620

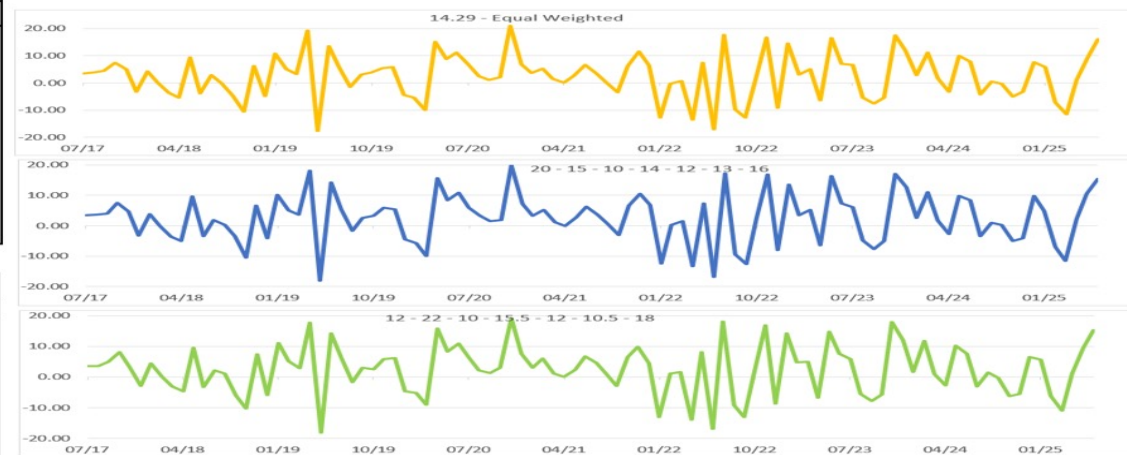
Note : Period from 07/31/17 to 06/30/25

Correlation Matrix							
	AVGO	MPWR	LRCX	AMAT	MRVL	QCOM	ADI
AVGO	1.00						
MPWR	0.46	1.00					
LRCX	0.49	0.56	1.00				
AMAT	0.52	0.54	0.89	1.00			
MRVL	0.62	0.44	0.52	0.58	1.00		
QCOM	0.33	0.46	0.49	0.44	0.49	1.00	
ADI	0.47	0.62	0.63	0.68	0.52	0.46	1.00

Source : Zacks
Investment Research

Table 3		Weights Assigned to each of the 7 Stocks in %						
		AVGO	MPWR	LRCX	AMAT	MRVL	QCOM	ADI
Portfolio 1 - Equal Weights		14.29	14.29	14.29	14.29	14.29	14.29	14.29
Portfolio 2		20.00	15.00	10.00	14.00	12.00	13.00	16.00
Portfolio 3		12.00	22.00	10.00	15.50	12.00	10.50	18.00

Monthly Portfolio Return charts for 3 Portfolios formed by assigning weights as in Table 3



Portfolio Metrics : Portfolios formed by assigning Weights for Semiconductor Large Cap 7 Stocks from 07/31/17 to 06/30/25

Portfolio Metrics	Weights in %		
	14.29 - Equal Weighted	20 - 15 - 10 - 14 - 12 - 13 - 16	12 - 22 - 10 - 15.5 - 12 - 10.5 - 18
Average in %	2.44	2.47	2.41
Cumulative Returns in %	639.31	670.82	628.89
CAGR of Returns in %	28.41	29.08	28.18
Standard Error	0.83	1.83	2.83
Standard Dev., in %	8.16	7.99	8.07
Annualised Std., Dev., in %	28.26	27.68	27.94
Range in %	38.63	37.91	37.22
Skewness	-0.13	-0.18	-0.19
Kurtosis	-0.10	-0.09	-0.14

Note : Period from 07/31/17 to 06/30/25

Stock Characteristics, Portfolio Return Metrics & Asset Allocation - 2

Semiconductor Mid Cap Stocks from 07/31/17 to 06/30/25

Stock Characteristics, Portfolio Rt. Metrics & Asset Allocation - Semiconductor Mid Cap 7 Stocks from 07/31/17 to 06/30/25

Metrics for Semiconductor Mid Cap 7 Stocks							
	NVMI	LSCC	RMBS	AMKR	PI	SLAB	TSEM
Average in %	3.28	3.08	2.45	1.86	2.86	1.43	1.17
Cumulative Returns in %	1145.83	635.58	460.12	129.54	120.04	115.60	81.76
CAGR of Returns in %	37.07	28.33	24.03	10.95	10.36	10.08	7.75
Standard Error	1.15	1.46	1.19	1.49	2.11	1.16	1.08
Standard Dev., in %	11.24	14.27	11.56	14.52	20.57	11.33	10.51
Annualised Std., Dev., in %	38.95	49.42	40.05	50.30	71.27	39.26	36.41
Range in %	58.36	86.57	66.14	82.66	120.35	55.13	64.28
Skewness	0.16	0.44	0.50	0.76	0.59	0.46	0.13
Kurtosis	-0.06	1.69	0.77	0.99	1.35	0.32	0.86

Note : Period from 07/31/17 to 06/30/25

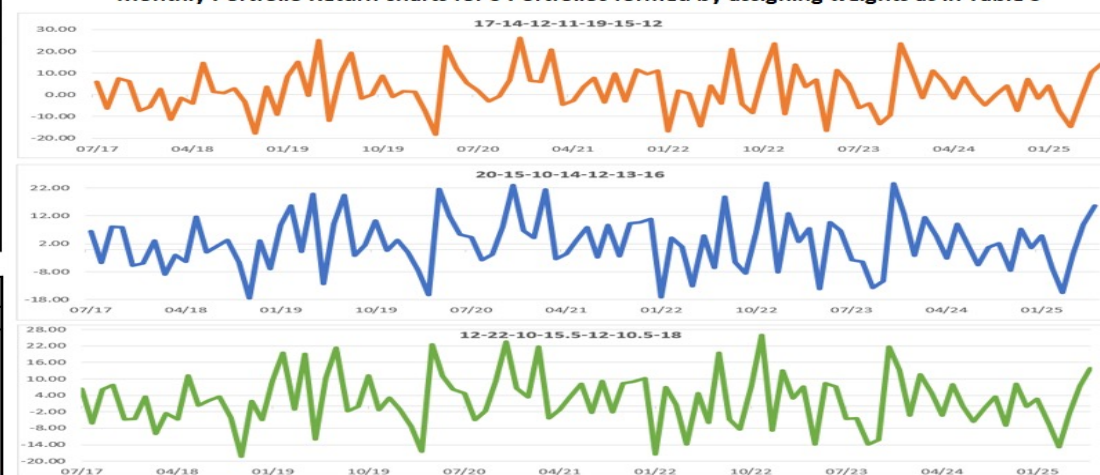
Variance - CoVariance Matrix							
	NVMI	LSCC	RMBS	AMKR	PI	SLAB	TSEM
NVMI	0.01264						
LSCC	0.00732	0.02035					
RMBS	0.00710	0.00652	0.01337				
AMKR	0.01015	0.01034	0.00900	0.02108			
PI	0.00730	0.00865	0.00903	0.01319	0.04233		
SLAB	0.00768	0.00931	0.00537	0.00791	0.00865	0.01285	
TSEM	0.00529	0.00647	0.00424	0.00715	0.00626	0.00560	0.01105

Note : Period from 07/31/17 to 06/30/25

Correlation Matrix							
	NVMI	LSCC	RMBS	AMKR	PI	SLAB	TSEM
NVMI	1.00						
LSCC	0.46	1.00					
RMBS	0.55	0.40	1.00				
AMKR	0.62	0.50	0.54	1.00			
PI	0.32	0.29	0.38	0.44	1.00		
SLAB	0.60	0.58	0.41	0.48	0.37	1.00	
TSEM	0.45	0.43	0.35	0.47	0.29	0.47	1.00

Weights Assigned to each of the 7 Stocks in %							
	NVMI	LSCC	RMBS	AMKR	PI	SLAB	TSEM
Portfolio 1	17.00	14.00	12.00	11.00	19.00	15.00	12.00
Portfolio 2	20.00	15.00	10.00	14.00	12.00	13.00	16.00
Portfolio 3	12.00	22.00	10.00	15.50	12.00	10.50	18.00

Monthly Portfolio Return charts for 3 Portfolios formed by assigning weights as in Table 3



Portfolio Metrics : Portfolios formed by assigning Weights for Semiconductor Mid Cap 7 Stocks from 07/31/17 to 06/30/25

Portfolio Metrics	Weights in %		
	17-14-12-11-19-15-12	20-15-10-14-12-13-16	12-22-10-15.5-12-10.5-18
Average in %	2.38	2.34	2.31
Cumulative Returns in %	512.56	504.75	479.39
CAGR of Returns in %	25.43	25.23	24.56
Standard Error	1.02	0.98	1.00
Standard Dev., in %	9.92	9.57	9.74
Annualised Std., Dev., in %	34.36	33.14	33.73
Range in %	44.29	41.31	44.40
Skewness	0.22	0.17	0.22
Kurtosis	-0.10	-0.22	-0.15

Note : Period from 07/31/17 to 06/30/25

Source : Zacks
Investment Research

Stock Characteristics, Portfolio Return Metrics & Asset Allocation - 3

Semiconductor Small Cap Stocks from 07/31/17 to 06/30/25

Stock Characteristics, Portfolio Rt. Metrics & Asset Allocation - Semiconductor Small Cap Stocks from 07/31/17 to 06/30/25

Metrics for Semiconductor Small Cap 7 Stocks							
	HIMX	ICHR	CEVA	MXL	AAOI	AOSL	NVEC
Average in %	2.37	1.11	-0.07	0.53	3.39	2.02	0.98
Cumulative Returns in %	54.78	-2.58	-51.64	-49.05	-58.42	53.93	49.43
CAGR of Returns in %	5.61	-0.33	-8.68	-8.08	-10.39	5.54	5.15
Standard Error	2.12	1.55	1.21	1.61	3.57	1.90	1.10
Standard Dev., in %	20.64	15.15	11.76	15.66	34.76	18.52	10.74
Annualised Std., Dev., in %	71.51	52.49	40.74	54.25	120.40	64.17	37.20
Range in %	127.90	70.89	57.90	72.99	208.85	128.54	57.88
Skewness	1.16	0.22	0.44	0.13	2.54	1.20	0.49
Kurtosis	2.54	-0.72	0.51	-0.57	8.97	4.16	0.62

Note : Period from 07/31/17 to 06/30/25

Variance - CoVariance Matrix							
	HIMX	ICHR	CEVA	MXL	AAOI	AOSL	NVEC
HIMX	0.04261						
ICHR	0.01291	0.02296					
CEVA	0.00602	0.00888	0.01383				
MXL	0.01332	0.01202	0.00812	0.02453			
AAOI	0.00672	0.02117	0.01430	0.01540	0.12080		
AOSL	0.01709	0.01564	0.00899	0.01511	0.01888	0.03431	
NVEC	0.00633	0.00688	0.00439	0.00603	0.01217	0.00797	0.01153

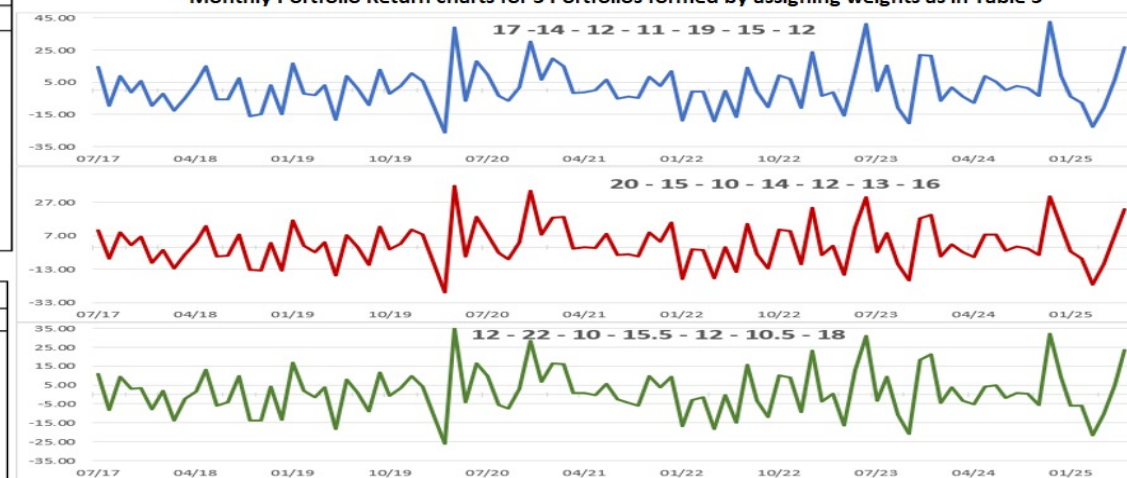
Note : Period from 07/31/17 to 06/30/25

Correlation Matrix							
	HIMX	ICHR	CEVA	MXL	AAOI	AOSL	NVEC
HIMX	1.00						
ICHR	0.41	1.00					
CEVA	0.25	0.50	1.00				
MXL	0.41	0.51	0.44	1.00			
AAOI	0.09	0.40	0.35	0.28	1.00		
AOSL	0.45	0.56	0.41	0.52	0.29	1.00	
NVEC	0.29	0.42	0.35	0.36	0.33	0.40	1.00

Source : Zacks
Investment Research

Weights Assigned to each of the 7 Stocks in %							
Table 3	HIMX	ICHR	CEVA	MXL	AAOI	AOSL	NVEC
Portfolio 1 - Equal Weights	17.00	14.00	12.00	11.00	19.00	15.00	12.00
Portfolio 2	20.00	15.00	10.00	14.00	12.00	13.00	16.00
Portfolio 3	12.00	22.00	10.00	15.50	12.00	10.50	18.00

Monthly Portfolio Return charts for 3 Portfolios formed by assigning weights as in Table 3



Portfolio Metrics : Portfolios formed by assigning Weights for Semiconductor Small Cap 7 Stocks from 07/31/17 to 06/30/25

Portfolio Metrics	Weights in %		
	17 -14 -12 -11 -19 -15 -12	20 -15 -10 -14 -12 -13 -16	12 -22 -10 -15.5 -12 -10.5 -18
Average in %	1.67	1.53	1.40
Cumulative Returns in %	122.69	116.48	94.98
CAGR of Returns in %	10.53	10.14	8.71
Standard Error	1.36	1.26	1.23
Standard Dev., in %	13.27	12.24	12.00
Annualised Std., Dev., in %	45.98	42.39	41.57
Range in %	68.47	63.67	61.11
Skewness	0.72	0.45	0.42
Kurtosis	1.04	0.41	0.37

Note : Period from 07/31/17 to 06/30/25

Stock Characteristics, Portfolio Return Metrics & Asset Allocation - 4

Semiconductor MicroCap Stocks from 07/31/17 to 06/30/25

Stock Characteristics, Portfolio Rt. Metrics & Asset Allocation - Semiconductor Micro Cap 7 Stocks from 07/31/17 to 06/30/25

Metrics for Semiconductor Micro Cap 7 Stocks							
	SOTK	CODA	ATOM	ASYS	MX	AXTI	QUIK
Average in %	1.93	1.78	3.01	0.85	-0.16	0.71	1.14
Cumulative Returns in %	229.14	94.76	18.29	-47.39	-59.39	-67.09	-69.87
CAGR of Returns in %	16.06	8.69	2.12	-7.71	-10.65	-12.97	-13.93
Standard Error	1.23	1.55	2.62	1.75	1.29	2.11	2.46
Standard Dev., in %	11.95	15.15	25.55	17.09	12.53	20.52	23.98
Annualised Std., Dev., in %	41.40	52.46	88.49	59.19	43.39	71.07	83.07
Range in %	70.69	99.69	120.69	88.24	58.71	109.03	174.28
Skewness	0.75	0.84	1.15	0.02	0.47	1.39	2.11
Kurtosis	1.50	2.57	1.38	0.54	0.00	2.80	8.62

Note : Period from 07/31/17 to 06/30/25

Variance - CoVariance Matrix							
	SOTK	CODA	ATOM	ASYS	MX	AXTI	QUIK
SOTK	0.01428						
CODA	0.00153	0.02294					
ATOM	-0.00294	-0.00018	0.06526				
ASYS	-0.00276	0.00672	0.00300	0.02919			
MX	-0.00069	0.00420	0.00629	0.00427	0.01569		
AXTI	-0.00219	0.00729	0.01070	0.01373	0.00760	0.04210	
QUIK	-0.00235	0.00444	0.01824	0.00881	0.00502	0.01993	0.05750

Note : Period from 07/31/17 to 06/30/25

Correlation Matrix							
	SOTK	CODA	ATOM	ASYS	MX	AXTI	QUIK
SOTK	1.00						
CODA	0.08	1.00					
ATOM	-0.10	0.00	1.00				
ASYS	-0.13	0.26	0.07	1.00			
MX	-0.05	0.22	0.20	0.20	1.00		
AXTI	-0.09	0.23	0.20	0.39	0.30	1.00	
QUIK	-0.08	0.12	0.30	0.21	0.17	0.41	1.00

Weights Assigned to each of the 7 Stocks in %							
	SOTK	CODA	ATOM	ASYS	MX	AXTI	QUIK
Portfolio 1	17.00	14.00	12.00	11.00	19.00	15.00	12.00
Portfolio 2	20.00	15.00	10.00	14.00	12.00	13.00	16.00
Portfolio 3	12.00	22.00	10.00	15.50	12.00	10.50	18.00

Source : Zacks
Investment Research

Monthly Portfolio Return charts for 3 Portfolios formed by assigning weights as in Table 3



Portfolio Metrics : Portfolios formed by assigning Weights for Semiconductor Micro Cap 7 Stocks from 07/31/17 to 06/30/25

Portfolio Metrics	Weights in %		
	17-14-12-11-19-15-12	20-15-10-14-12-13-16	12-22-10-15.5-12-10.5-18
Average in %	1.24	1.33	1.31
Cumulative Returns in %	121.16	139.55	125.63
CAGR of Returns in %	10.43	11.54	10.71
Standard Error	0.95	0.95	1.01
Standard Dev., in %	9.22	9.25	9.85
Annualised Std., Dev., in %	31.93	32.06	34.12
Range in %	45.22	51.01	56.85
Skewness	0.46	0.63	0.75
Kurtosis	0.01	0.74	1.30

Note : Period from 07/31/17 to 06/30/25

Thank You for Attending!

John Blank, PhD

Zacks Chief Equity Strategist and Economist

Zacks Professional Services

866-794-6065

strategycall@zackspro.com

www.zackspro.com



Zacks Professional Services



@ZATools